



Trafi

Finnish Transport Safety Agency

Why does speed matter so much for vulnerable road users?

iSAFER Talk, 19 September 2016

*Responsible traffic.
Courage and co-operation.*

Driver approaching an unexpected obstacle



Higher speed

- more difficult to detect
- longer distance travelled during reaction time

Higher speed

- longer braking distance
- loss of control more likely

Higher speed

- more serious consequences

Detection and peripheral vision



16 – 25 km/h

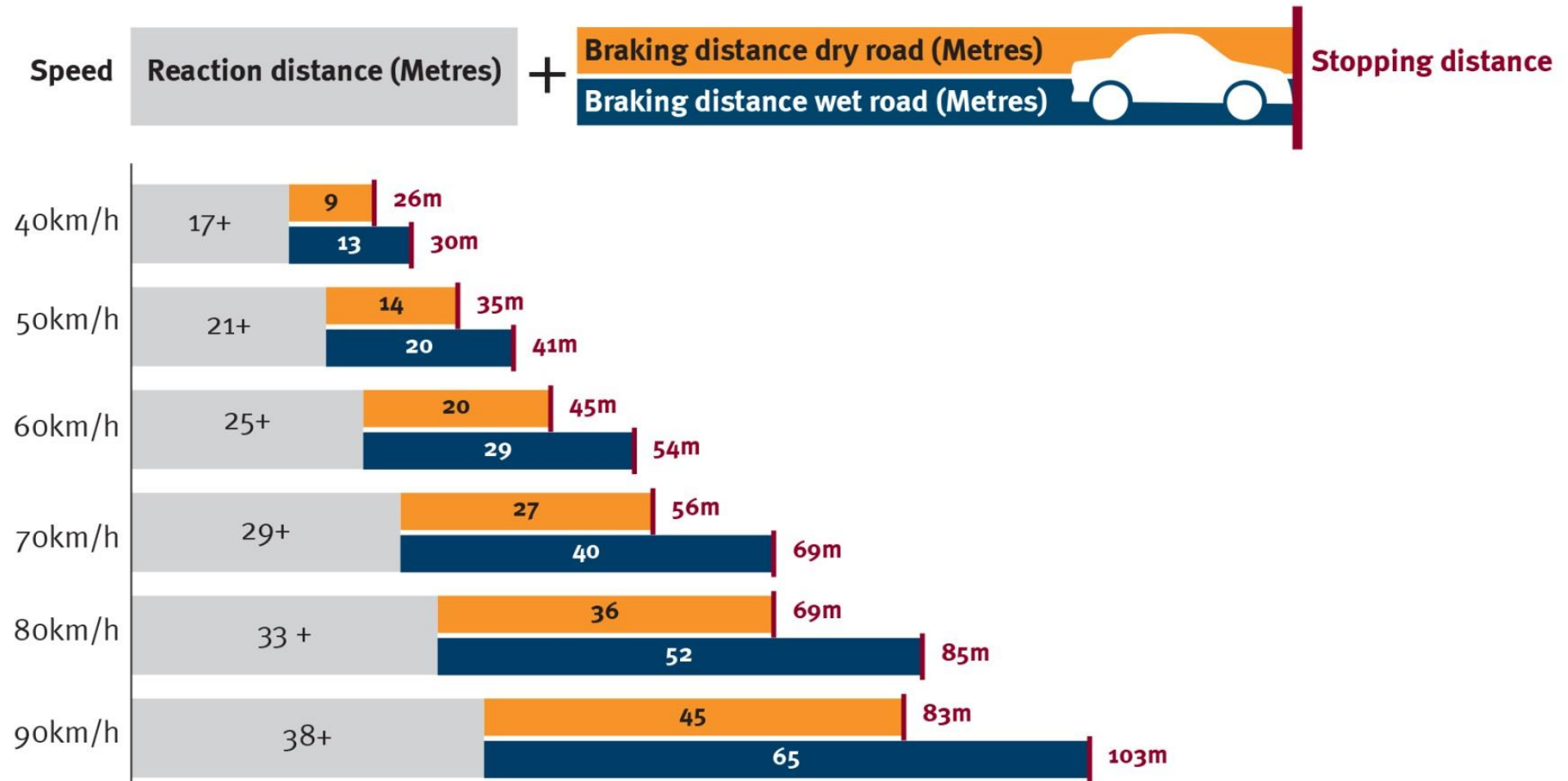


48 – 56 km/h

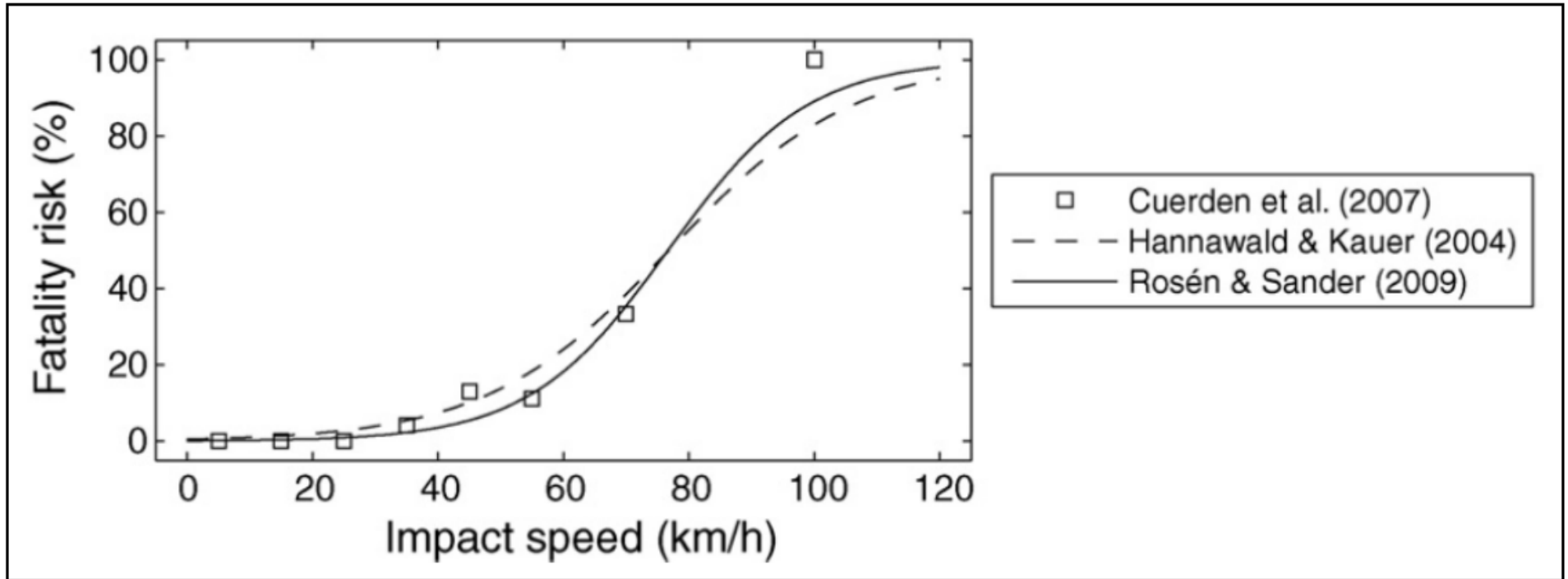
Source: [National Association of City Transportation Officials, New York, NY](#))

Stopping distance

How long it takes to stop (driving an average family car)



Fatality rate for pedestrians in crashes with passenger cars

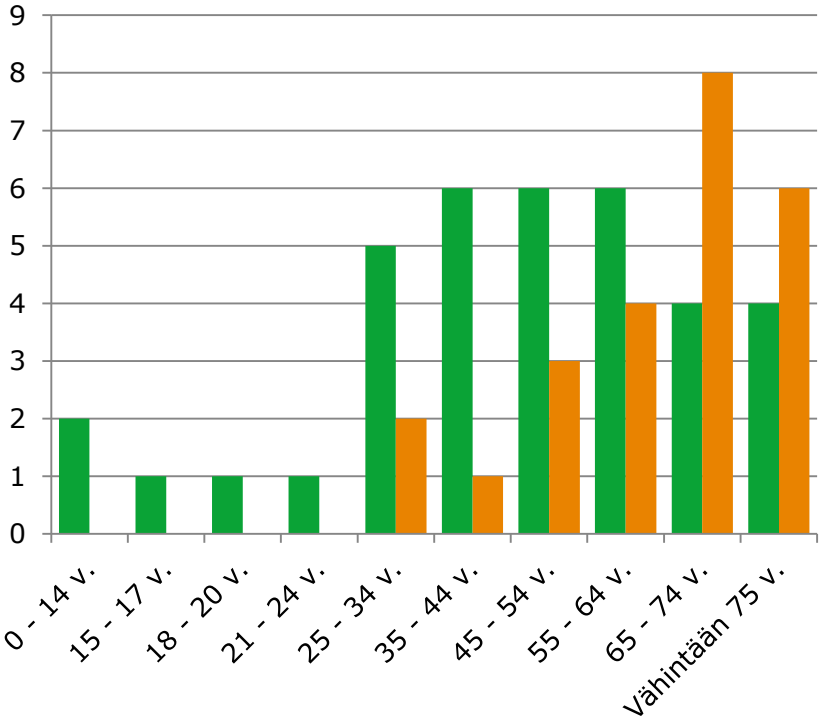


Source: Rosén, E., Stigson, H. & Sander, U. (2011). Literature review of pedestrian fatality risk as a function of car impact speed.

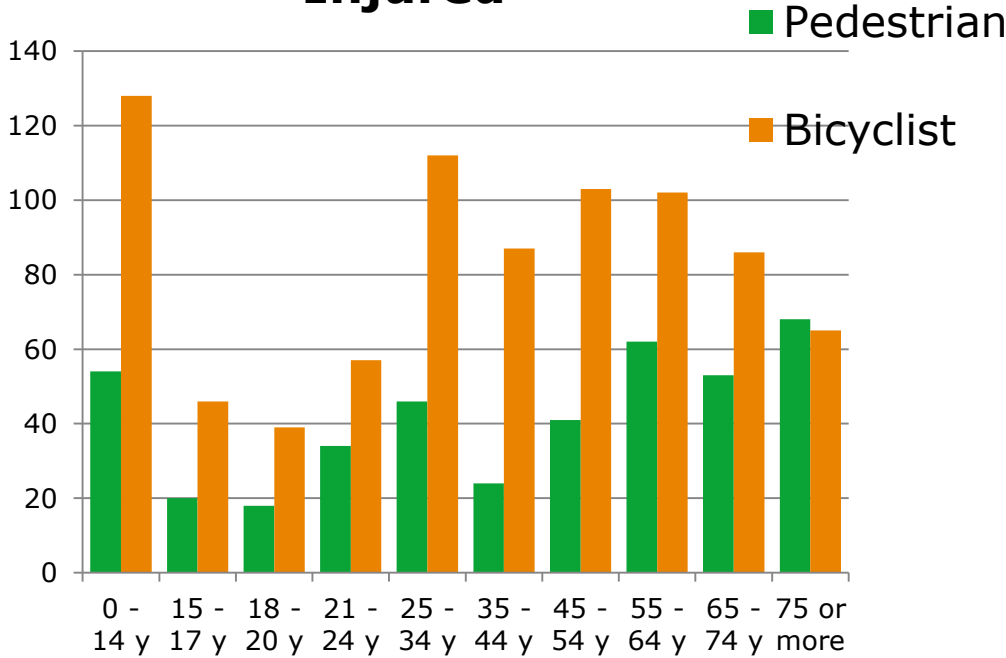
Killed pedestrians and bicyclists in Finland by age in 2014



Killed

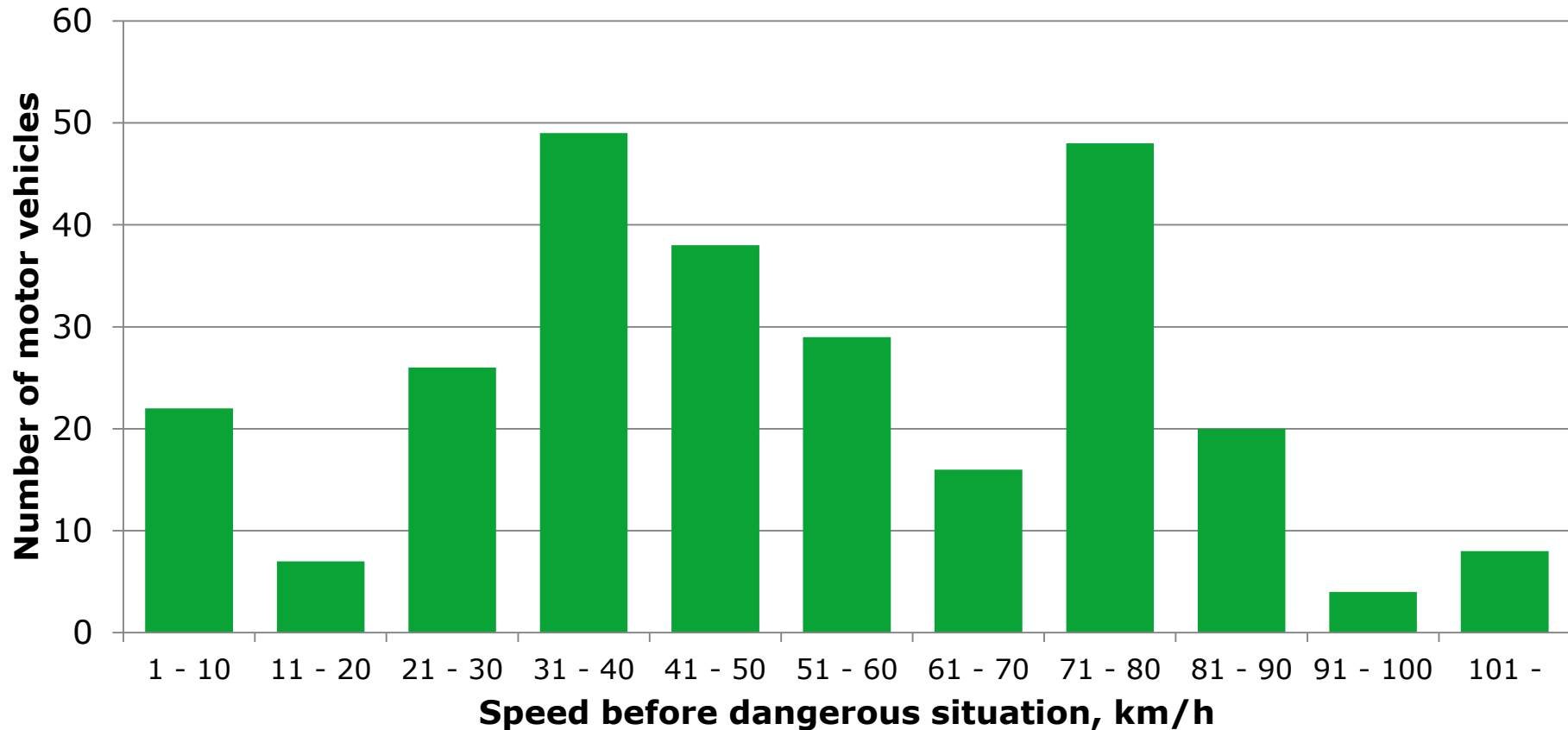


Injured



Source: Statistics Finland

Motor vehicle's speed in fatal pedestrian and bicycle accidents in Finland, 2010 - 2014



**By decreasing speed,
injuries will be prevented and
lives will be saved**



Trafi

Finnish Transport Safety Agency

Finnish Transport Safety Agency

Kumpulantie 9, 00520 Helsinki

PO Box 320, FI-00101 Helsinki, Finland

Telephone +358 29 534 5000

www.trafi.fi