

From 'No Move' to Good Move (post-COVID)

Lessons learned (so far)

Stefan Vandenhende
Advisor to Minister Elke Van den Brandt

15 octobre 2020



BRUXELLES MOBILITÉ
SERVICE PUBLIC RÉGIONAL DE BRUXELLES



Road Safety = Priority = Vision Zero



Elke Van den Brandt

Brussels-Capital Region

Minister for ...

- **Mobility**
- **Public Works**
- **Road Safety**

= Logical combination, but a first!

Good Move
= SUMP
= Vision 2030

What is it? GoodMove.Brussels



Projet de Plan Régional de Mobilité

Plan stratégique et opérationnel

Version approuvée par le Gouvernement le 04 avril 2019



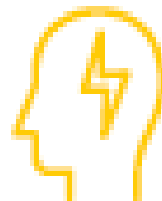
Ce document est la version de projet du PRM approuvée en 1^{ère} lecture.



BRUXELLES MOBILITÉ
SERVICE PUBLIC RÉGIONAL DE BRUXELLES



1 proces



1 gedeelde visie



1 tool

15 octobre 2020

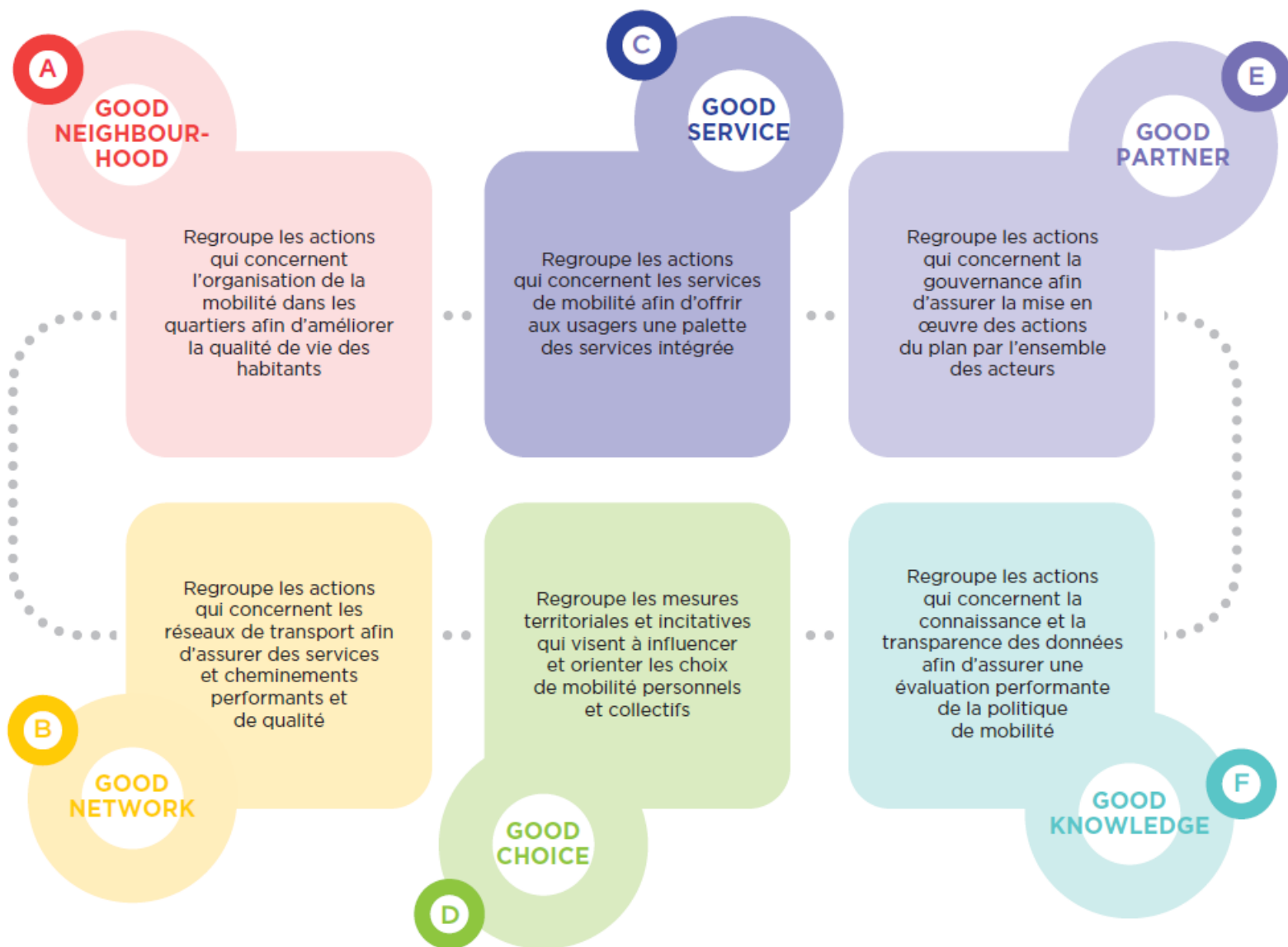




A city vision

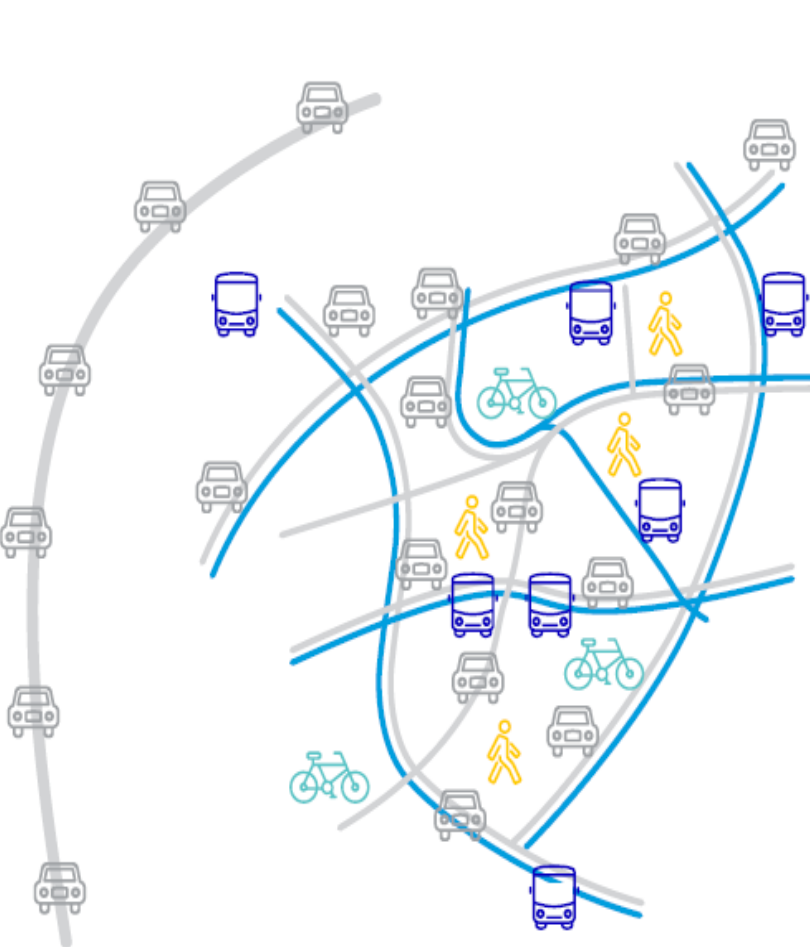


6 pilars – 50 actions



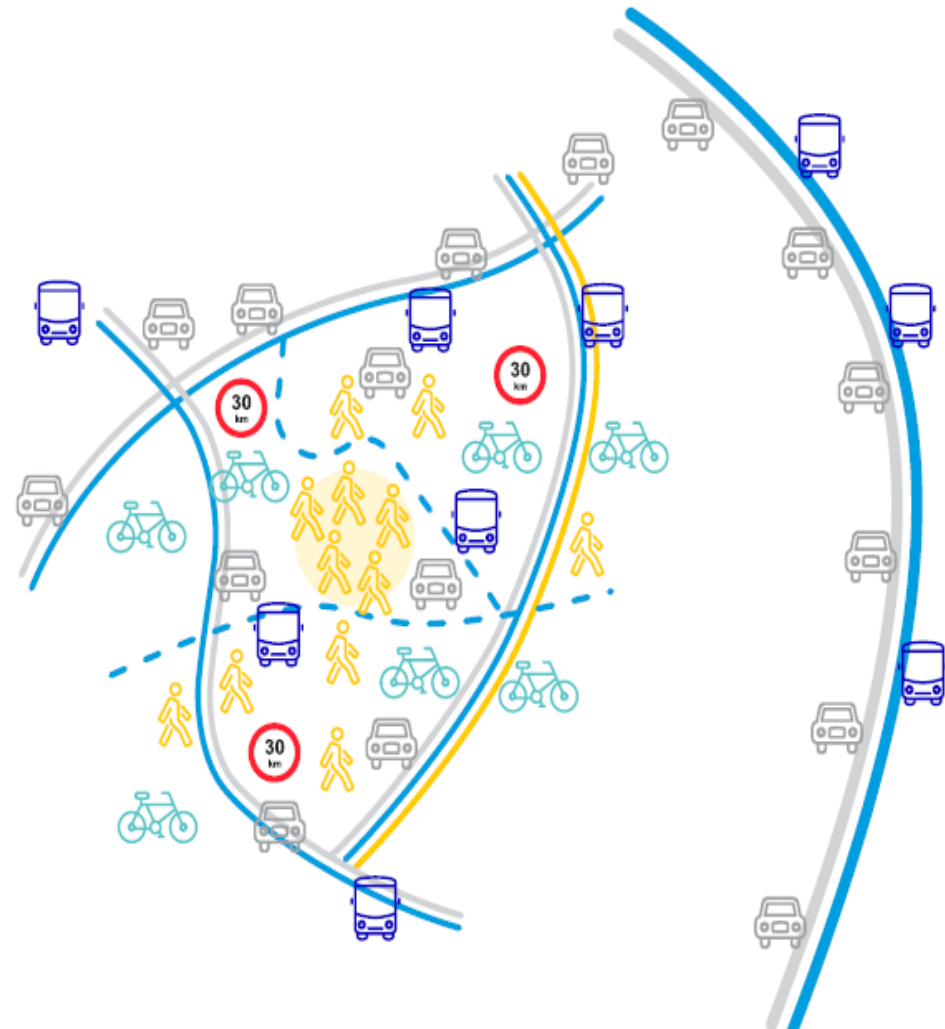
No move

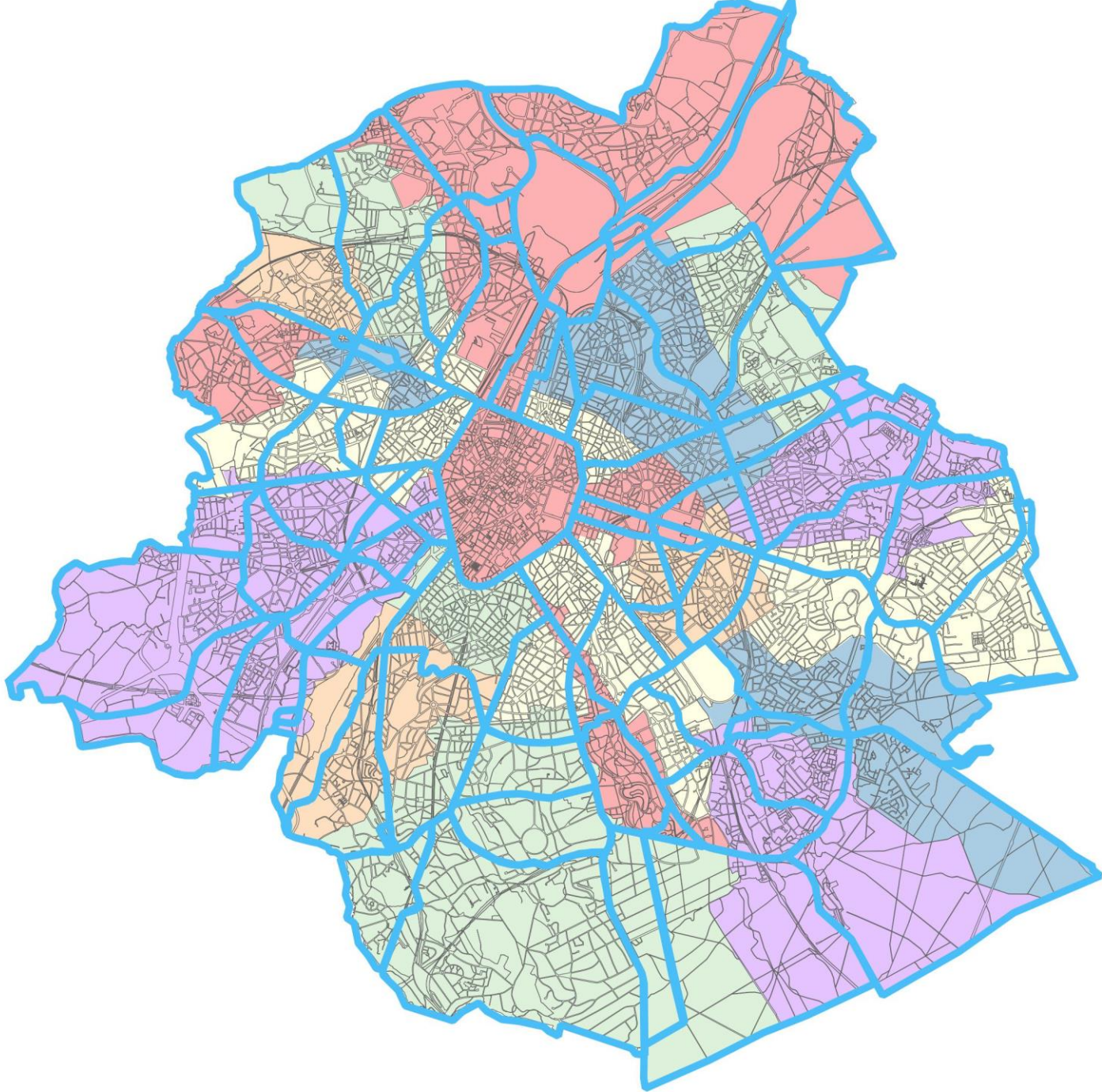
Verkeer doorlatende wijken
Voor iedereen moeilijk bereikbaar



be
good
move

Tegen verkeer beschermde wijken
Voor alle modi bereikbaar

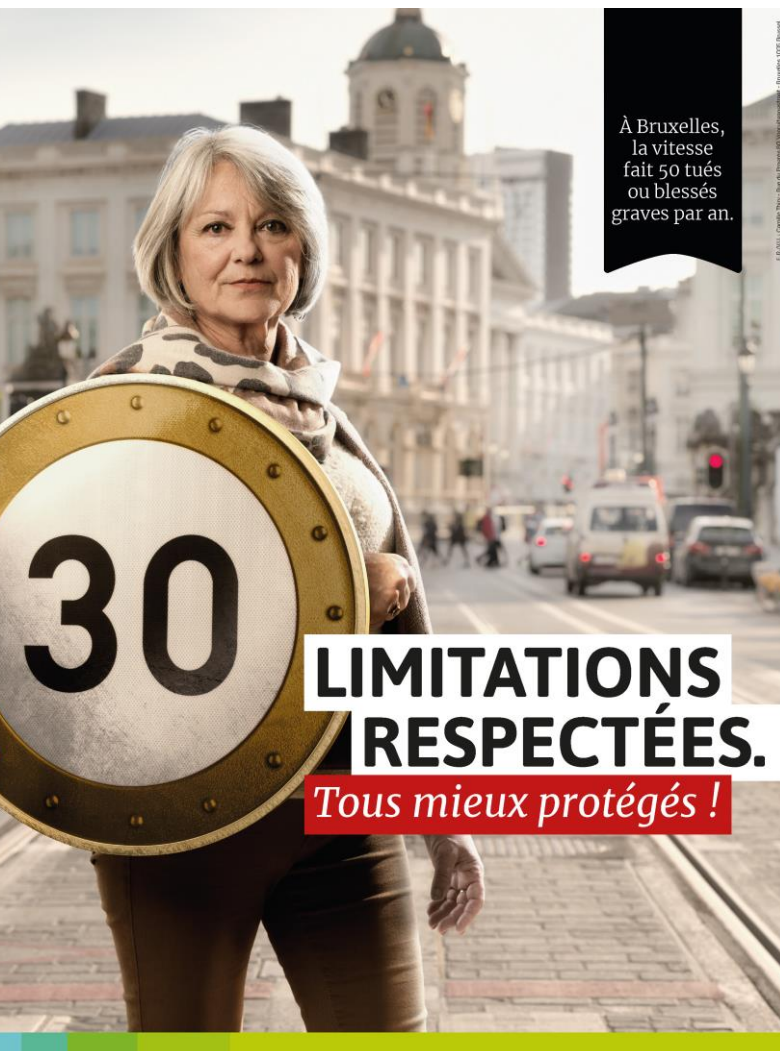




‘City 30’ from 1/1/2021



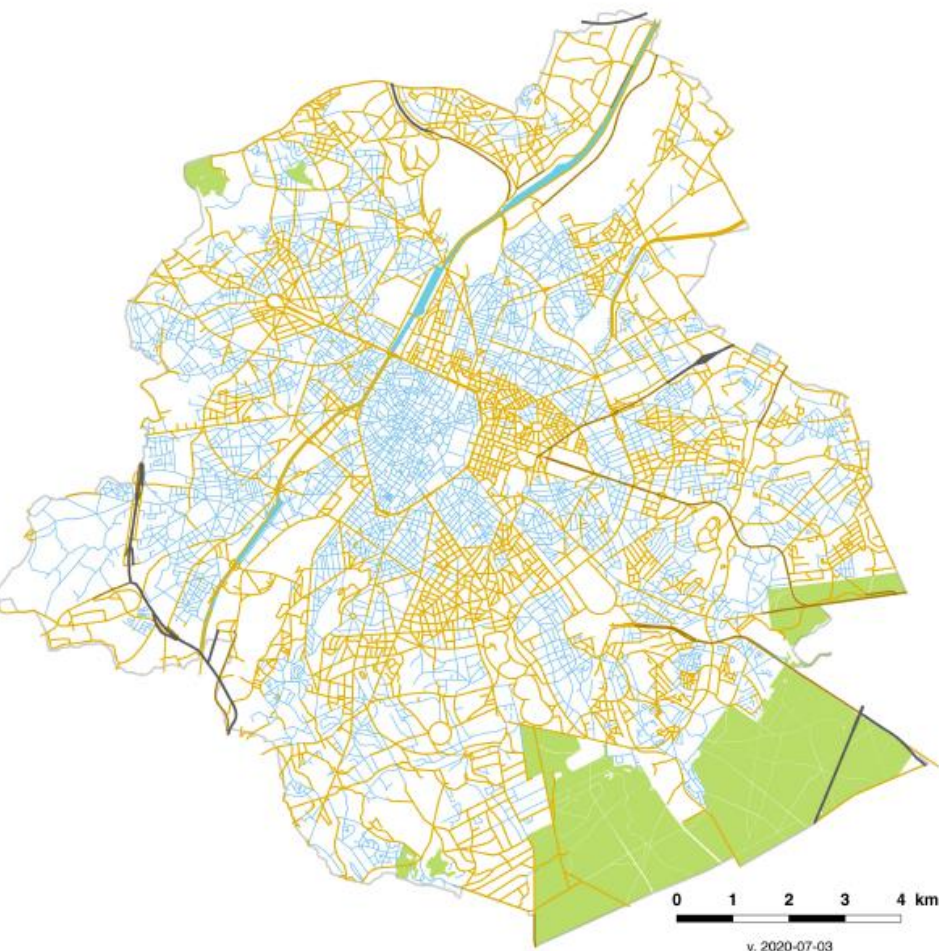
Implementation of City 30



- Identify the roads maintained at 50 or 70
- Take into consideration speed of buses and trams
- Modify the regulations (traffic code)
- Inform and create support for this measure
- Adapt the infrastructure (Road signs & markings)
- Implement appropriate sanction & control policies
- Evaluate the measure

Now

1st of January 2021

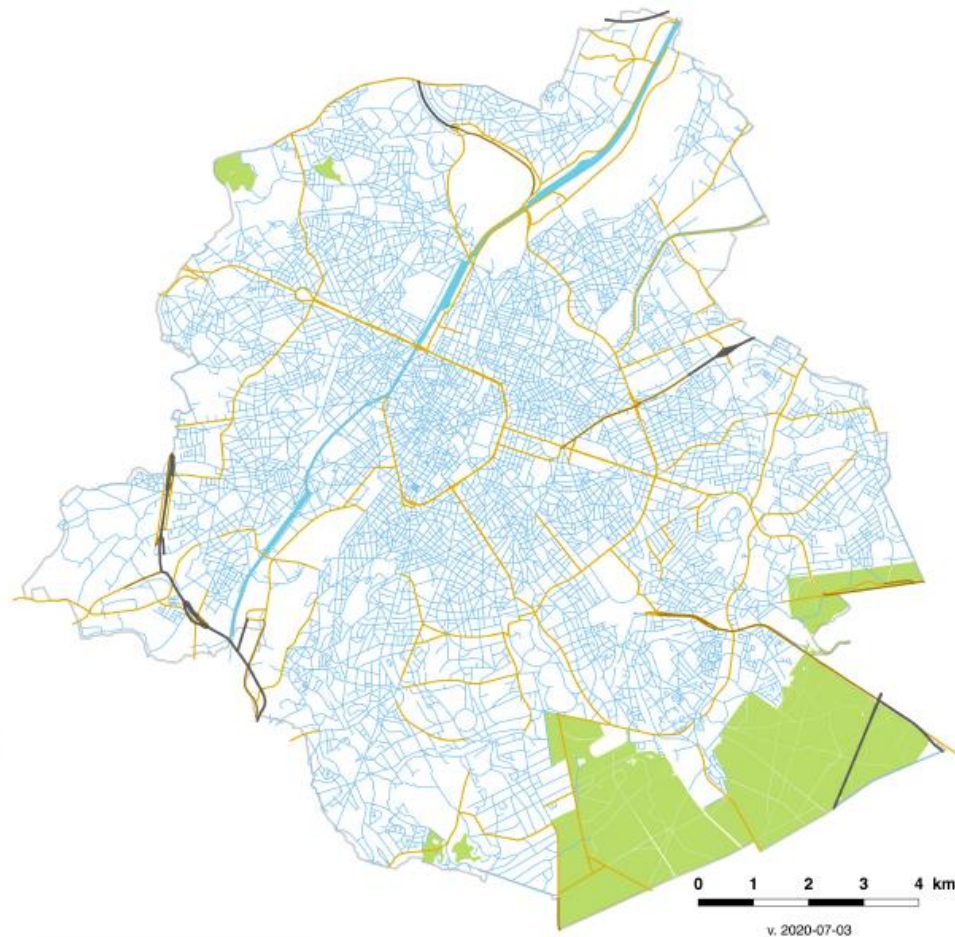


Vitesses (km/h) - Snelheid (km/u)

- 30 ou moins / 30 of minder *
- 50
- 70
- 90-100-120

Limites RBC / BHG grenzen
 Canal / Kanaal
 Forêt (PRAS) / Bossen (GBP)

* zone de rencontre, zone piétonne, rue cyclable, etc.
* woonerf, voetgangerszone, fietsstraat, enz.



Vitesses (km/h) - Snelheid (km/u)

- 30 ou moins / 30 of minder *
- 50
- 70
- 90-100-120

Limites RBC / BHG grenzen
 Canal / Kanaal
 Forêt (PRAS) / Bossen (GBP)

Les voiries latérales d'un axe complexe ont une vitesse autorisée de maximum 30 km/h
De ventwegen van een complexe as hebben een toegelaten snelheid van maximum 30 km/u

* zone de rencontre, zone piétonne, rue cyclable, etc.
* woonerf, voetgangerszone, fietsstraat, enz.

Road safety action Plan ~~2020-2024~~ ... *2021-2022

“Streets General on Road Safety” delayed due to COVID...

Co-construction process with all stakeholders: Administrations, road safety associations, police, public prosecutor’s office, etc.

Workshops on:

- Changing behavior/adherence – campaign City 30 ongoing
- Street infrastructure ‘black points’ – already implementing road plan
- Control & sanction – already implementing 60 new cameras and 3 section radars)
- Gender & road safety
- ...

COVID response?

Mobility during Lockdown (17/3 to 4/5)



VERY LIMITED TRAFFIC

- Car traffic -65% up to -90%
- Slowly up since May

Public Transport

- Capacity 50 %
- Usage 10 – 15 % normal traffic

Biking – 1st down and then up quickly

Visibility of 'ARROGANCE OF SPACE'

LESS AIR POLLUTION

- NO -75%
- NO2 -50%
- Sound pollution -90%

Mobility during the lockdown



Road Safety

- Enormous drop in accidents
- Number of bicycle accidents decreased by 56% (BE)

Survey Espaces-Mobilités (N=1300)

- 60% calls for more space for pedestrians (also to the detriment of cars)
- 1 in 3 wants to cycle more
- 1 in 3 wants to use less public transport

Good Neighbourhood

Normal plan: 50 calmed neighbourhoods

Start work on five neighbourhoods/year

- Call for projects "local mobility contracts"
- Selected the first 10 for 2020-2021

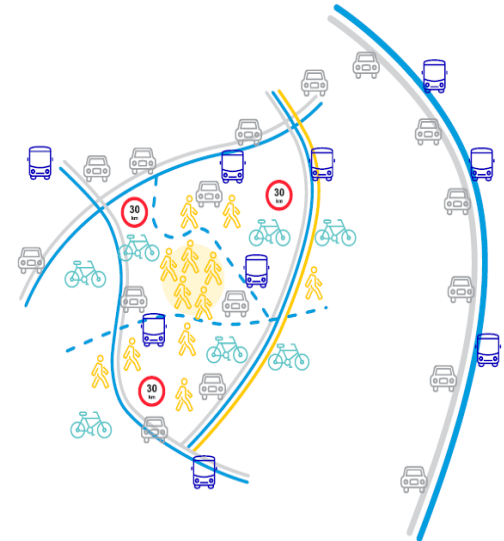
No move

Verkeer doorlatende wijken
Voor iedereen moeilijk bereikbaar



be
good
move

Tegen verkeer beschermde wijken
Voor alle modi bereikbaar



BRUXELLES MOBILITÉ
SERVICE PUBLIC RÉGIONAL DE BRUXELLES

15 octobre 2020

be
good
move
be.brussels

Urgency COVID: More space for pedestrians



PARKS

- Three major parks 100% car-free and expanded

SLOWSTREETS

- Aid to local councils for quick implementation (obstacles and signage) of slow streets : 20km/h, absolute priority to pedestrians)
- Total of 100 km in 16 of the 19 municipalities.



Urgency COVID: Summer plans cancelled



Réappropriiez-vous les rues et les places de Bruxelles cet été, Bruxelles Mobilité attend vos projets!

‘HOLIDAY’ TACTICAL URBANISM

- Many people cannot travel
- No large-scale public events
- Financial support to lots of small bottom-up initiatives so that Brussels can be a holiday city (playgrounds, picnic areas, etc.)

Good Network

Road safety & crossroads



SPEEDING

- Continued enforcement
- Specific communication on speed limit compliance during lockdown

LIGHTS

- Adaptation of lights to actual traffic flows to leave more greens for cyclists and pedestrians.

Normal planning: Bike network

Spécialisation multimodale des voiries
Multimodale wegenspecialisatie

Vélo / Fiets

BRUXELLES MOBILITÉ
BRUSSEL MOBILITEIT
SERVICE PUBLIC RÉGIONAL DE BRUXELLES
GEWESTELIJKE OVERHEIDSDIENST BRUSSEL



Service Planification
Dienst Planificatie
v. 2020-03-05

A cycling network of privileged routes

- « BikePLUS » = red = main itineraries
- « BikeCOMFORT » = blue = secondary itineraries, comfortable

Calmed Neighbourhoods

- « BikeQUARTIER » = gray = traffic calmed zones

Post-lockdown urgency



“FLATTEN THE PUBLIC TRANSPORTATION RUSH HOURS”

(Brussels has very high peak times : 49% of day traffic in only 4 hours 20 minutes)

- **CALL** not to solve a health crisis by a massive influx of cars.
- **CALL** to the people to **BIKE** and **WALK** in solidarity with the people who need to take the public transport.



Urgency COVID : 40 km de pistes cyclables

40 km
extra bike lanes
for Brussels



Elke Van den Brandt

Brussels Minister of Mobility, Road Safety and Public Works



“FLATTEN (THE PUBLIC TRANSPORTATION) RUSH HOURS”

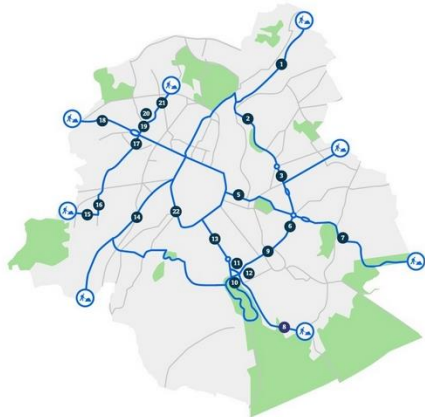
40 KM OF EXTRA BIKE CORRIDORS

- Based on BikePLUS network
- Mainly concrete blocks and paint
- Message: Creating safe space for cyclists
- Major traffic arteries

15 octobre 2020

COVID urgency: 40 km bike lanes

Projet de 40 km de pistes cyclables
supplémentaires en région bruxelloise



Réseau "Vélo PLUS"
plan régional de mobilité Good Move



BRUXELLES MOBILITÉ
SERVICE PUBLIC RÉGIONAL DE BRUXELLES

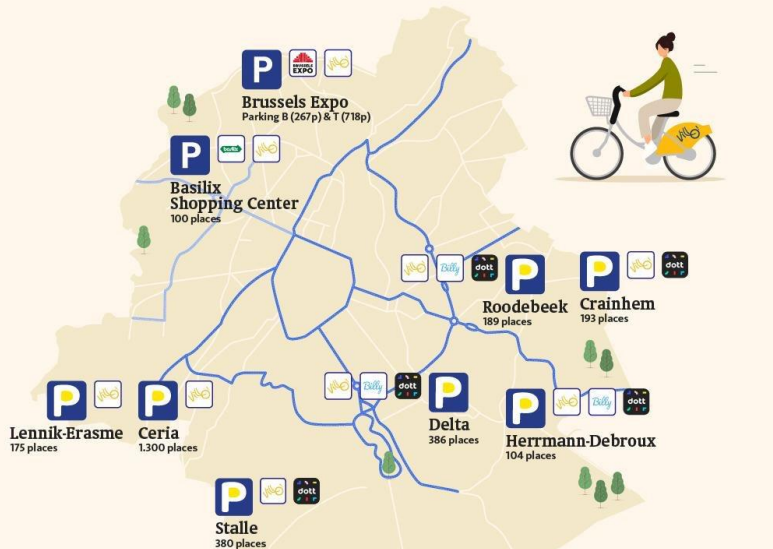
15 octobre 2020

be
**good
move**
be.brussels

Good Service

COVID Urgency: People coming from outside the city

Park + Bike

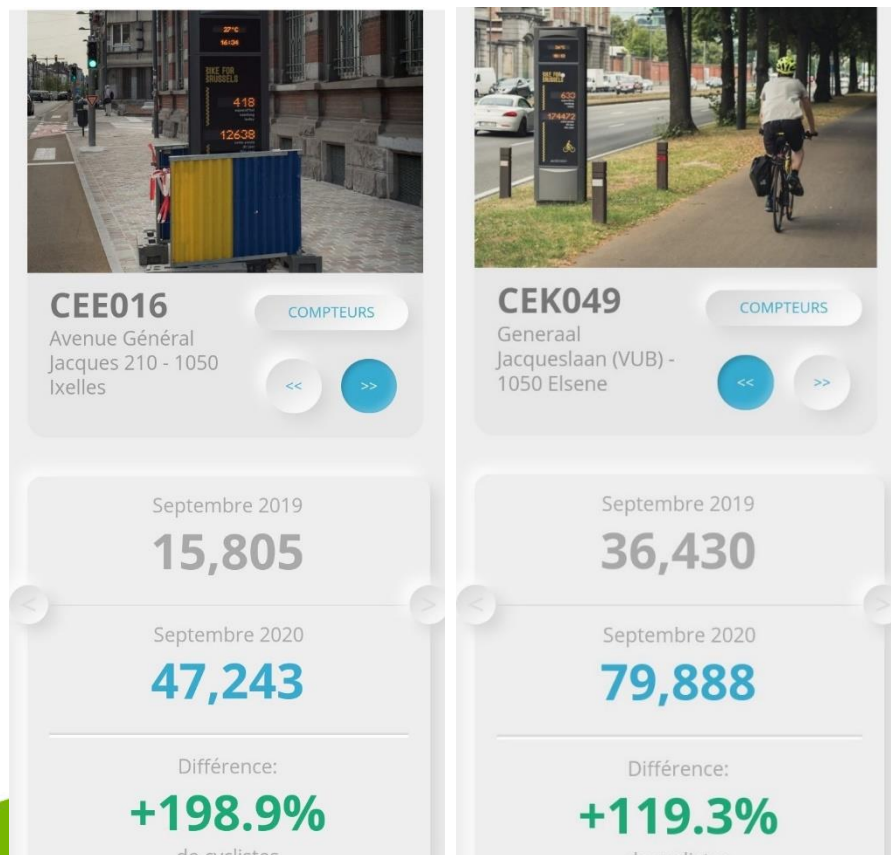


PARK+BIKE

To allow people coming to Brussels from outside to use the cycle paths

- Free public car parks at the entrance to Brussels
- Opening of new car parks in partnership with the public and the private sector
- Bicycle terminal near parking lots
- Increased shared mobility options

Results so far ...



Cars

- Peak hours flattened
- September = 93% of traffic
- Trajectory times -13% = less traffic jams

Public Transport

- Capacity 100 %
- Usage 65-70 % normal traffic

Biking

- +87% between septembre 2019 & 2020
- Average +13%/y (18-19 +8,9%)

Co-construct your vision
Tactical urbanism & quick wins
Don't wait for perfect
Show the difference (quickly)