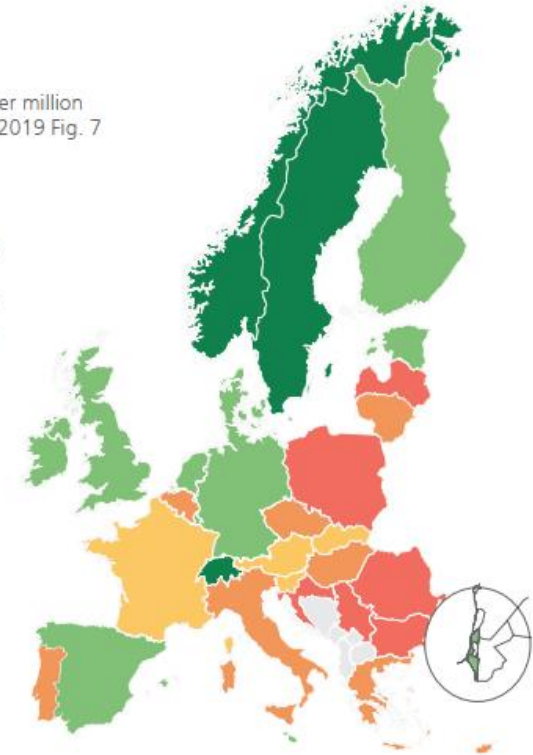
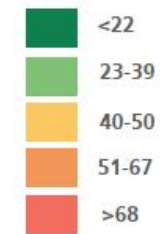


# ETSC PIN PROGRAMME

- 32 participating countries, including all EU Member States, and experts in each
- Comparing road safety performance
- 39 PIN Flash reports
- PIN Talks

Road deaths per million inhabitants in 2019 Fig. 7



**TOYOTA**



# Road Safety Policy Formulation and Implementation

## 1. Basic road safety management

*(vision, targets, national road safety programs)*



## 2. From strategy to action

*(lead agency, accountability, budget, casualty and SPI data, research, exchange of best practice)*



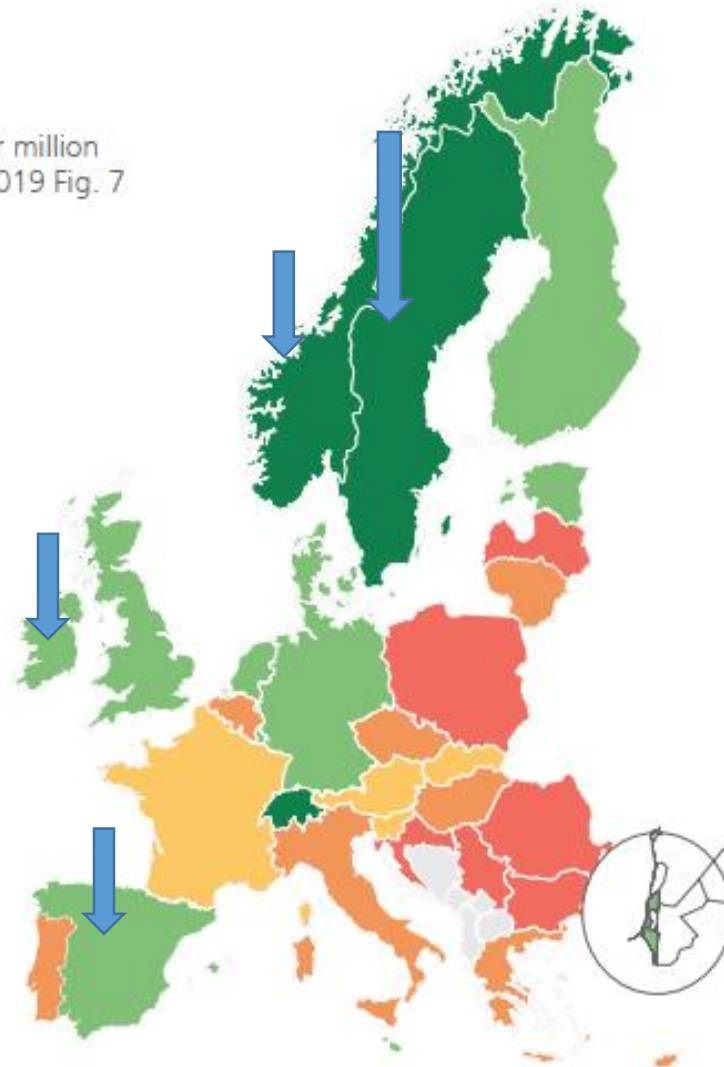
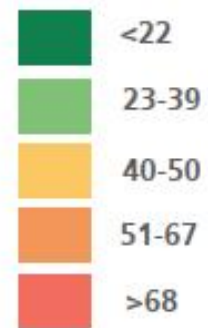
## 3. Implementation, updating and evaluation

*(monitoring, publication of results, reporting on implemented measures, evaluation)*

# Effective Road Safety Strategies

MAP 2:

Road deaths per million inhabitants in 2019 Fig. 7

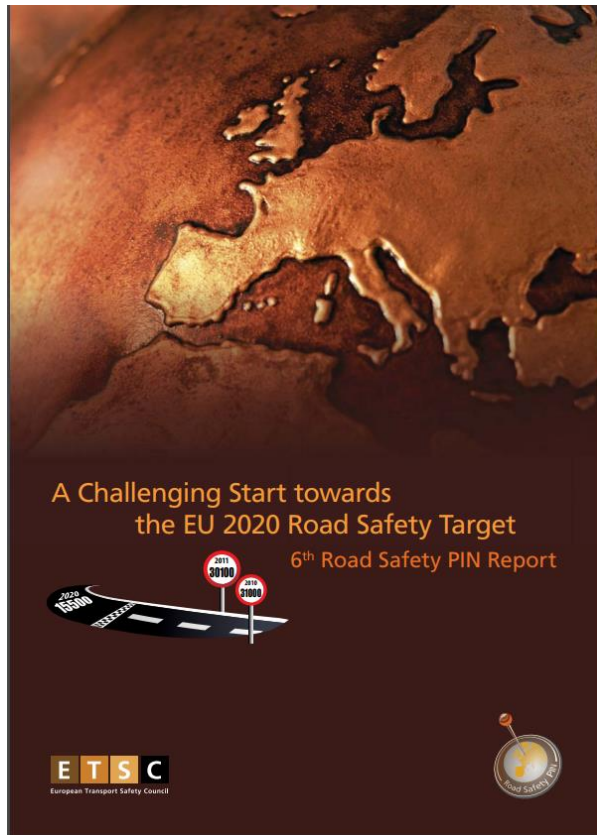


# What do they have in common?

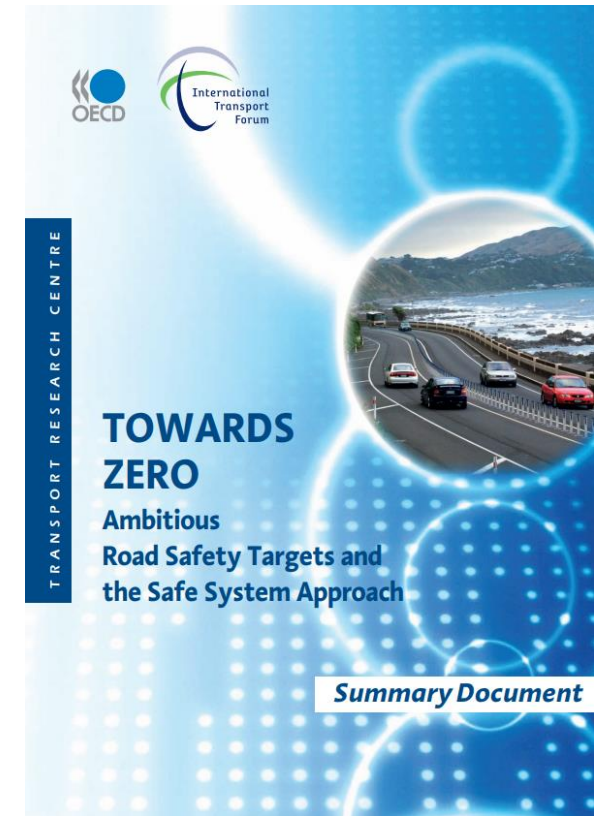
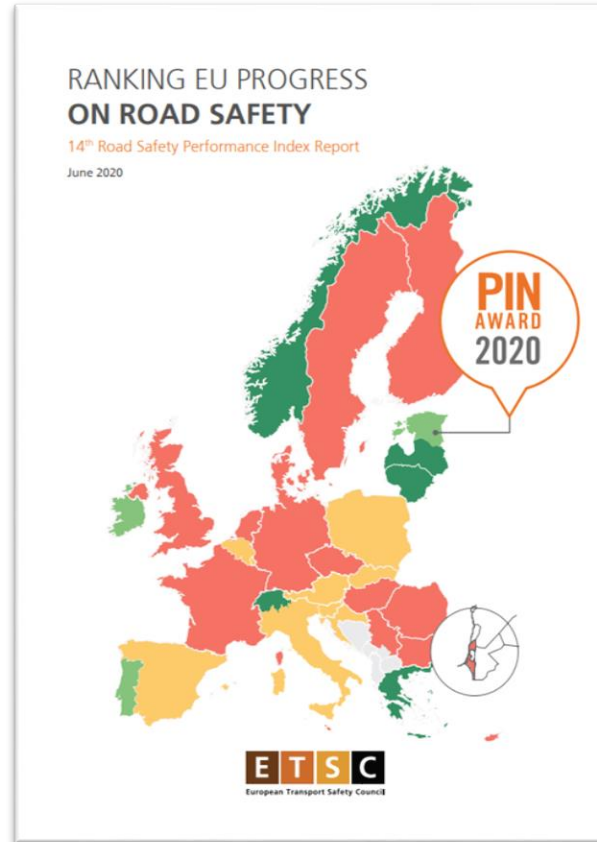
- Vision
- Targets
- Safety performance indicators
- Lead Agency or Authority
- Monitoring
- **Close cooperation between stakeholders**
- Science-based approach

*But no one size fits all!*

# Further reading



[www.etsc.eu/pin](http://www.etsc.eu/pin)



<https://www.itf-oecd.org/towards-zero>