



VeSafe

E-guide: good practices for work-related vehicle risks.

Matthew Heppleston.

Praise Conference

Brussels

24th October 2017

Why do we need action?

- *Vehicle-related accidents account for 29 % of all fatal occupational accidents !*
- *"Loss of control of a vehicle" is the number one major cause of accidents*
- *so whether you're a worker, an employer or a safety and health expert, you need to understand and control the hazard.*

Why do we need action?

- *First cause of fatal accident at work*
- *Main types:*
- *42% light vehicles*
- *28% HGV*
- *6% 2 or 3 wheelers*
- *Problem for young workers 13% of all fatal accidents for <25 years involved 2 or 3 wheels*
- *Overall 8% fatal accidents at work in age range 18-24 years.*

Introduction to the VeSafe project

- *The [VeSafe e-guide](#) is an interactive one-stop shop for information on vehicle-related risks at work. It covers safe driving, workplace transport and working on or near a road.*
- *A joint effort by EU-OSHA and the European Commission, the guide includes many examples of good practice and an overview of relevant regulations.*
- *What's more, it's free and easy to use, and you can filter the information by risk or vehicle type.*



VeSafe Project Consortium

TNO innovation
for life

tøi : Institute of Transport Economics
Norwegian Centre for Transport Research

LEARNWAYS

vhp 
HUMAN PERFORMANCE


FESVIAL
FUNDACIÓN
PARA LA
SEGURIDAD VIAL

Kooperationsstelle
Hamburg IFE GmbH

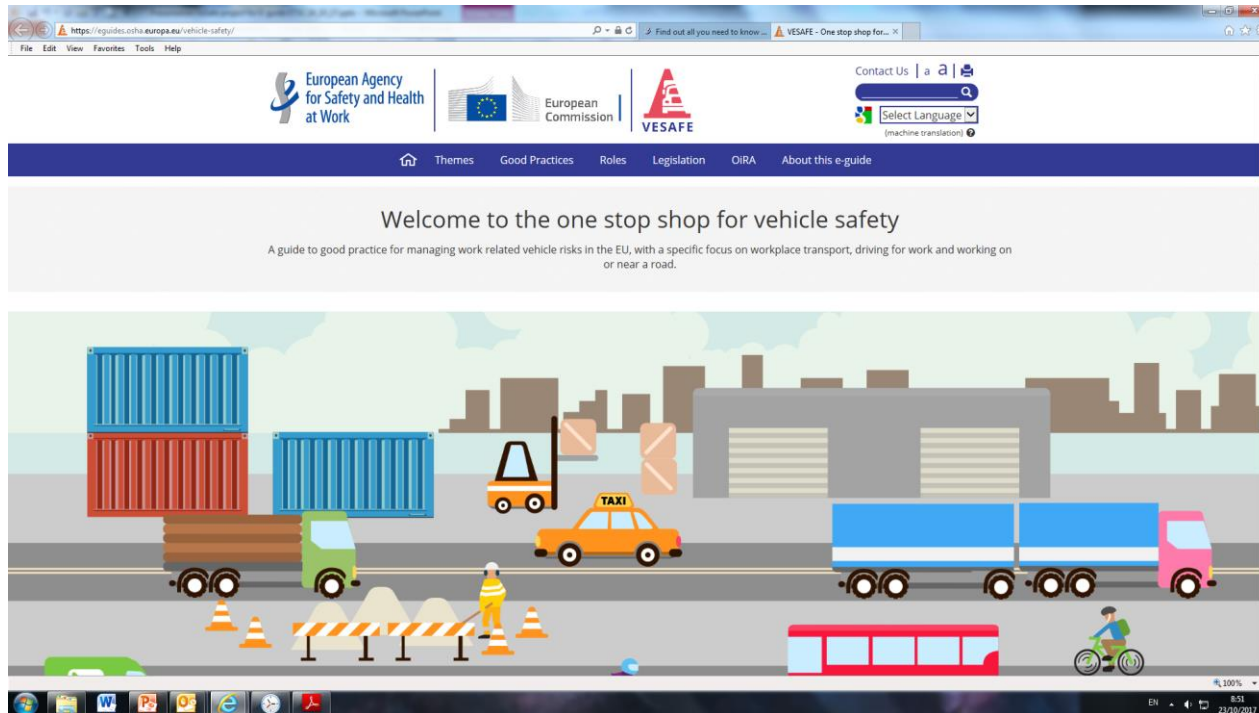
Introduction to the E-guide

- *The interface*
- *Key articles*
- *Good practices*
- *Database & Search engine*
- *Demo*



European
Commission

Welcome screen





European
Commission

E-guide – Searching

<https://eguides.osha.europa.eu/vehicle-safety/>

Find out all you need to know ... VESAFE - One stop shop for...

European Agency for Safety and Health at Work | European Commission | VESAFE

Contact Us | [Search]

Themes | Good Practices | Roles | Legislation | OIRA | About this e-guide

Select a vehicle type or risk

The main part of this guide are good practice examples for you to learn from. To find the good practices that are applicable to you we have tagged them by vehicle and by risk.

Filter by vehicle

Filter by risk

Or select the area you work in

Safe driving for work
Road accidents involving drivers at work are a serious problem.

Working on or near a road
We do not have much data on accidents involving work on or near roads. This may be because it is not clear who should collect and maintain such data, whether it is the road authorities or the labour inspectorates.

Workplace transport safety
A high proportion of workplace transport accidents involve non-drivers, i.e. people who have no direct control of the vehicle or equipment.

75% 8:55 23/10/2017



European
Commission

Searching by role.

The screenshot shows a web browser displaying the European Commission's e-guide website. The page is titled "Searching by role." and features a navigation menu with options: Themes, Good Practices, Roles, Legislation, QIRA, and About this e-guide. The "Roles" section is highlighted, showing three categories: "Hello worker", "Hello employer", and "Hello safety expert". Each category has a brief description and a link to "More on roles".

Safe driving for work
Road accidents involving drivers at work are a serious problem.

Working on or near a road
We do not have much data on accidents involving work on or near roads. This may be because it is not clear who should collect and maintain such data, whether it is the road authorities or the labour inspectorates.

Workplace transport safety
A high proportion of workplace transport accidents involve non-drivers, i.e. people who have no direct control of the vehicle or equipment.

Did you know?
The UK Highways Agency reports that four workers have died in the first half of 2005 - compared with just one death in the whole of 2004. "Everyone is entitled to a safe workplace, yet road workers risk death and injury at work every day [and night] making sure our roads remain safe and in good condition."

Roles

Hello worker
Do you drive, work with on, or around vehicles? This guide can give you practical solutions on how to do that safely. Search the good practices by vehicle or activity type.
[More on roles](#)

Hello employer
Are you managing or controlling vehicle related risks to your workers effectively? This guide gives you good examples on how to act on vehicle related risks, to create a safer work place for your workers.
[More on roles](#)

Hello safety expert
Do you want an overview of the legal requirements, key risks (management) and effective good practices relating to work related vehicle use in the workplace and on the road? This guide will be your starting point to understand how work related vehicle risks should be managed to prevent injury.
[More on roles](#)

© 2017 EU-OSHA | an agency of the European Union
Site map | Contact Us | Accessibility | Privacy notice | Legal notice | About this e-guide

75%
EN 8:09
23/09/2017

Key articles

- *Based on EU directives, key literature, available expertise*
- *Three domains → Three key articles*
- *1st domain: working on or near a road*
- *2nd domain: workplace transport safety*
- *3rd domain: safe driving for work*

Key articles

Each key article presents:

- *Domain context*
- *Relevant issues/risks*
- *Regulations particular to that domain*
- *Strategies to define & implement measures*
 - ➔ *reduce and control WRVR*

Good practices – identification

- *301 Good Practices (GPs) throughout Europe*
- *Sources:*
 - *employers' & employees' associations, research institutes, EU-OSHA, inspectorates, insurance companies, non-governmental experts*
 - *EC OSH Advisory Committee Working Party*
 - *Well-defined internet searches*
 - *Earlier projects of consortium partners*

Good practices – Selection criteria

- *Relevant occupational **risks** covered*
- *Can be **included** in employers' prevention **policy***
- ***No expert knowledge** / special instruments needed*
- *Strong involvement of **workers** (& representatives)*
- *Proven **safety effect***
- ***Visual** presentation of material, if possible*
- *Spread around **Europe***

Good practices

*101 GPs have been rewritten for full presentation in the E-guide: **general description and fact sheets***

Fact sheet:

- *Plain English (this facilitates auto-translation)*
- *Aim of the good practice*
- *Target group*
- *Risk types (connection to OiRA)*
- *Link to source website (if available)*

*Other 200 GPs: included as **hyperlinks to external content***

Searching and database

Searching: *Good Practices are tagged to enable fast searching:*

- *Select a **means of transport or risk type**, or*
- *Through one domain in the **key article**, or*
- ***Free text search***

Database:

- *Easy to navigate in and understand*
- *Google Translate functionality for each page*
- *Easy maintenance & uploading*



European
Commission

Means of transport	Risk types
Bicycle	Delivery
Bus	Driver
Car	(Un)loading
Construction vehicle	Manoeuvring
Containers	Maintenance
Lift truck	Parking
Pedestrians	Physical hazards
Taxi	Safety culture
Tractor and off-road	Vehicle interaction
Truck	Workplace
Two-wheeled motor	
Van	

E-guide – Testing

- *3 member states for testing: ES, DE, NL*
- *Diverse companies: passenger transport, delivery, heavy goods,*
- *Companies approached through unions, employee and worker representatives, EU OSHA survey panel, ETSC, etc*

Feedback:

- *Positive responses (majority)*
- *'Look-and-feel' and structure are good*
- *Content is considered relevant, especially GPs*
- *34% improved attitude toward safe behaviour*
- *71% would recommend the site*

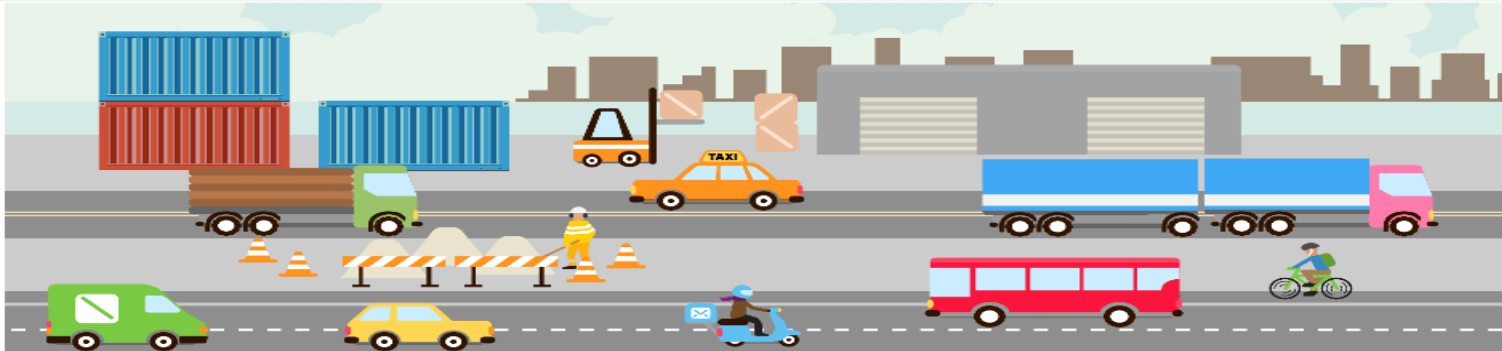


European
Commission

E-guide - where to find it

Welcome to the one stop shop for vehicle safety

A guide to good practice to reduce work related vehicle risks in the EU.



Good practice

The guide contains good practices, many of them with fact sheets, and others included as hyperlinks. They are categorized by means and by risk type, but you can also do a free text search.

[All good practices](#)

Key articles

This guide also contains three key articles that give a deep insight into safety issues in three domains: working on or near a road, workplace transport safety and safe driving for work.

[All key articles](#)

Translation

Each page in this e-guide can automatically be translated into other languages through the Google Translate functionality on top of the page.

Select a means type or risk

The main part of this guide are good practice examples for you to learn from. To

Sort by means

[Bicycle >](#) [Bus >](#) [Car >](#)

★ Sort by risk

[Delivering >](#) [Driver >](#) [Loading/unloading >](#)

eguides.osha.europa.eu/vehicle-safety/

Advantages of an e guide

- *Automatic translation into **many languages** (also non-EU), this will improve over time*
- *E-guide structure allows for **continuous** updating and development*
- ***Connect** E-guide database **with the OiRA** risk evaluation tool*

Conclusions of the VeSafe project

E-guide on work-related vehicle risks is an attractive resource of practical knowledge for drivers, employers and safety experts

- *Relevant and practical information freely available for all (particularly SMEs) throughout Europe*
- *Provides easy-to-implement Good Practices, which offers specific solutions for everyone*

Challenges for the future

- *Keep E-guide up-to-date with new state-of-the-art information and Good Practices ...*
- *Keep information relevant and easy to find for the end-user*
- *... and communicate this to stakeholders (e.g. SMEs, employers, workers)*
- *Give users the opportunity for online feedback*



European
Commission

Welcome to the one stop shop for vehicle safety

A guide to good practice to reduce work related vehicle risks in the EU.



Good practice

The guide contains good practices, many of them with fact sheets, and others included as hyperlinks. They are categorized by means and by risk type, but you can also do a free text search.

[All good practices](#)

Key articles

This guide also contains three key articles that give a deep insight into safety issues in three domains: working on or near a road, workplace transport safety and safe driving for work.

[All key articles](#)

Translation

Each page in this e-guide can automatically be translated into other languages through the Google Translate functionality on top of the page.

Select a means type or risk

The main part of this guide are good practice examples for you to learn from. To find the good practices that are applicable to you we have tagged them by means and by risk.

Sort by means

- [Bicycle >](#)
- [Bus >](#)
- [Car >](#)
- [Construction vehicle >](#)
- [Containers >](#)
- [Lift truck >](#)
- [Pedestrians >](#)
- [Taxi >](#)
- [Tractor and off-road >](#)
- [Truck >](#)
- [Two-wheeled motor >](#)
- [Van >](#)

Sort by risk

- [Delivering >](#)
- [Driver >](#)
- [Loading/unloading >](#)
- [Maneuvering >](#)
- [Maintenance >](#)
- [Parking >](#)
- [Physical hazards >](#)
- [Safety culture >](#)
- [Vehicle interaction >](#)
- [Workplace >](#)

<https://eguides.osha.europa.eu/vehicle-safety/>



*Thank you for your attention
and have a safe onward
journey!*

matthew.heppleston@ec.europa.eu

Weblink: <http://ec.europa.eu/social>