



PRAISE - European Conference on Work-Related Road Safety
24th October 2017, Brussels

Work Related Road Safety Examples from Europe and the World - Germany -

VISION ZERO.
Keiner kommt um. Alle kommen an.

WRRS in Germany

- Facts and figures
- Measures tackling WRR accidents

Accident insurance system in Germany

- Institutions for statutory accident insurance and prevention (BGs) and the public-sector accident insurers (UKs) are responsible for occupational safety and health within workplaces.
- This responsibility covers accident prevention, rehabilitation and compensation.
- It includes road traffic accidents as itinerary accidents, on-mission road accidents and work accidents on the road with professional drivers.

Data collection

Road accidents statistic:

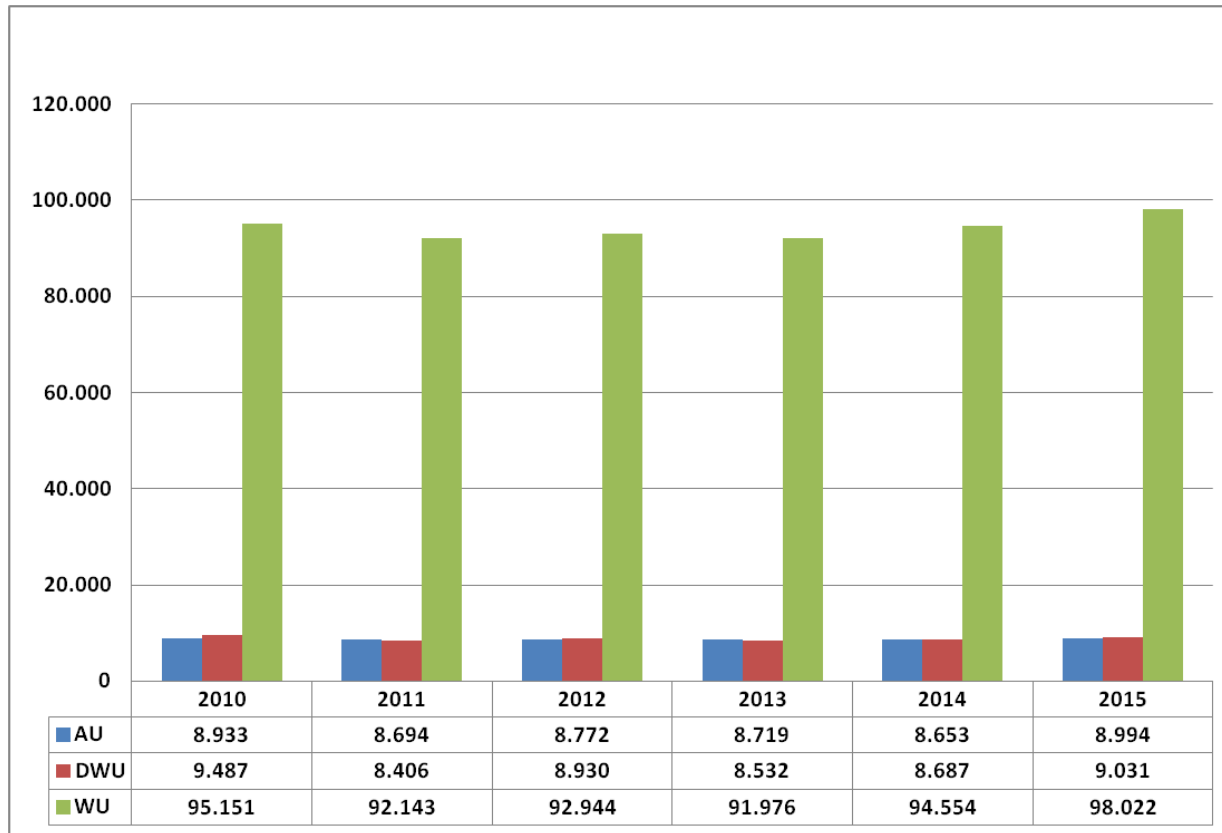
- no itinerary accidents are collected
- killed, severe injured, slight injured

Type of accidents based in DGUV-statistic:

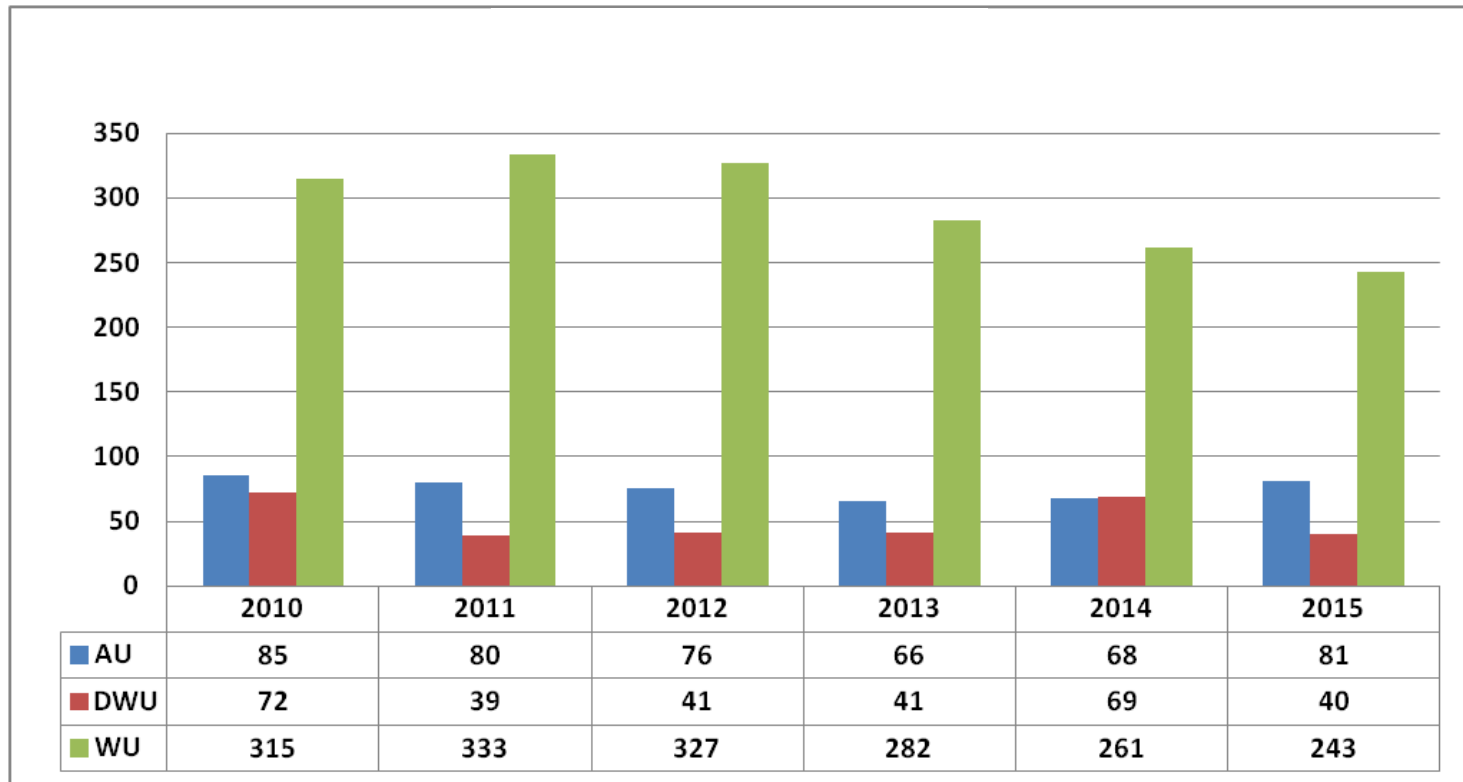
- UA 2: work accidents on the road
- UA 4: work accidents on mission (outside of the premisses) which occurs on public road and places
- UA 6: itinerary accident (between home and work)
- Registered accidents: minimum 4 days without ability to work
- up to 3 days of inability: slight injured



Work related road accidents BG



Work related road accidents BG - killed



source: DGUV

Registered accidents, new pensions, killed by accident type (BG) - 2015

Type of accident		registered accidents		new pensions		killed	
		amount	%	amount	%	amount	%
Work accident	accident at workplace	751.667	80,7	12.269	70,3	290	39,4
	accident on the road	8.994	1,0	357	2,0	86	11,7
	accident on mission (not road)	9.414	1,0	347	2,0	5	0,7
	accident on mission (road)	9.031	1,0	333	1,9	47	6,4
	total	779.106	83,7	13.306	76,2	428	58,2
itinerary acc.	itinerary accident (not road)	54.128	5,8	1.334	7,6	11	1,5
	itinerary accident (road)	98.022	10,5	2.824	16,2	297	40,4
	total	152.150	16,3	4.158	23,8	308	41,8
Total		931.256	100,0	17.464	100,0	736	100,0

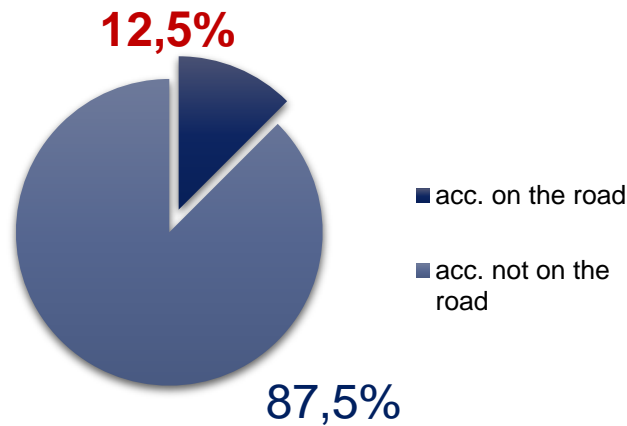
12,5 %

20,1%

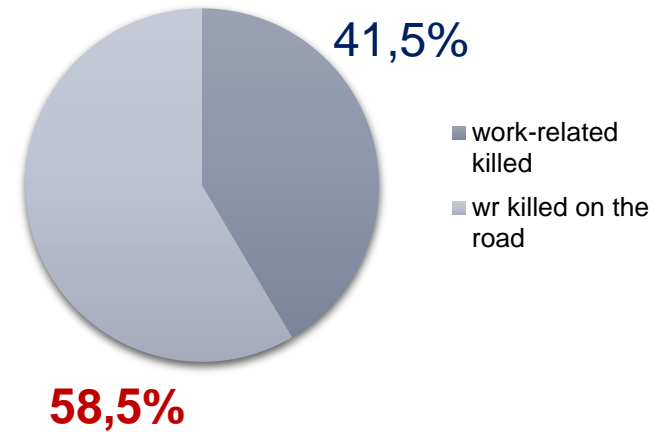
58,5%

Dimension of work-related road accidents and deaths - 2015

931.256 work accidents



736 killed work-related

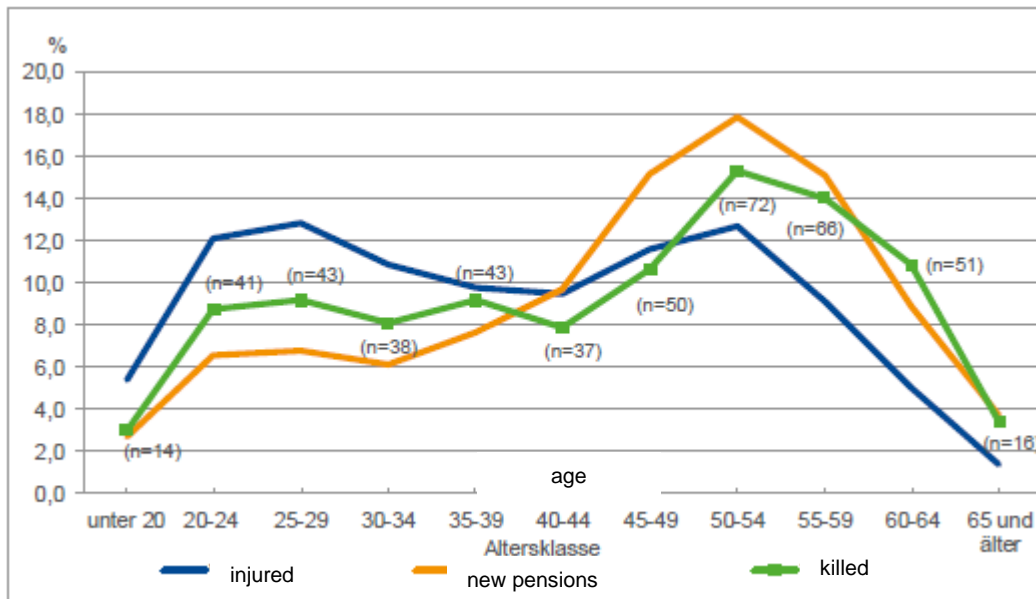


source: DGUV

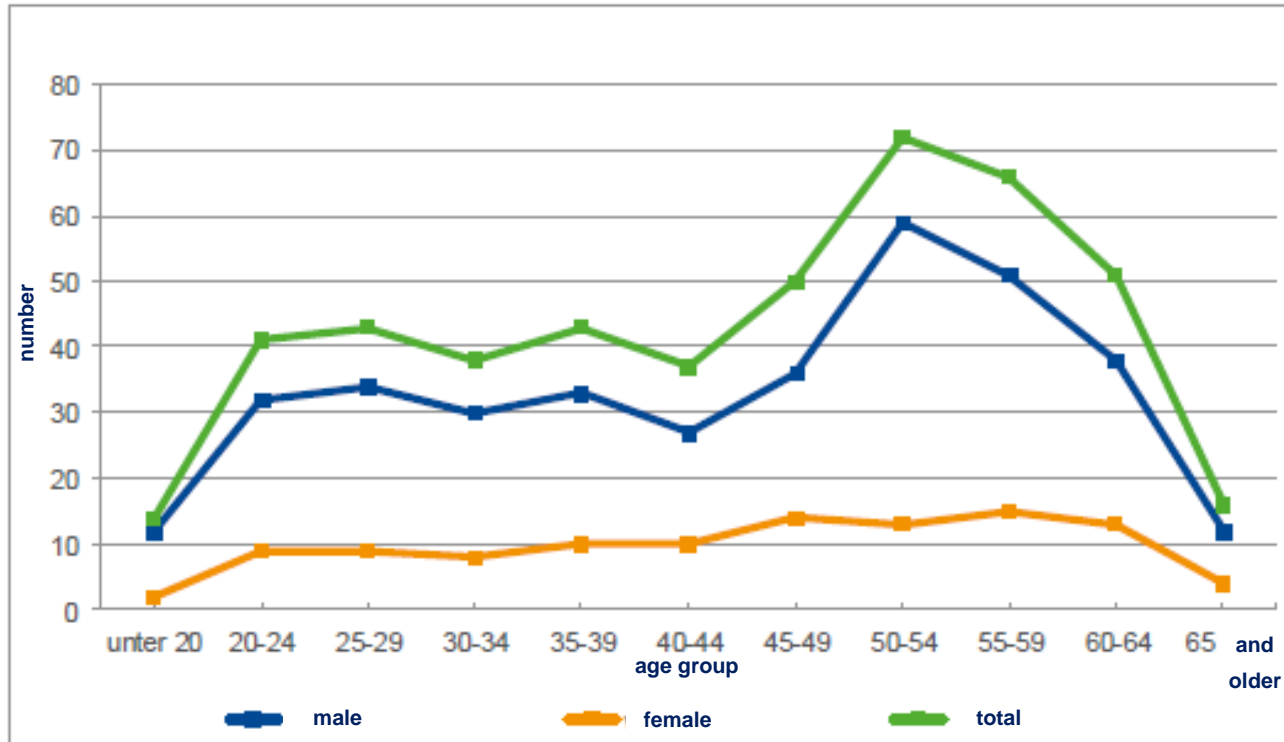
Gender distribution of work accidents 2015

Accident Type	male	female	total
work accident (no road)	292	37	329
work accident (traffic acc.)	81	8	89
on mission acc. (no road)	4	1	5
on mission acc. (traffic acc.)	40	7	47
itinerary acc. (no road)	9	4	13
itinerary acc. (traffic acc.)	243	92	335
total	669	149	818
BG`s	605	131	736
Public sector acc. insurance	64	18	82

Age distribution of WRR accidents: injured, new pensions, killed 2015 (BG + UK)



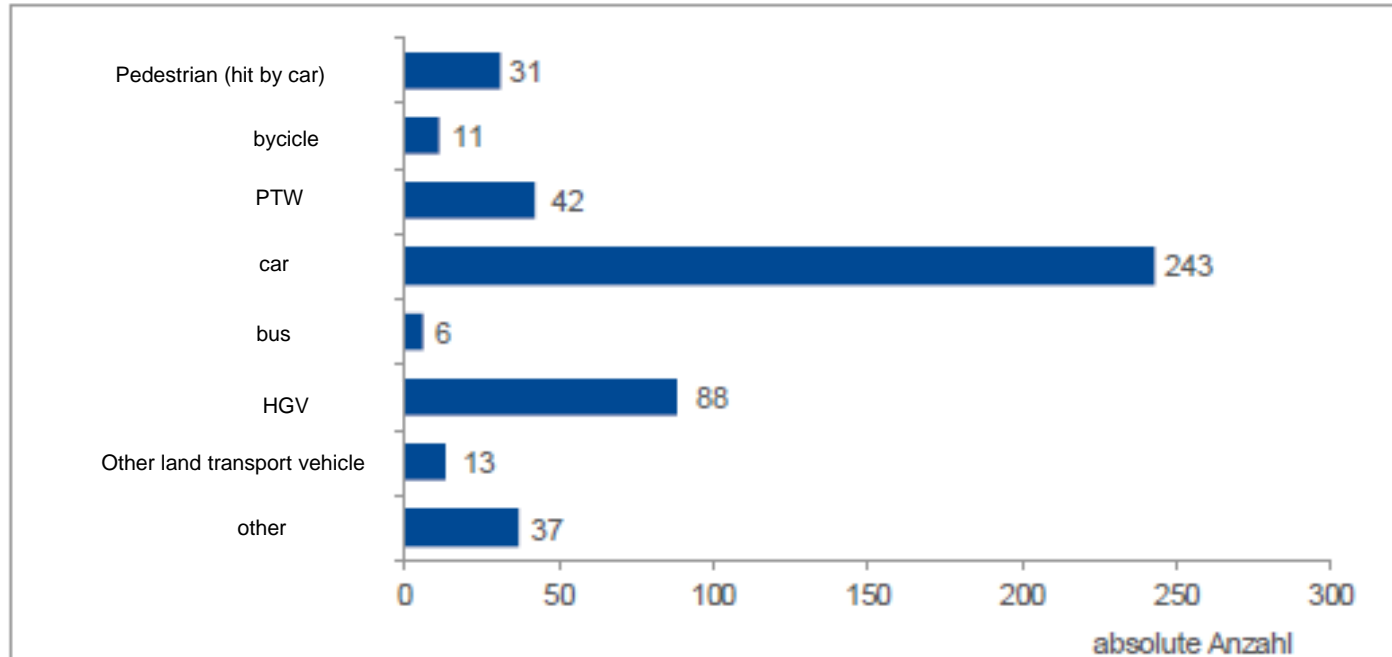
Gender and age distribution of WRR-accidents (BG + UK)



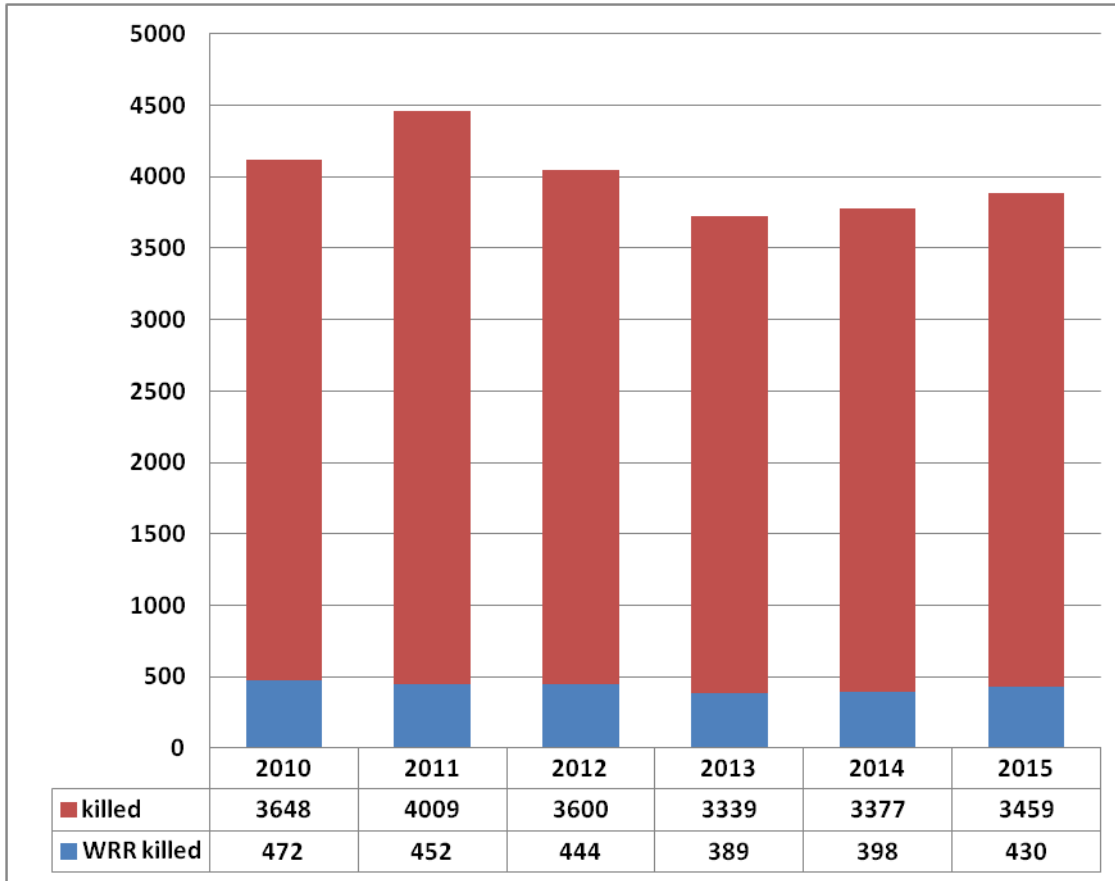
Accidents per road user type 2015

transport mode	pedestrians	drivers	car occupants	no details	total
bicycle	235	22.151	45	152	22.583
mot. two-wheeler	29	8.698	29	54	8.810
car	1.590	64.825	2.688	845	69.948
bus	15	594	836	0	1.445
HGV	132	4.688	408	38	5.266
tram/rail	34	92	137	0	263
other	122	2.802	174	182	3.284
other accidents	4.796	14.605	571	3.295	23.267
total	6.953	118.459	4.888	4.566	134.866

WRR-accidents with killed by mode of transport 2015 (BG + UK)



Proportion of work-related killed on the road of all killed in road traffic accidents



source: Destatis, DGUV

Your journeys - WEBSITE

 **DEINE WEGE**

Sichere Mobilität im betrieblichen und öffentlichen Bereich

Wege sicher zurücklegen

→ Arbeitsweg → Dienstweg → Schulweg



www.deinewege.info

Ca. 900
Seminare/
year

Ca.
20000
Trainings/
year



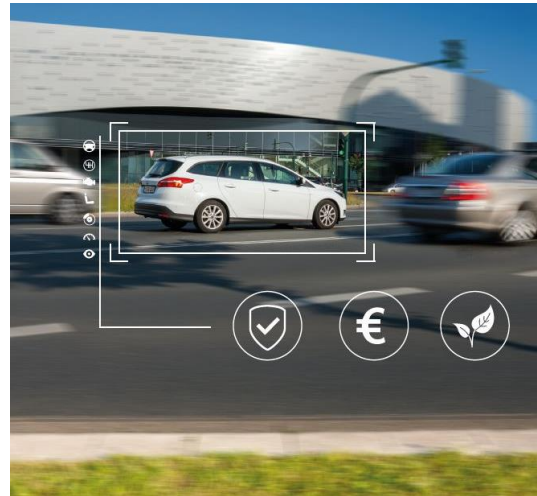
Medien- und Materialportal



Prevention of WRR accidents



Risk analysis



Eco Safety Trainings

Individual Coaching in
real traffic



Safety for cyclists

Seminars for cyclists and
pedelec users

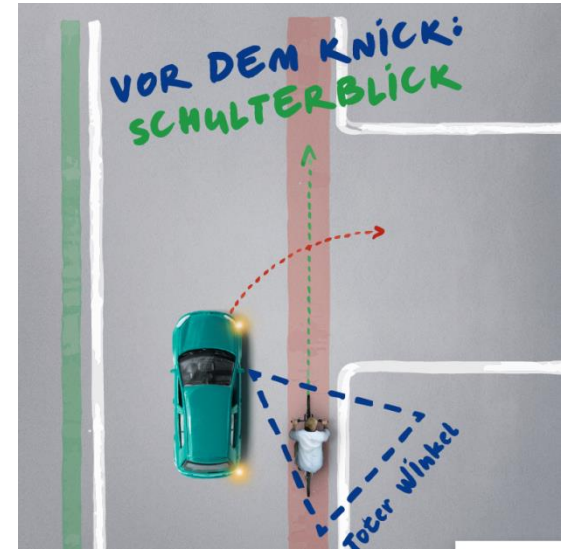
Prevention of WRR accidents



Interactive presentation desk for road safety days at companies



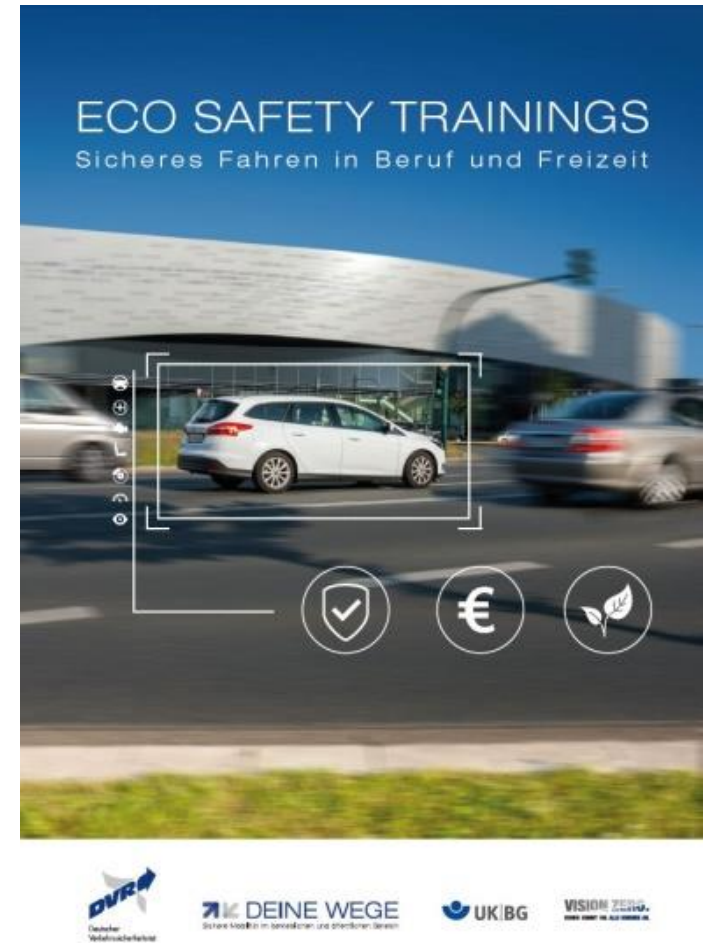
Seminars for young drivers



Different types of materials
Billboards and posters
videos, teaching material

Eco-Safety-Trainings

- Practice in real traffic
- Fuel savings
- Certified trainers
- At the work premise
- „Training on the job“
- Costs are covered by BG



Advice

- DVR adviser goes to the company
- Analysis of accidents and mobility patterns of employees
- Recommendations for measures



Seminare

- **Topics:**
e.g. distraction, fatigue, speed, causes, consequences



**Thank you very much
for your attention!**