

Driving for Work Case Study

ERVIA background

- Ervia is a commercial semi-state company with responsibility for the delivery of gas and water infrastructure services in Ireland.
- Its subsidiaries are Gas Networks Ireland (GNI), Irish Water (IW) and Aurora Telecom.
- The Ervia Fleet team has responsibility for the entire Ervia fleet which includes LCV, HGV vehicles and mobile/specialist equipment in the Ervia group.

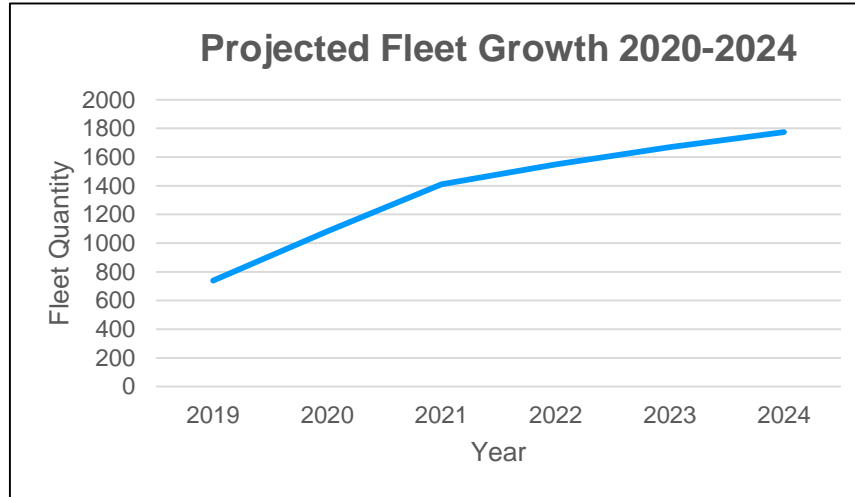


Fleet Overview

Description	Gas Networks Ireland	Aurora	Ervia	Irish Water	Total
Vans < 3.5T	88	0	0	481	569
HGV's > 3.5T	0	0	0	14	14
Jeeps (Commercial & Passenger)	10	2	3	19	34
Passenger Car/SUV	1	0	2	0	3
Mobile Equipment	25	0	0	11	36
Totals	124	2	5	525	656

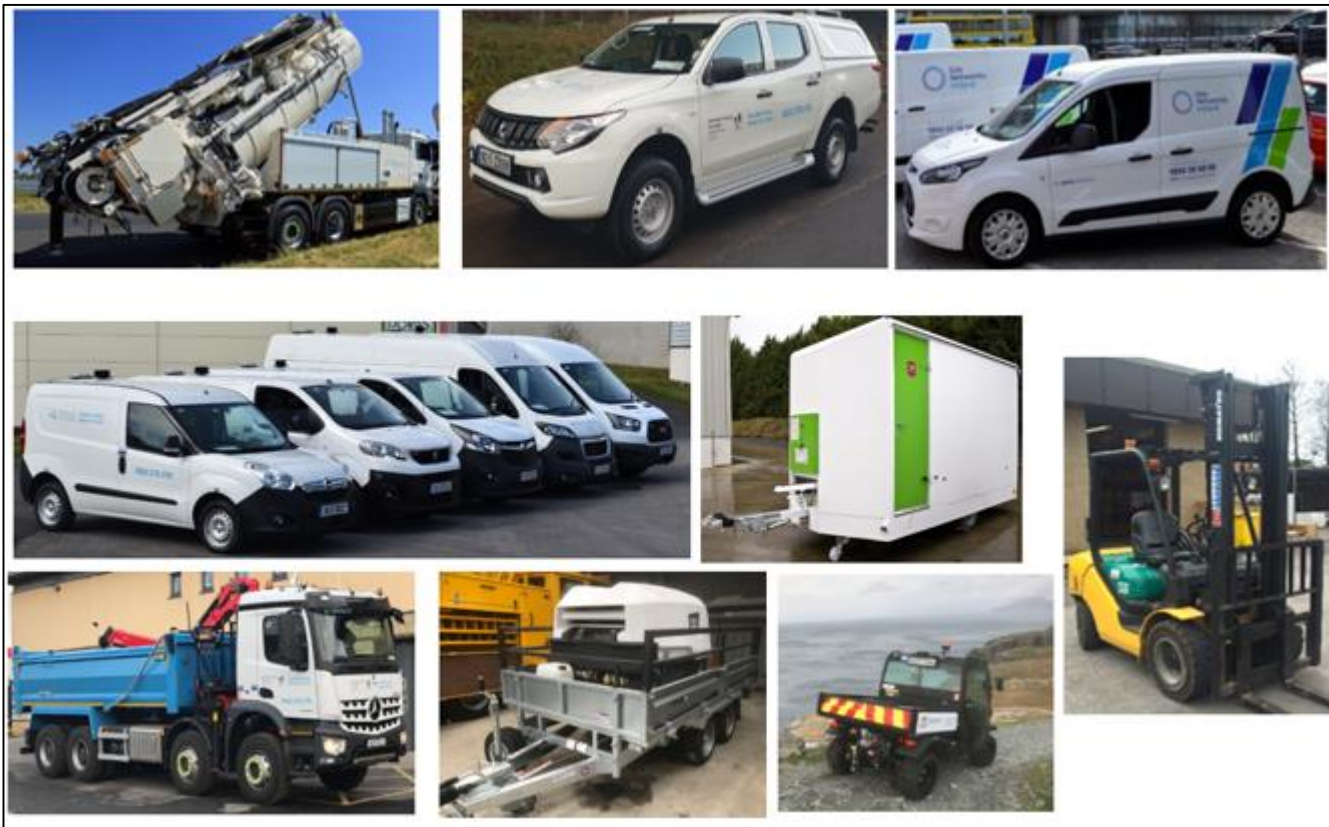
Projected Fleet Increase

- The Ervia Fleet will increase from 700 vehicles today to approximately 1,800 over the next 5 years as the existing Local Authority fleet migrates over to Irish Water.



Diverse Fleet

ervia



Ervia - Gas Networks Ireland Fleet

ervia



Ervia - Irish Water Fleet

ervia



- Adopt Best Safety Practice
- Fleet Age
- Safe Storage of Cargo
- Reversing
- Fleet Visibility
- Manual Handling
- Water Sampling
- Weight Compliance
- Telematics
- Safety Initiatives

- 13 Week Vehicle checks on LCVs
- Preventative Maintenance Inspection on HGVs
- 100% CVRT Compliance
- On-Board Vehicle Weight Sensors on trial
- Periodic Weight Checks (mobile weight pads and weigh bridge)
- Improved Safety - New Vehicle Fit-Outs
- Speed Limiter on Trial
- Reverse Cameras (Backeye 360 on larger fleet) & parking Sensors with audible warning alert
- **Chapter 8** Chevrons on rear of vehicle (**retroreflective and enhanced conspicuity**)

- Decals Incorporating comprehensive safety labels
- Safety Bulletins (sample safety briefing 2018) (Work Safe / Home Safe Culture) e.g Severe Weather
- Hazcon reporting (Company wide safety reporting system)
- Vehicle Defect books
- Daily walk around training – Classroom and practical demonstrations to all drivers & managers.
 - Presentations by Con O'Donohue (Retired Garda Chief Superintendent). Practical training by Orangeworks
- Vehicle Risk Assessments carried out by Internal H&S
- Ergonomic Assessments carried out when required
- Severe Weather Planning (provision of 4WD vehicles) - 44% of GNI Fleet
- Training provided to all staff e.g Advanced Driver, 4WD, Severe weather etc.

Ervia Vehicle Replacement Policy in Place

- Vehicles replaced with fit-for purpose fleet incorporating principles of best practice in design and functionality

• Heavy Commercial Vehicles	10-12 years or 500,000 Km
• Panel Vans (<= 3,500 Kg GVW)	6 years or 240,000 Km
• Car Derived Vans	5 years or 200,000 Km
• Commercial 4 x 4	5 years or 250,000 Km
• Passenger 4 x 4	4 years or 160,000 Km
• Company cars	3 years or 120,000 Km



Old



New



Safe Storage of Equipment and Materials

- **Improved Vehicle Fit-Out**

- Photos below show typical van fit-out pre and post Ervia Van Rollout



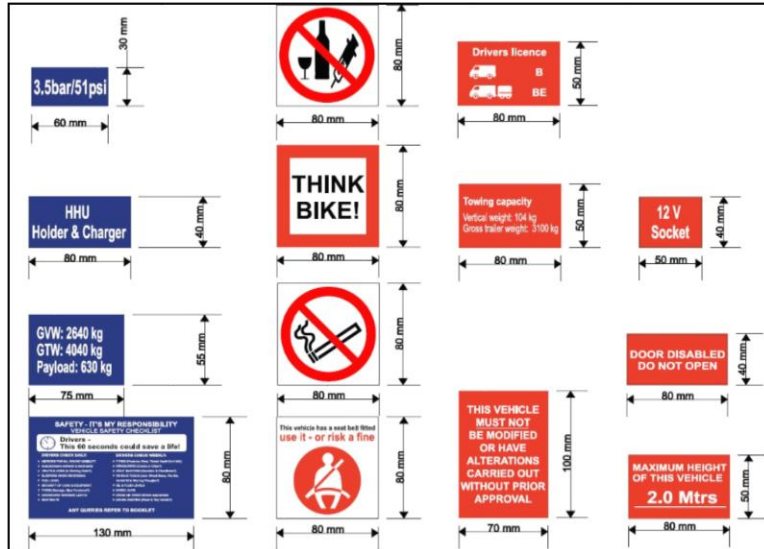
Enhanced Fleet Safety

- Installation of reversing cameras and rear step complete with parking sensors
- Hi-vis conspicuous rear step has detectable section for tow-bar.
- Grab handles also installed adjacent to all doors to aid safe access & ingress.



Fleet Visibility

Enhanced vehicle branding incorporating **chapter 8 requirements** and vehicle safety information such as tyre pressures, load capacities, driver safety check reminders, vehicle height, “think bike”, wear seatbelt, no smoking etc. Also, flashing LED lights incorporated into front vehicle grill as well as roof mounted beacon.



Manual Handling

Equipment installed to eliminate manual handling – tail-lifts, retractable slide-trays (on 4WD Pickups), wheel chair lifts. Risk assessments have been completed by HSQE.

Manual handling
Improvement –
no reaching or
bending of back



Bespoke
manual
handling
removal

•Bespoke Irish Water Sampling Van

- Ensures compliance with ISO 17025 (Water Sampling Laboratory Analysis)
- Helps maintain Biosecurity and comply with the Habitats Directive
- Refrigerated Unit temperature remotely monitored and is equipped with solar panel auxiliary battery charging
- Replaces transport of wastewater samples in private cars
- Mobile laboratory been planned



Weight Compliance

Periodic on-site vehicle weight checks using in-house weigh bridge (or portable weight plates for off-site testing).



Weight Compliance continued

- Weight reduction carried out on overweight fleet (use aluminium racking instead of steel)
- Regular weight-compliance spot checks conducted

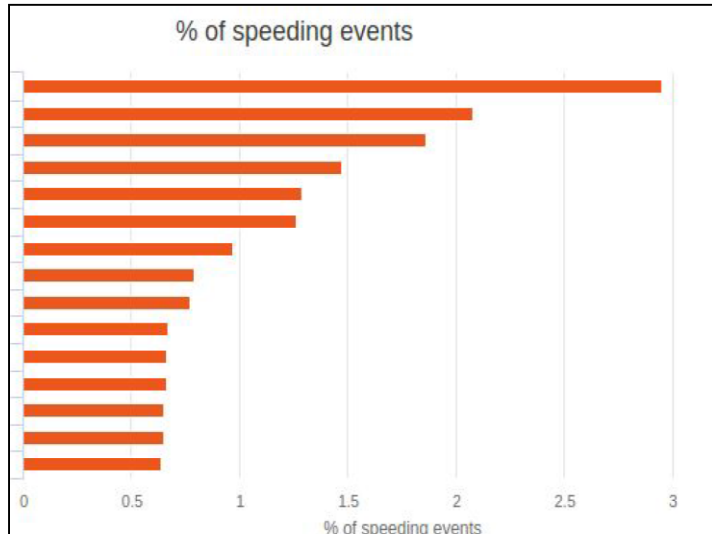


Old



New

Telematics is fitted to all vehicles primarily as a fleet management tool and also to monitor driver behaviour and advise on improvements where appropriate. The following is an example of reports currently available:



Speed Km/h	Road Limit Km/h	% over limit	Date
97	50	94	2019-06-24 07:24:38
96	50	92	2019-06-24 08:08:31
95	50	90	2019-06-28 09:04:03
92	50	84	2019-06-29 12:20:21
92	50	84	2019-06-27 23:21:48
89	50	78	2019-06-25 08:24:01
106	60	77	2019-06-24 08:04:06
88	50	76	2019-06-29 08:16:11
88	50	76	2019-06-28 14:33:57
88	50	76	2019-06-25 16:26:06
88	50	76	2019-06-25 10:58:24
87	50	74	2019-06-28 11:55:26
87	50	74	2019-06-28 09:03:44
87	50	74	2019-06-28 13:46:07

Sturdy IQ - Variable Speed Limiter currently on Trial (Intelligent Speed Adaptation - ISA)





171 Course Participants Attended 11 Training No. Courses

- Driver Licence Upgrade
- Induction To Operating a Fleet Vehicle
- Vehicle Familiarisation
- Forklift & Equipment Familiarisation
- LCV Advanced Driver Training
- 4X4/AWD Driver Training
- Forklift Operators Training
- Tail Lift Operation Training

186 Course Participants Attended 14 No. Training Courses

- Driver Licence Upgrade
- Vehicle/ Equipment Familiarisation
- HCV Advanced Driver Training
- 4X4/AWD Driver Training
- Tipper Body & Chassis Mounted Crane
- ATV Driver Training
- High Pressure Water Jetting Safety Awareness Course
- Vehicle & Equipment Induction - Technical Training
- Onsite Recycler Jetter/Recycler Safety Awareness course

27 Course Participants Attended 7 No. Training Courses

- Vehicle & Equipment Familiarisation
- LCV & HCV Advanced Driver Training
- 4X4/AWD Driver Training
- Tail Lift Operation Training
- Vehicle induction - Technical Training

6 Courses Participants Attended 1 No. Training Course

- 4X4/AWD Driver Training



Full package provided to all operators before vehicle handover

- Vehicle familiarisation
-



Standard Features On Vans (Gas Networks Ireland)

ervia



Safety Features

- Full Steel Bulkhead
- Twin Air Bags
- Blue Tooth
- Reverse Camera
- Reverse Alarm
- Rear Parking Sensors
- Front/Rear Fog Lights
- 'In-Vehicle' aluminium shelving solution to ensure equipment is carried safely
- Front & Rear LED Warning Lights (Orange)
- Chevrons on Rear Doors
- Hand Wash Unit
- Soap/Paper Towel Dispensers
- First Aid Kit
- Fire Extinguisher
- HHU Charger (Cargo area)
- Safety Stickers/Decals
- On-Board Weight Monitoring System (Large Vans Only)
- Rotating Air Vent
- Warning triangle

Sortimo Modular Aluminium Racking installed 2018

Driver Ergonomics and Comfort

- Air con
- Lumbar Support
- Vinyl Seats
- Arm Rests
- Electric Driver & Passenger Side Windows
- Electric Driver & Passenger Side Mirrors
- Blind Spot Detection
- Cruise Control
- Lane Departure Assist will be specified in future tenders

Standard Features On Vans (Irish Water)



Safety Features

- Full Steel Bulkhead
- Twin Air Bags
- Blue Tooth
- Reverse Camera
- Reverse Alarm
- Rear Parking Sensors
- Front/Rear Fog Lights
- 'In-Vehicle' timber shelving solution to ensure equipment is carried safely
- Front & Rear LED Warning Lights (Orange)
- Chevrons on Rear Doors
- Hand Wash Unit
- Soap/Paper Towel Dispensers
- First Aid Kit
- Fire Extinguisher
- HHU Charger (Cargo area)
- Safety Stickers/Decals
- On-Board Weight Monitoring System (Large Vans Only)
- Rotating Air Vent
- Warning triangle

Standard Features On 4WD's



Safety Features

- Full Steel Bulkhead
- Twin Air Bags
- Blue Tooth
- Reverse Camera
- Reverse Alarm
- Rear Parking Sensors
- Front/Rear Fog Lights
- 'In-Vehicle' timber shelving solution to ensure equipment is carried safely
- Front & Rear LED Warning Lights (orange)
- Chevrons on Rear Doors
- Hand Wash Unit
- Soap/Paper Towel Dispensers
- First Aid Kit
- Fire Extinguisher
- HHU Charger
- Safety Stickers/Decals
- Rotating Air Vent (Canopy Option Only)
- Warning Triangle

Options Available

- Tonneau Cover
- Roller Cover
- A-Bar
- Roof-Bar
- Side Steps

- **Fuel Saving Initiatives;**

- Tender specifications now incorporate best principles of green procurement.
- Whole-life vehicle cost factored into tender evaluation, including fuel efficiency and emissions.
- Aluminium as opposed to steel modular shelving.
- Extra marks awarded for payload capacity vs gross vehicle weight.
- Based on whole life vehicle costs – comparing most recent vehicles procured vs least fuel efficient vehicles - **€154K saving over lifetime in terms of fuel savings.**
- Telematics – incorporates a fuel module verifying vehicle location at time of fuel card transaction.
- Based on actual data comparing old vs new fleet that is in place over the past year, there has been **€70K in savings for 350 LCV's (8.5%).**
- Alternative fuels – Ervia currently procuring 2 No. CNG large vans in 2019. 1 Hybrid SUV already in place and is been benchmarked against Diesel equivalents already in place in terms of actual real-whole life running costs. Ervia also currently trailing electric vans through its GNI subsidiary

Description	Quaretly Savings	Annual Savings
Litres (l)	13,917.58	55,670.34
Cost (€)	€ 17,675.33	€ 70,701.33

- **Insurance Claims – Note IW Fleet only in existence since 2017 and is ramping up to approximately 1,700 vehicles over next 4 years.**
- **Shift in high speed-high consequence -> low speed-low consequence**

