

ROAD SAFETY PERFORMANCE INDEX ANNUAL CONFERENCE AND AWARD CEREMONY 2024

ROAD INFRASTRUCTURE SAFETY MANAGEMENT (RISM)

Mircea Ionescu
DG MOVE - Unit C.2 –
Road Safety

Brussels, 19 June 2024

ROAD INFRASTRUCTURE SAFETY MANAGEMENT

Directive 2008/96/EC + Directive (EU) 2019/1936

ECA findings and recommendations on RISM

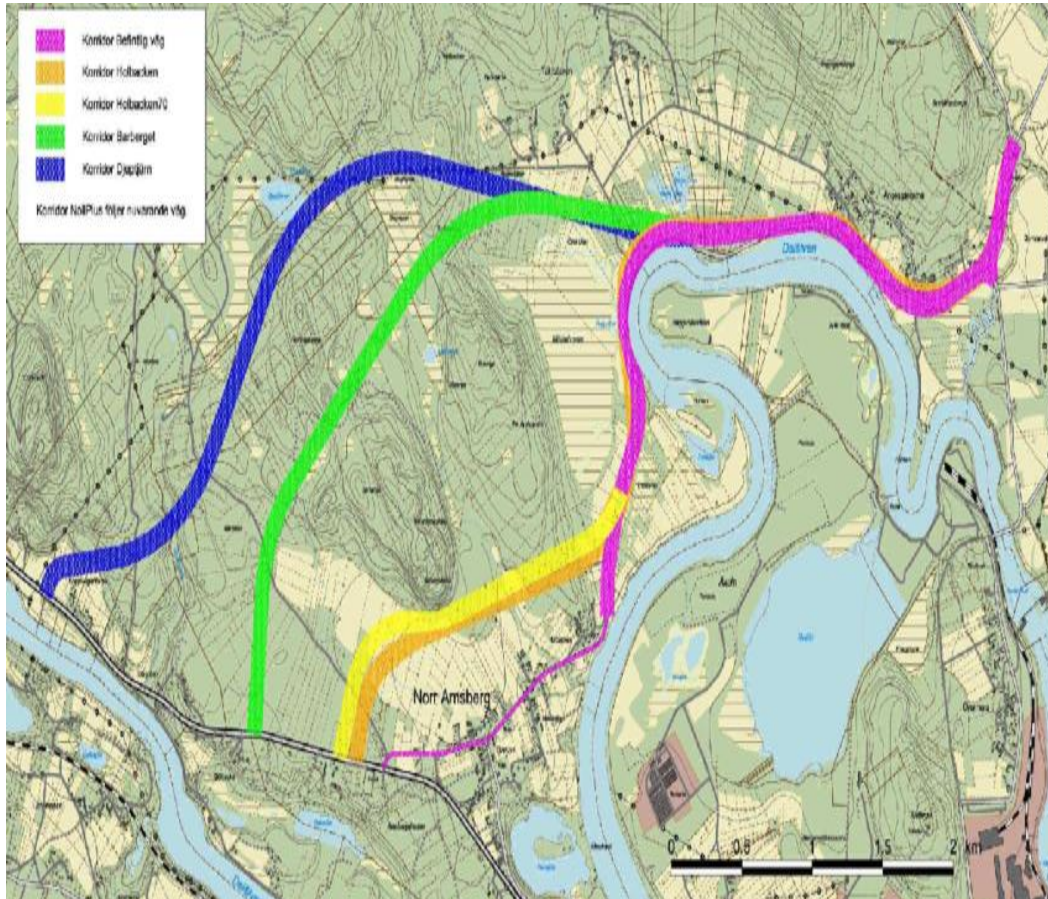
Forgiving roads and roadsides, self-explaining and self-enforcing roads, quality and safety for VRU infrastructure

Scope: *high speed roads*

- (2008) TEN T Network
- (2019) Motorways
- (2019) Primary roads
- (2019) EU funded Interurban roads



Road Safety Impact Assessment



- Strategic comparative analysis of a new project on the safety of the road network
- During (pre)feasibility study
- **VRU**

Road Safety Audits

- ✓ Technical safety check of the design characteristics of project
- ✓ **VRU**
- ✓ Every stage: draft design ... early operation

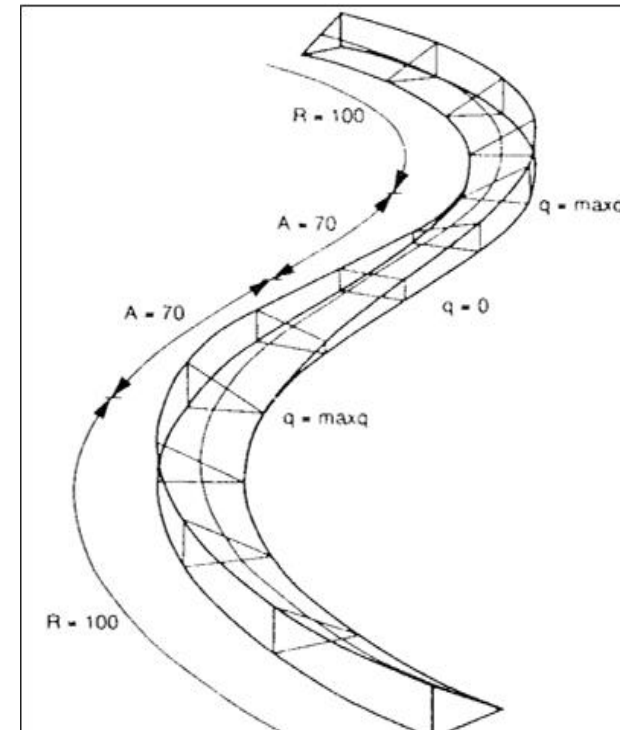
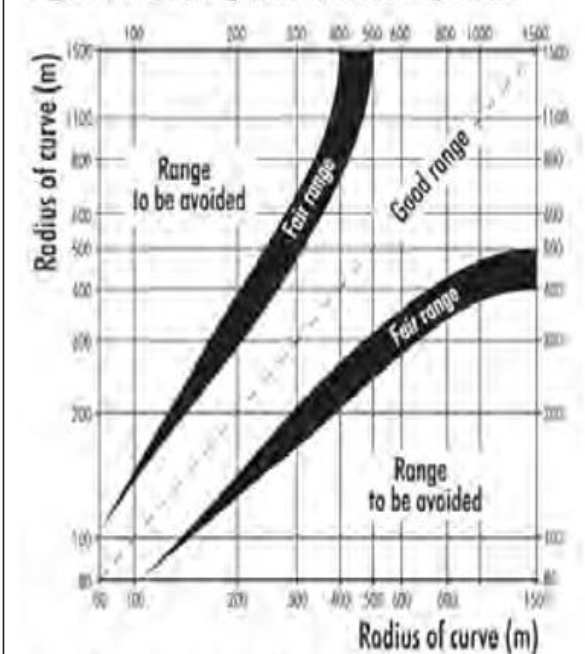


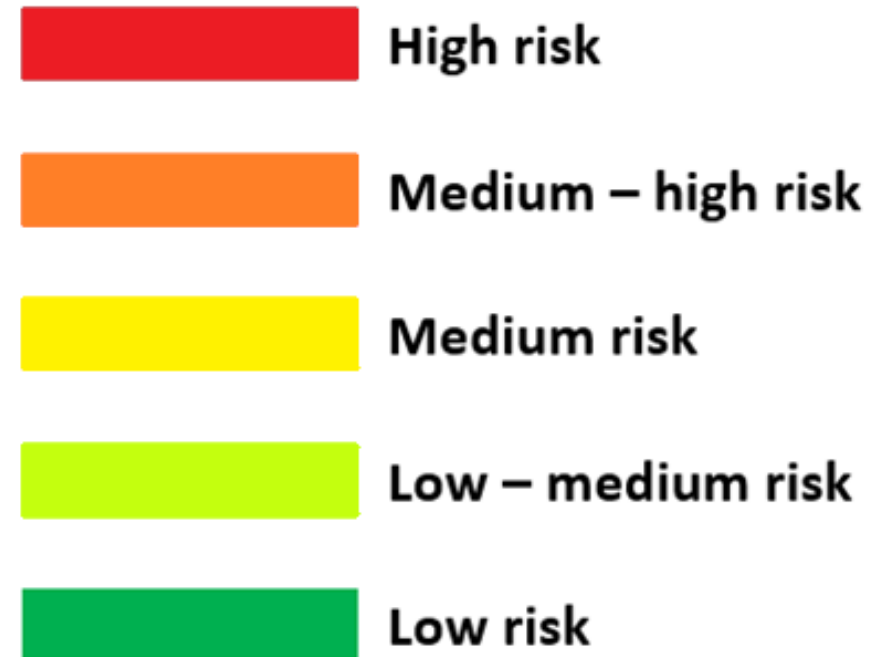
Figure HA-9 Tuning radii in curve sequences



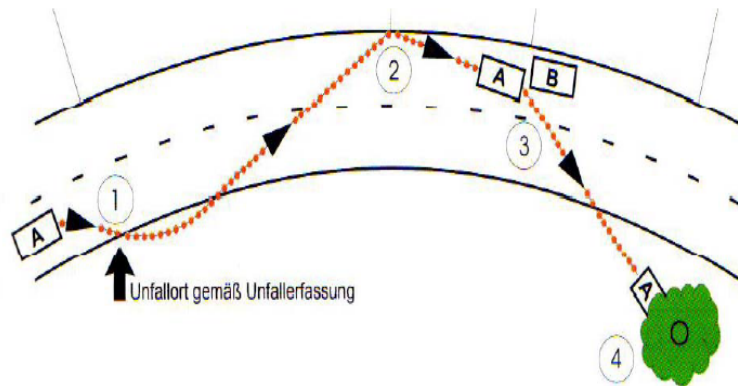
Source: European Commission, Road Safety Audit (2009)

Network-wide road safety assessment

- ✓ Evaluates the risk of every section, based on:
 - road features (in-built safety)
 - crash statistics
- ✓ Minimum 3 categories classification of sections
- ✓ **! Worst sections - follow up:**
 - **targeted inspections**
 - **remedial measures**



Location of accident



Reference: M Uko, 2012

- 1 - point with a road deficit, that had caused the driving mistake
- 2 and 3 - point of collision
- 4 - position of vehicle, which is normally recorded by the police officer

Targeted Road Safety Inspections

- ✓ On high risk and dangerous sections
- ✓ Can question the design principles
- ✓ Require remedial actions from the road manager

*European Court of Auditors
Special report 2024*

Reaching EU road safety objectives: Time to move up a gear

RISM Directive does not apply to road infrastructure associated with the most of fatalities in 2020, namely:

- **(i) urban areas and cycle paths**
- **(ii) non-primary roads which have not received EU funding.**



Increase the focus on the causes of accidents and introduce further guidance covering all risk areas

SUB-GROUP 3 TO THE EXPERT GROUP ON ROAD INFRASTRUCTURE SAFETY (EGRIS)

Directive 2008/96/EC + Directive (EU) 2019/1936

Art 4(6) - The Commission shall provide guidance for the design of 'forgiving roadsides' and 'self-explaining and self-enforcing roads' in the initial audit of the design phase, as well as guidance on quality requirements regarding vulnerable road users.

*Such guidance shall be developed in **close cooperation with Member State experts.***

EUROPEAN DECLARATION ON CYCLING (C/2024/2377)

*EU Council, EP and EC commit to: **Creating more and better cycling infrastructure***

Scope of the Guidance

Roads mainly used by powered vehicles



Quality of walking and cycling infrastructure



PRM friendly

Thank you