

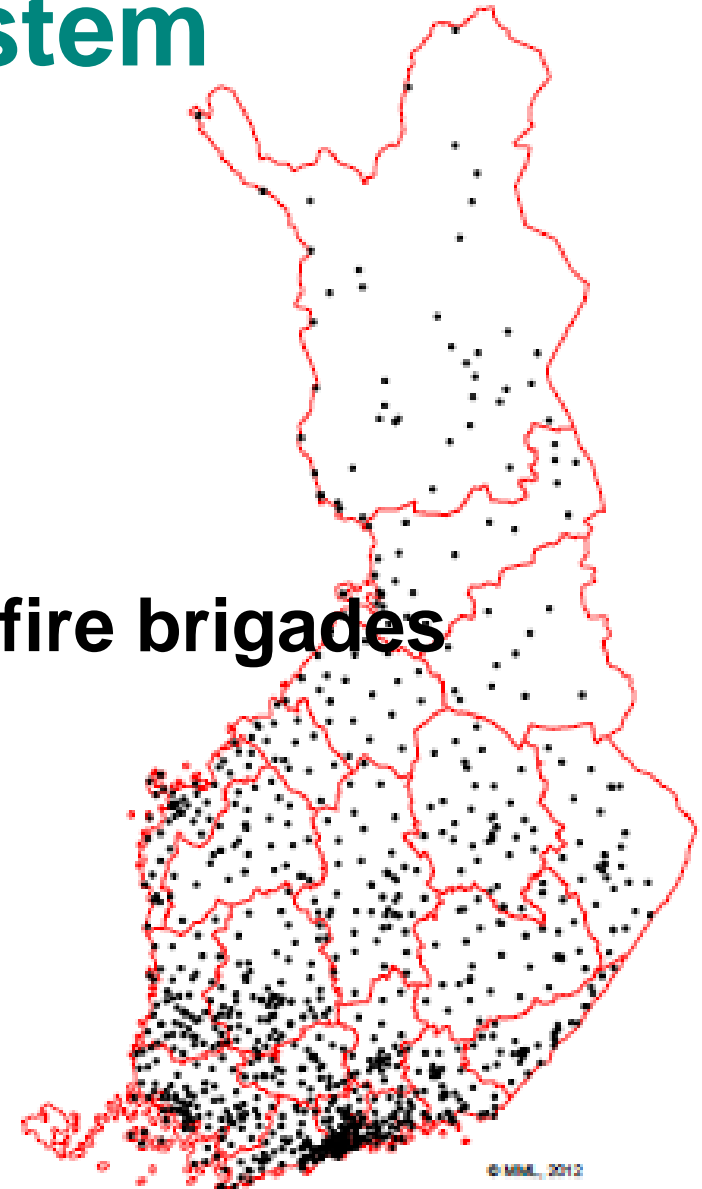


Rescue from a road collision

Taito Vainio, Finnish Ministry of the Interior

Rescue service system

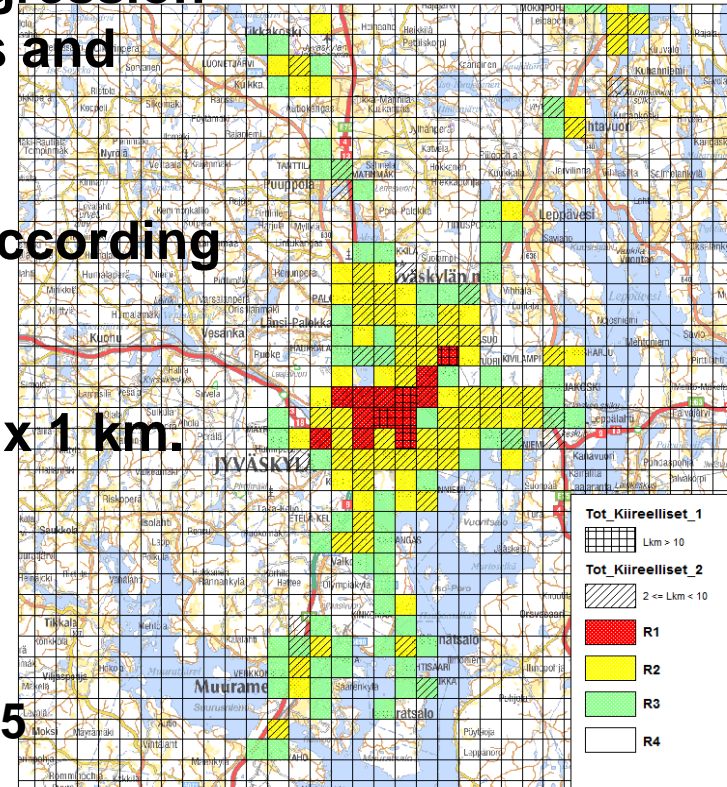
- **22 rescue service regions**
- **60 fulltime fire stations**
- **712 voluntary fire brigades**
- **20 industrial and institutional fire brigades**



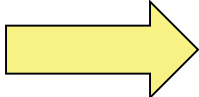
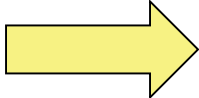
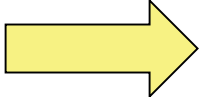
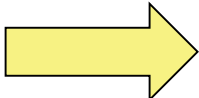
Risk assessment

- The whole country is divided into risk classes. Risk classes are based on a risk level which is determined by the regression model. Regression model is based on number of inhabitants and building square meters.
- Regression model has been calculated according real house fires.
- Prognosis for risk level in a square 1 km x 1 km.

- | | |
|-----------------------------------------|-------------------------------------|
| <input type="checkbox"/> Risk class I | Risk level ≥ 1 |
| <input type="checkbox"/> Risk class II | $0,25 \leq \text{Risk level} < 1$ |
| <input type="checkbox"/> Risk class III | $0,1 \leq \text{Risk level} < 0,25$ |
| <input type="checkbox"/> Risk class IV | Risk level $< 0,1$ |



RESPONSE TIME

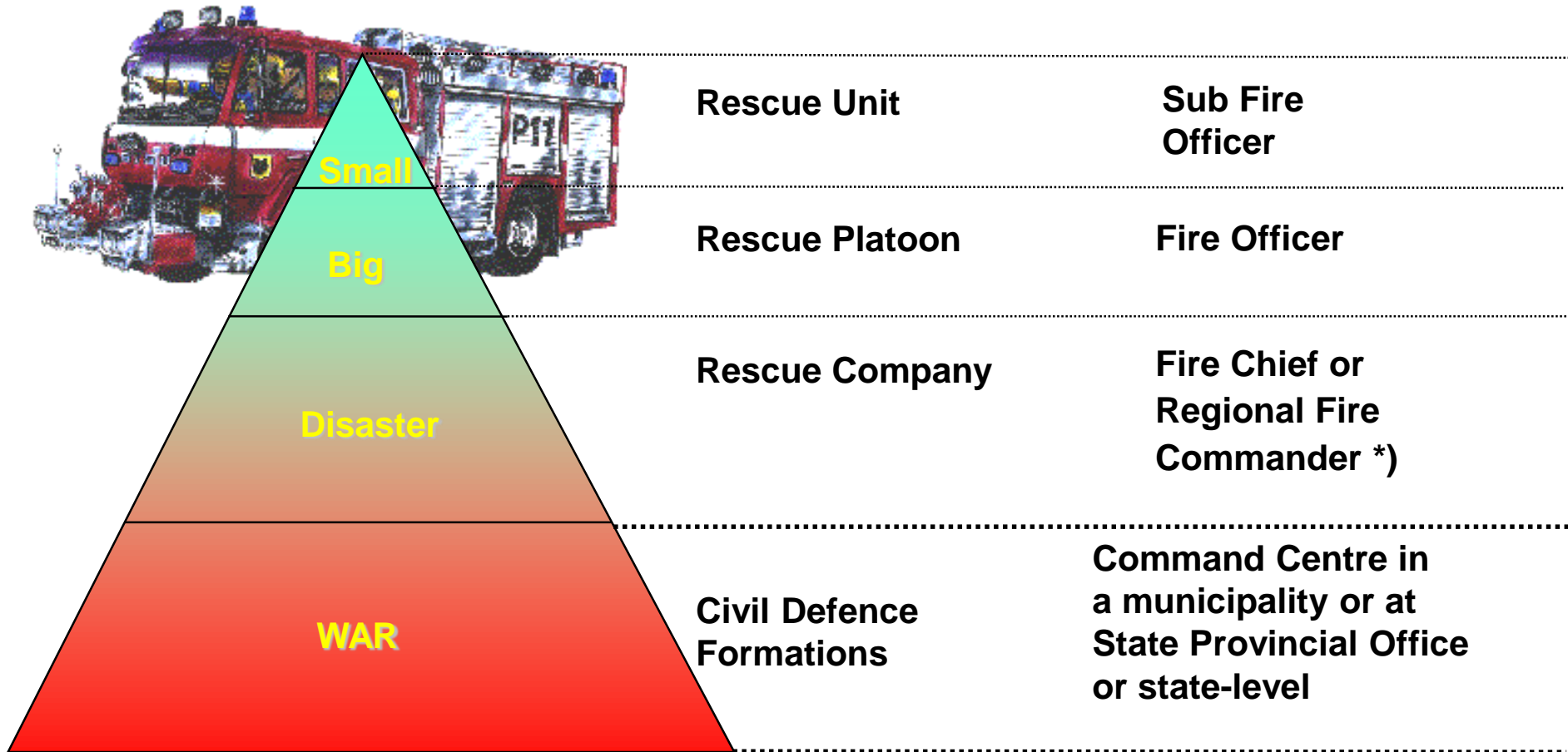
Risk class 1		6 minutes (the first unit) 13 minutes (1+3 fire fighters) 20 minutes(platoon)
Risk class 2		10 minutes (the first unit) 16 minutes (1+3 fire fighters) 30 minutes(platoon)
Risk class 3		20 minutes (the first unit) 24 minutes (1+3 fire fighters) 30 minutes(platoon)
Risk class 4		No response time defined

Command of Rescue Operations in Finland

Size of the Accident

Formations

Leader



*) State Provincial Offices or The Department for Rescue Services at the Ministry of the Interior can give orders or nominate a new leader

A Unique Finnish Operating Model for Emergency Response Centres

112



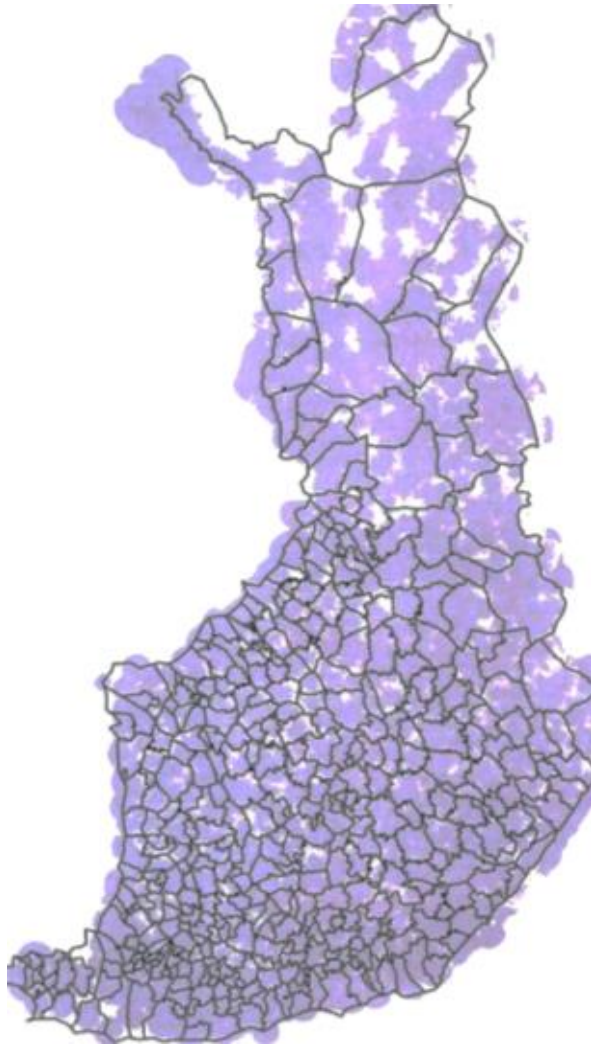
EU's emergency number, 112, helps in all urgent emergencies

An integrated all authority state - run organization receives all urgent emergency calls

A common TETRA authority radio network combines all authorities

All needed authorities are alerted at the same time from the same location.

VIRVE TETRA-Network (authority radio network)



Fire- and Rescue

33%



Police

20%



Military

15%

- Social- and healthservices
- Frontier guard
- Customs

- 112-centres
- Security companies
- Energy production and -transport

The rescue chain

Observation →



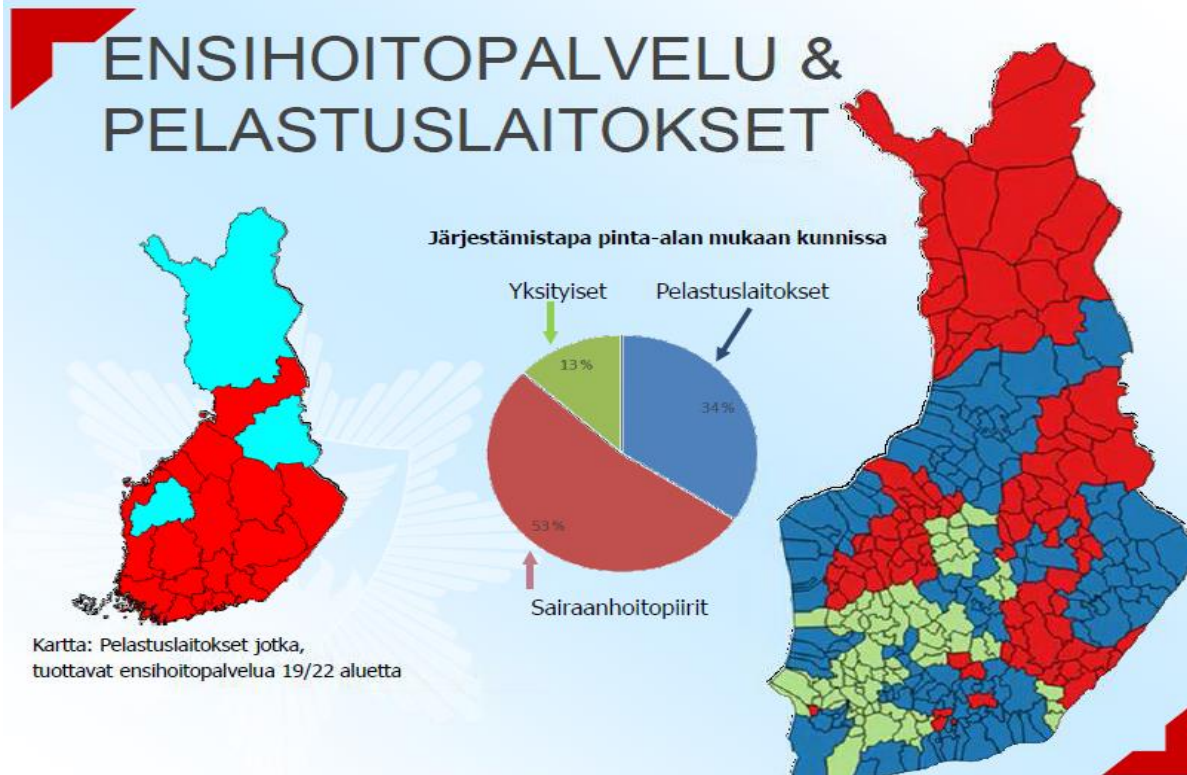
← Emergency Call

Alarm



Response

- The general leader in all accident situations is the rescue leader
- The emergency medical services is produced by the hospital districts themselves, rescue services and private companies





Thank You!