



Debate 1: Structure of EMS systems

Presentation of the Luxembourg
Rescue Services and its reform



LE GOUVERNEMENT
DU GRAND-DUCHÉ DE LUXEMBOURG
Administration des services de secours



European Transport Safety Council





- 1. Grand Duchy of Luxembourg
- 2. Reform of the rescue services
- 3. C.S.U. 112 – National Emergency Contact Point
- 4. National intervention and training centre



➤ 1. Grand Duchy of Luxembourg

Grand Duchy of Luxembourg



LE GOUVERNEMENT
DU GRAND-DUCHÉ DE LUXEMBOURG



- Official designation: Grand Duchy of Luxembourg
- Form of government: Representative democracy in the form of a constitutional monarchy
- Chief of State: H.R.H. Grand Duke Henri
- National language: Luxembourgish (Lëtzebuergesch)
- Administrative languages: French, German, Luxembourgish
- Currency: Euro
- Capital: Luxembourg
- Administrative divisions: 12 cantons, 105 municipalities

Territory



LE GOUVERNEMENT
DU GRAND-DUCHÉ DE LUXEMBOURG

- Total area of the Grand Duchy: 2586 km²
agricultural and wooded area: 85.1 %
- Dimensions North-South: max. 82 km
East-West: max. 57 km
- Altitudes: max. 560 m
min. 130 m
- Temperature: min. - 10.1 °C (January)
max. + 32.7 °C (July)



➤ Total population:	599.798
	47.7 % Foreigners
	> 180.000 Frontier workers
Luxembourg-city:	114.300
Esch/Alzette:	34.400



➤ 2. Reform of the rescue services



- New legal framework :

Law of the 27th of march 2018 organising the civil security and creating a « *Corps Grand-Ducal d'Incendie et de Secours* » (CGDIS)

- Public institution with a board of 16 members
(8 members nominated by ministers and
8 members nominated by the municipalities)
- Competent ministry : Ministry of Interior

Main points of the reform



LE GOUVERNEMENT
DU GRAND-DUCHÉ DE LUXEMBOURG

- Financed by the municipalities and the state (50/50)
- Professionalisation of the rescue services
- Centralisation of some departments
- A career of a professional fire fighter is created
- Measures to promote the voluntary service



➤ Personnel :

Active volunteers : 4.037

Professionals : 381 *(201 professional and volunteer)*

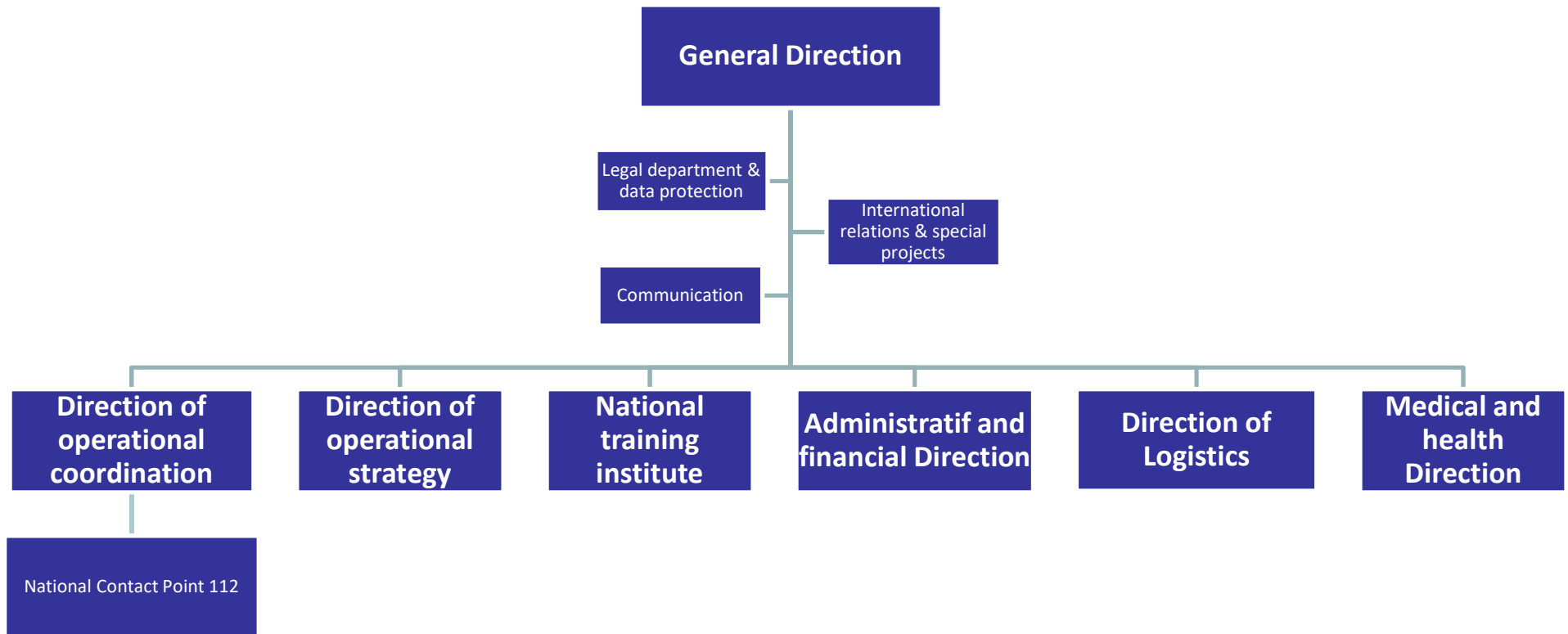
Total : 4.217

Main points of the reform



LE GOUVERNEMENT
DU GRAND-DUCHÉ DE LUXEMBOURG

➤ New structure



Main points of the reform



LE GOUVERNEMENT
DU GRAND-DUCHÉ DE LUXEMBOURG

- One institution for all public rescue services :

One institution for all the rescue services



LE GOUVERNEMENT
DU GRAND-DUCHÉ DE LUXEMBOURG

➤ Municipal fire brigades :



One institution for all the rescue services



LE GOUVERNEMENT
DU GRAND-DUCHÉ DE LUXEMBOURG

➤ Airport fire brigade



One institution for all the rescue services



LE GOUVERNEMENT
DU GRAND-DUCHÉ DE LUXEMBOURG

➤ Medical Emergency Service (SAMU)



One institution for all the rescue services



LE GOUVERNEMENT
DU GRAND-DUCHÉ DE LUXEMBOURG

➤ Civil protection units

Ambulances



Rescue brigade

One institution for all the rescue services



LE GOUVERNEMENT
DU GRAND-DUCHÉ DE LUXEMBOURG

➤ Special Units

Psychological Support Unit



Alert Group



vers. com 10/2015

One institution for all the rescue services



LE GOUVERNEMENT
DU GRAND-DUCHÉ DE LUXEMBOURG

NRBC UNIT



One institution for all the rescue services

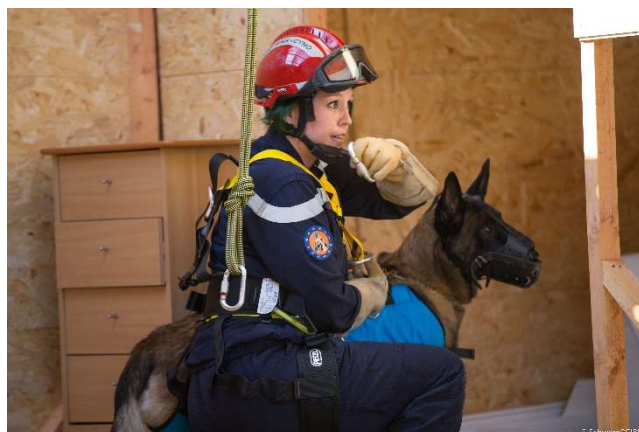


LE GOUVERNEMENT
DU GRAND-DUCHÉ DE LUXEMBOURG

Flood Rescue



Canine Rescue Unit



One institution for all the rescue services



LE GOUVERNEMENT
DU GRAND-DUCHÉ DE LUXEMBOURG

Logistic Unit



Humanitarian
Intervention Team

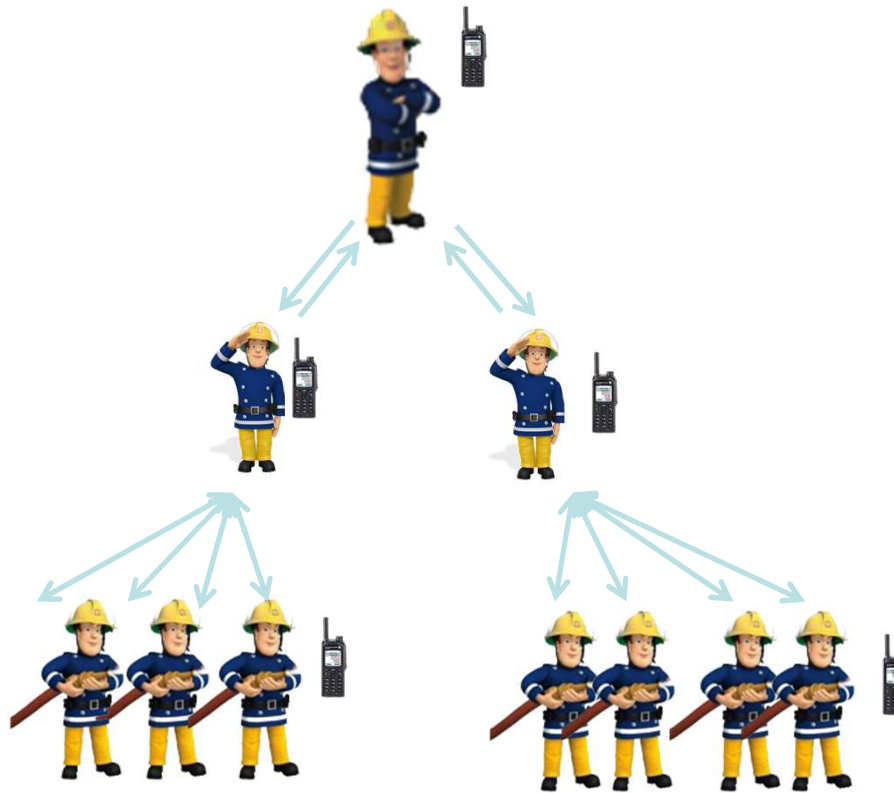


Main points of the reform



LE GOUVERNEMENT
DU GRAND-DUCHÉ DE LUXEMBOURG

- Implementation of a unified chain of command :



Chain of command



LE GOUVERNEMENT
DU GRAND-DUCHÉ DE LUXEMBOURG

➤ Operational chain of command (more hierarchical)



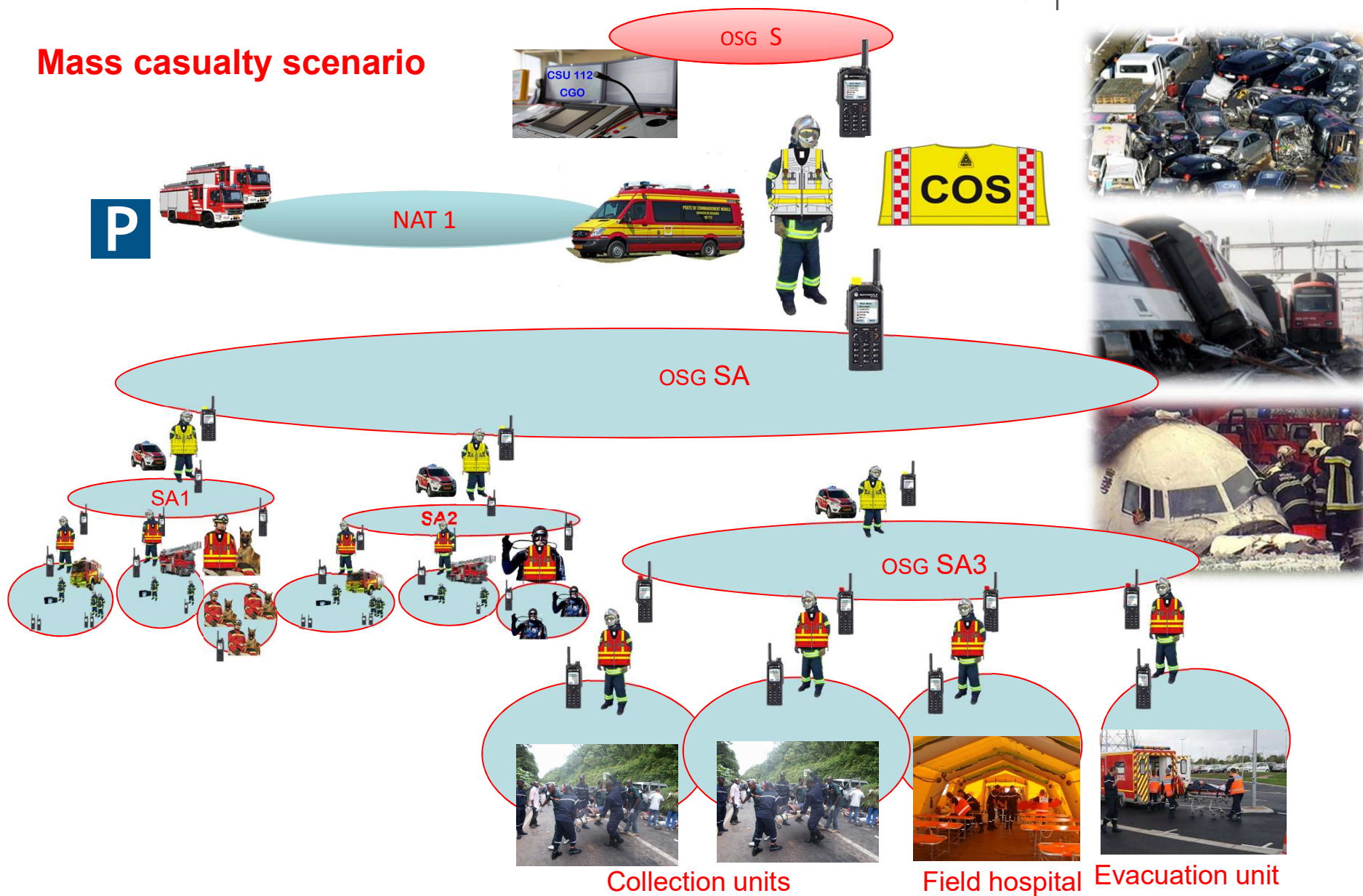
Incident Commander

Chain of command and communication



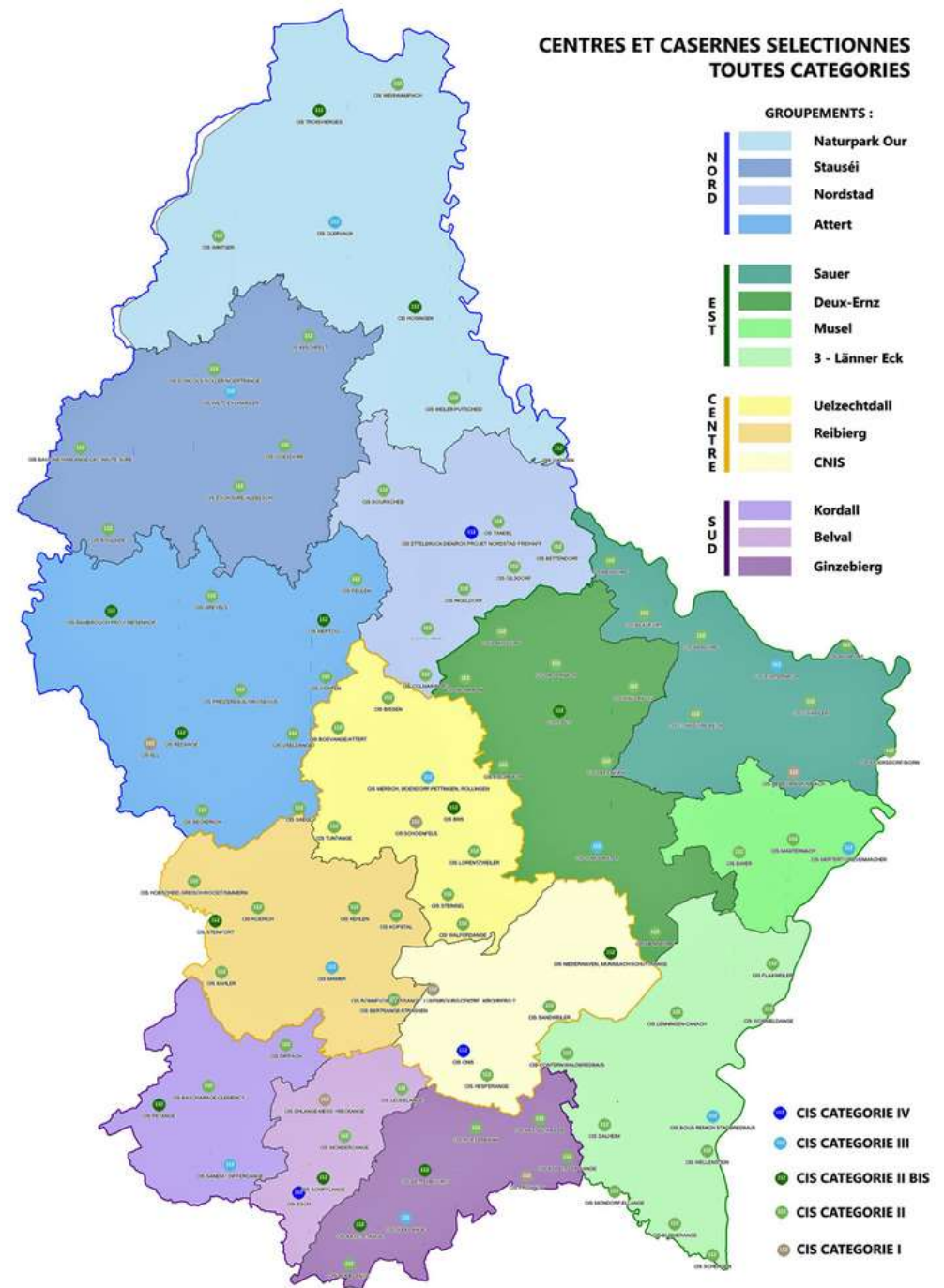
LE GOUVERNEMENT
DU GRAND-DUCHÉ DE LUXEMBOURG

Mass casualty scenario



Main points of the reform

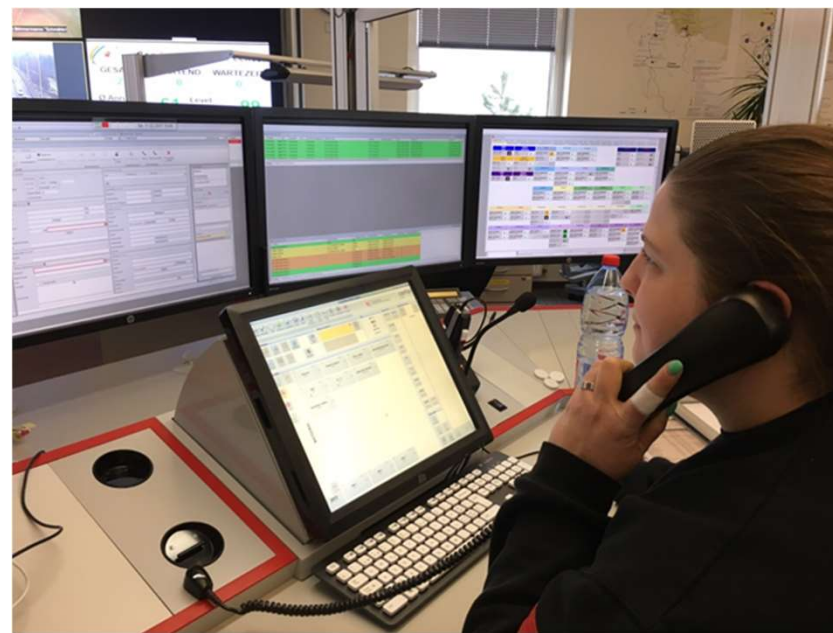
- 4 groups
- Different type of centres (categorie 1 – 4bis)





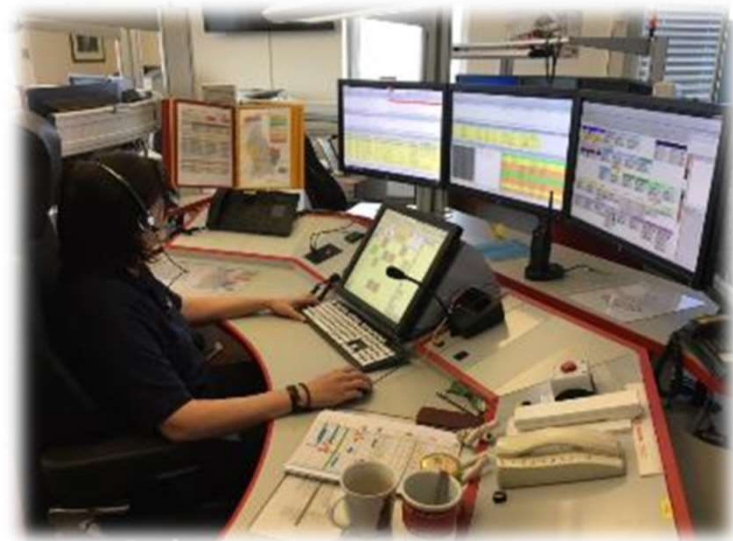
C.S.U. 112 – National Emergency Contact Point

Echternach		Mertztal		Mertztal	
AMB1-ECHEMNAC	1	AMB1-MERTZTAL	2	AMB1-MERTZTAL	2
AMB2-ECHEMNAC	2	AMB2-MERTZTAL	2	AMB2-MERTZTAL	2
Luxembourg		Luxembourg		Luxembourg	
AMB1-LUXEMBOURG	2	AMB1-LUXEMBOURG	2	AMB1-LUXEMBOURG	2
AMB2-LUXEMBOURG	2	AMB2-LUXEMBOURG	2	AMB2-LUXEMBOURG	2
Kyllburg		Kyllburg		Kyllburg	
AMB1-KYLLBURG	2	AMB1-KYLLBURG	2	AMB1-KYLLBURG	2
AMB2-KYLLBURG	2	AMB2-KYLLBURG	2	AMB2-KYLLBURG	2
Kyllburg		Kyllburg		Kyllburg	
AMB1-KYLLBURG	2	AMB1-KYLLBURG	2	AMB1-KYLLBURG	2
AMB2-KYLLBURG	2	AMB2-KYLLBURG	2	AMB2-KYLLBURG	2





- New ELS System
- 8 operational posts
- 1 backup centre with 4 operational posts





➤ 112 Calls in 2017:

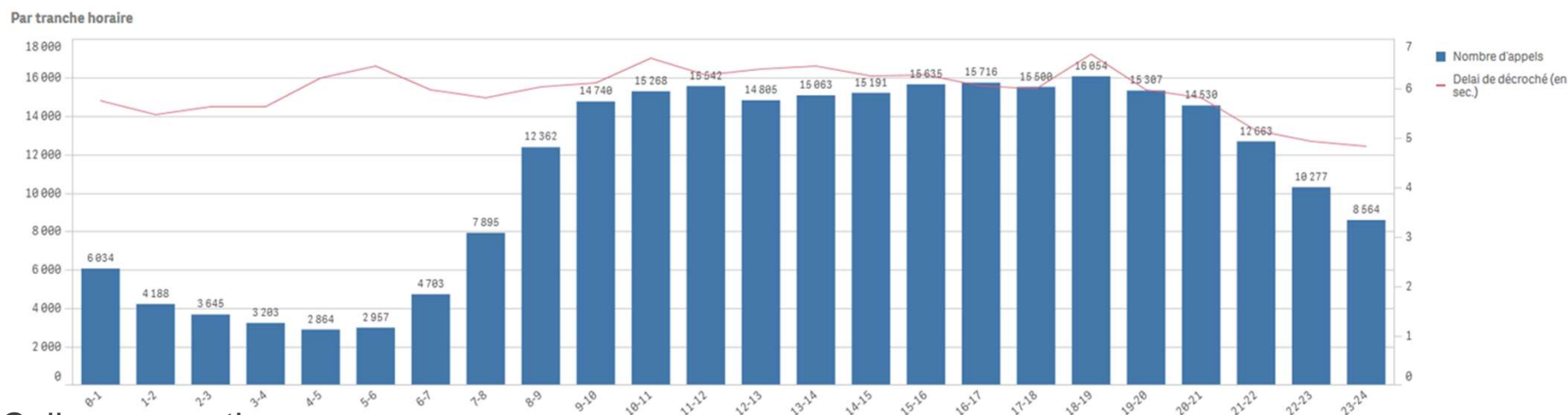
- 262.706 calls (M: 720/24h 30/h)
 - 1 emergency call every 2 minutes
- 71.152 interventions (M: 196/24h 8/h)
 - 1 emergency intervention every 7,5 minutes

2017 Statistics of 112

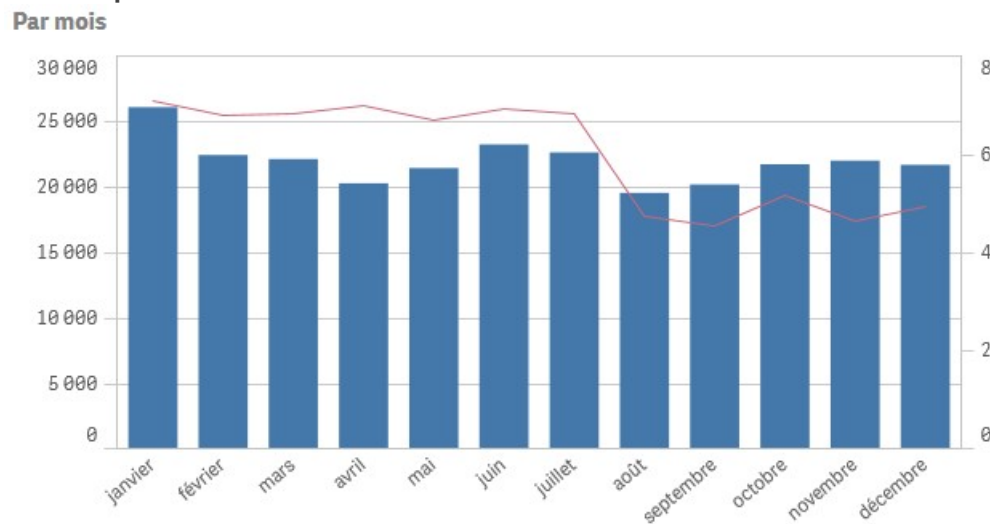


LE GOUVERNEMENT
DU GRAND-DUCHÉ DE LUXEMBOURG

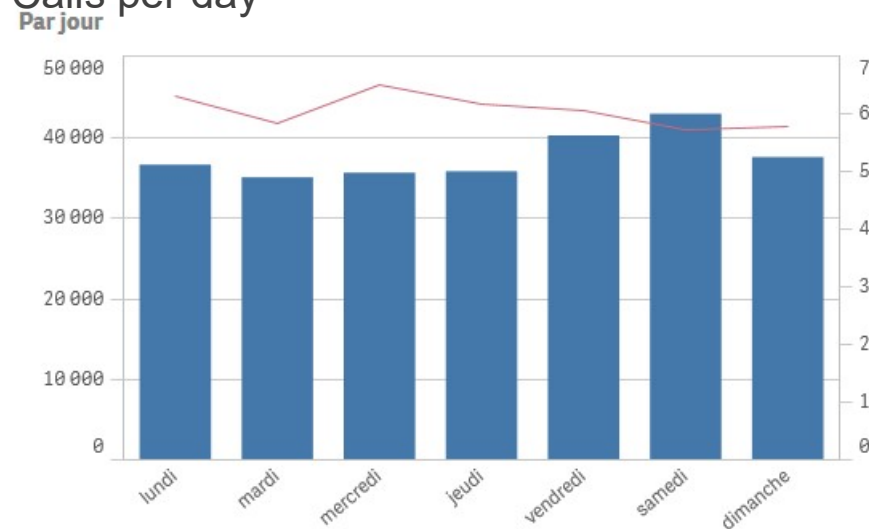
Calls per hour:



Calls per month:



Calls per day





- PSAP – International Contact Point
 - SELCA – Cattenom
-
- 476 Incident detection systems connected to 112
 - 300 intervention plans



European Civil Protection



World Health
Organization



➤ 3. National intervention and training centre

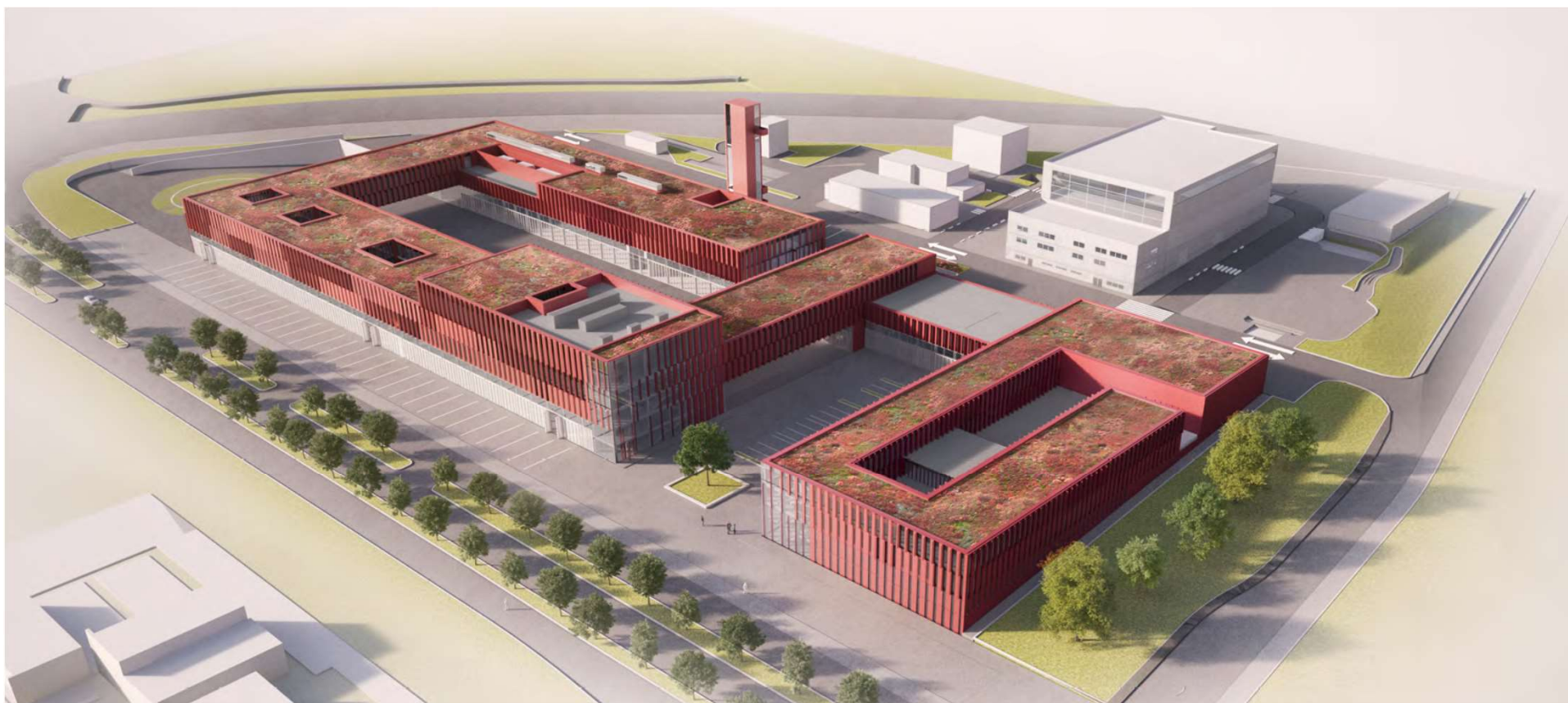
National intervention & training centre



LE GOUVERNEMENT
DU GRAND-DUCHÉ DE LUXEMBOURG

CNIS

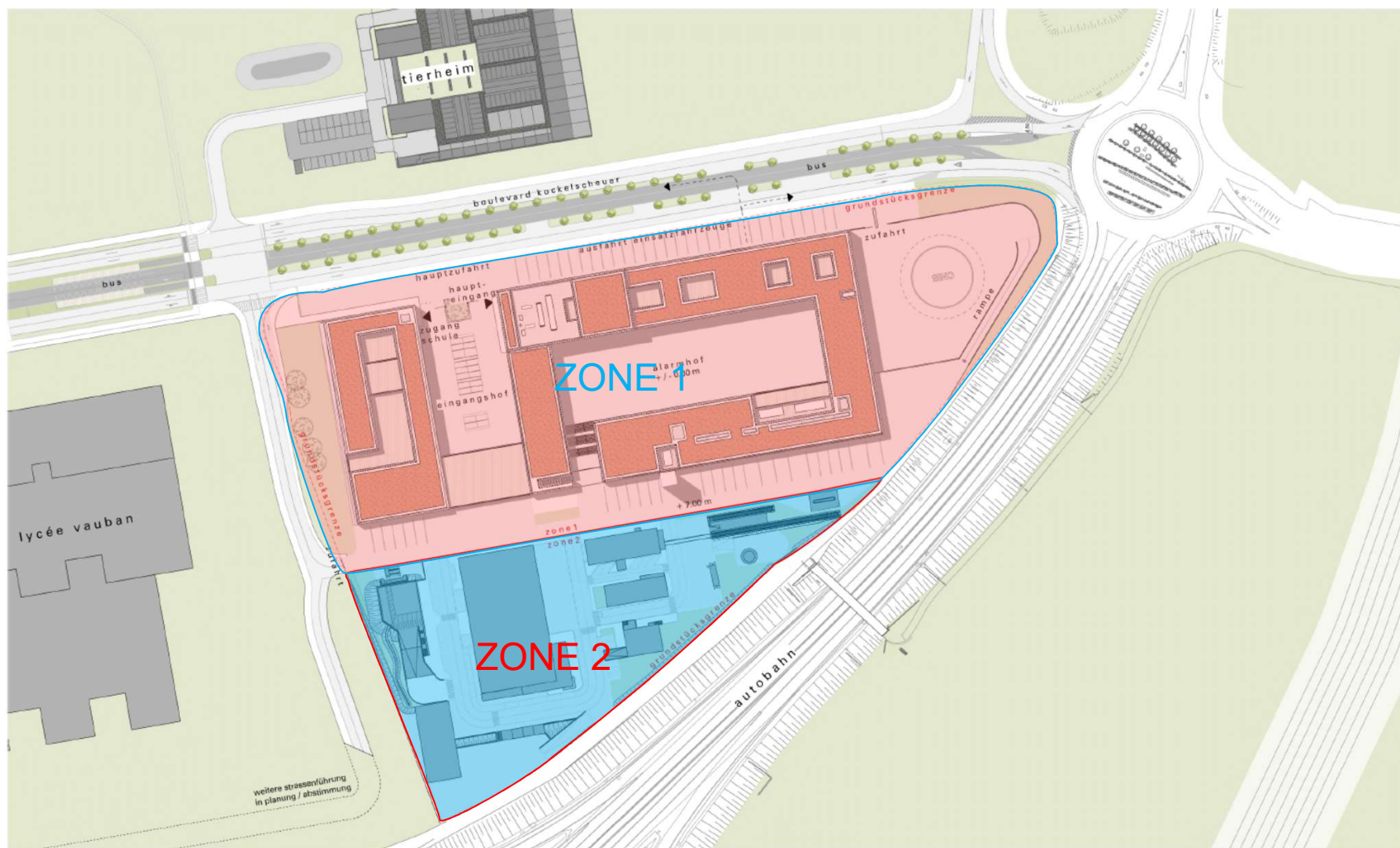
- Amount zone I : 121.665.987,62 €
- Amount zone II : 19.460.203,10 €
- Total amount: 141.126.190,72 €



Overview



LE GOUVERNEMENT
DU GRAND-DUCHÉ DE LUXEMBOURG



Zone 1



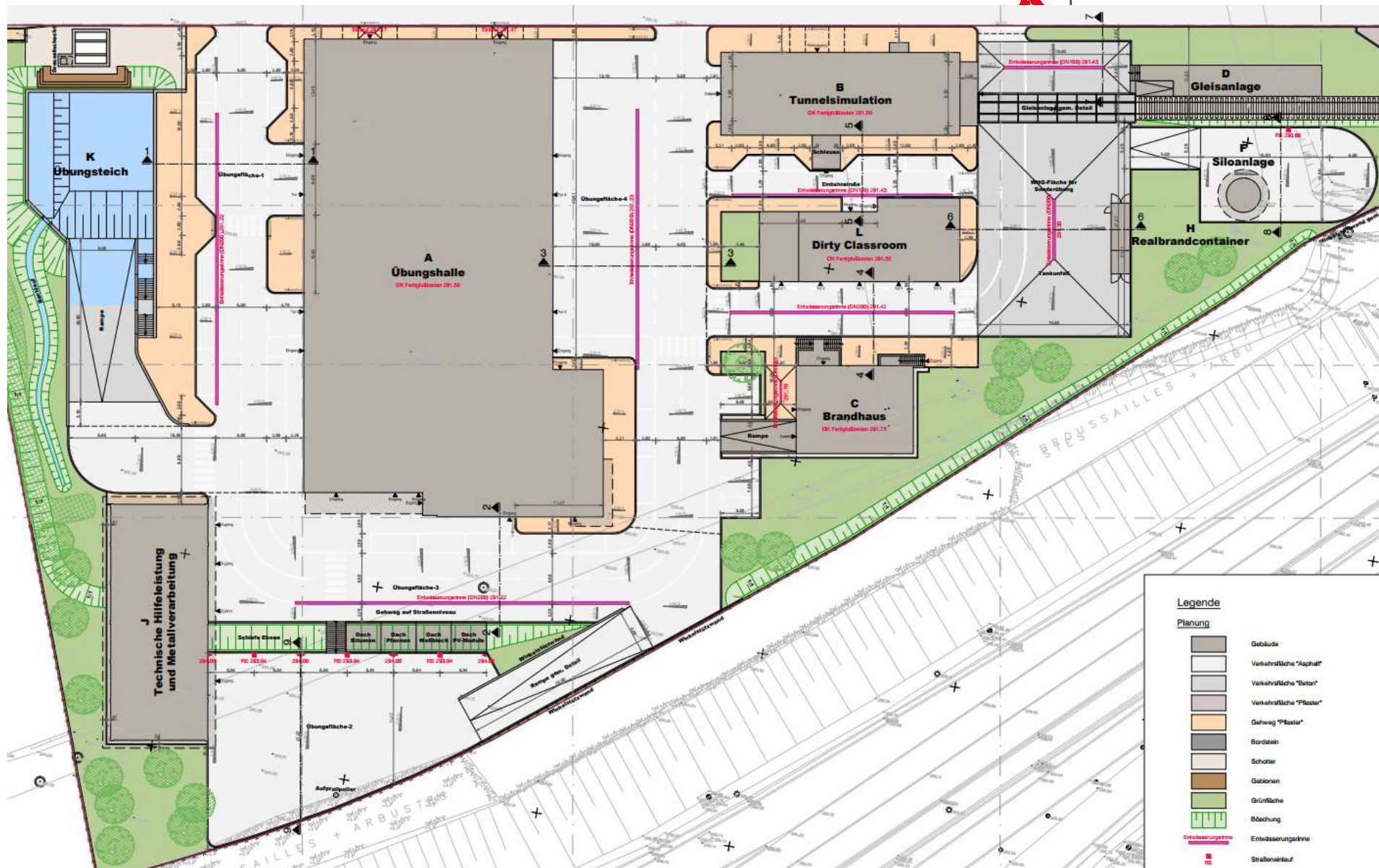
LE GOUVERNEMENT
DU GRAND-DUCHÉ DE LUXEMBOURG



Zone 2



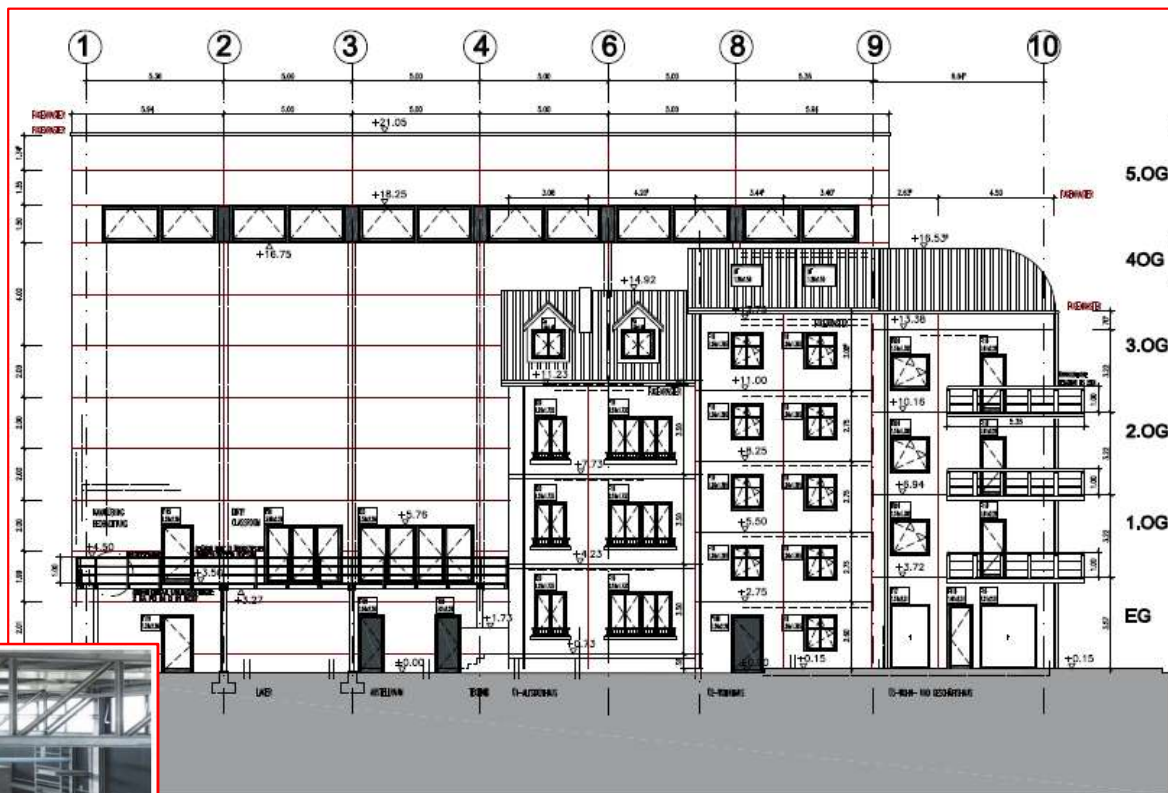
LE GOUVERNEMENT
DU GRAND-DUCHÉ DE LUXEMBOURG



Exercise hall



LE GOUVERNEMENT
DU GRAND-DUCHÉ DE LUXEMBOURG



Exercise hall



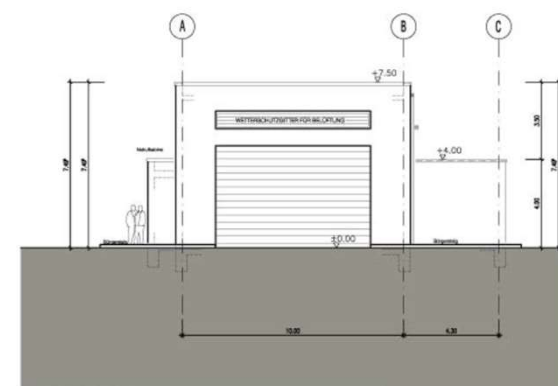
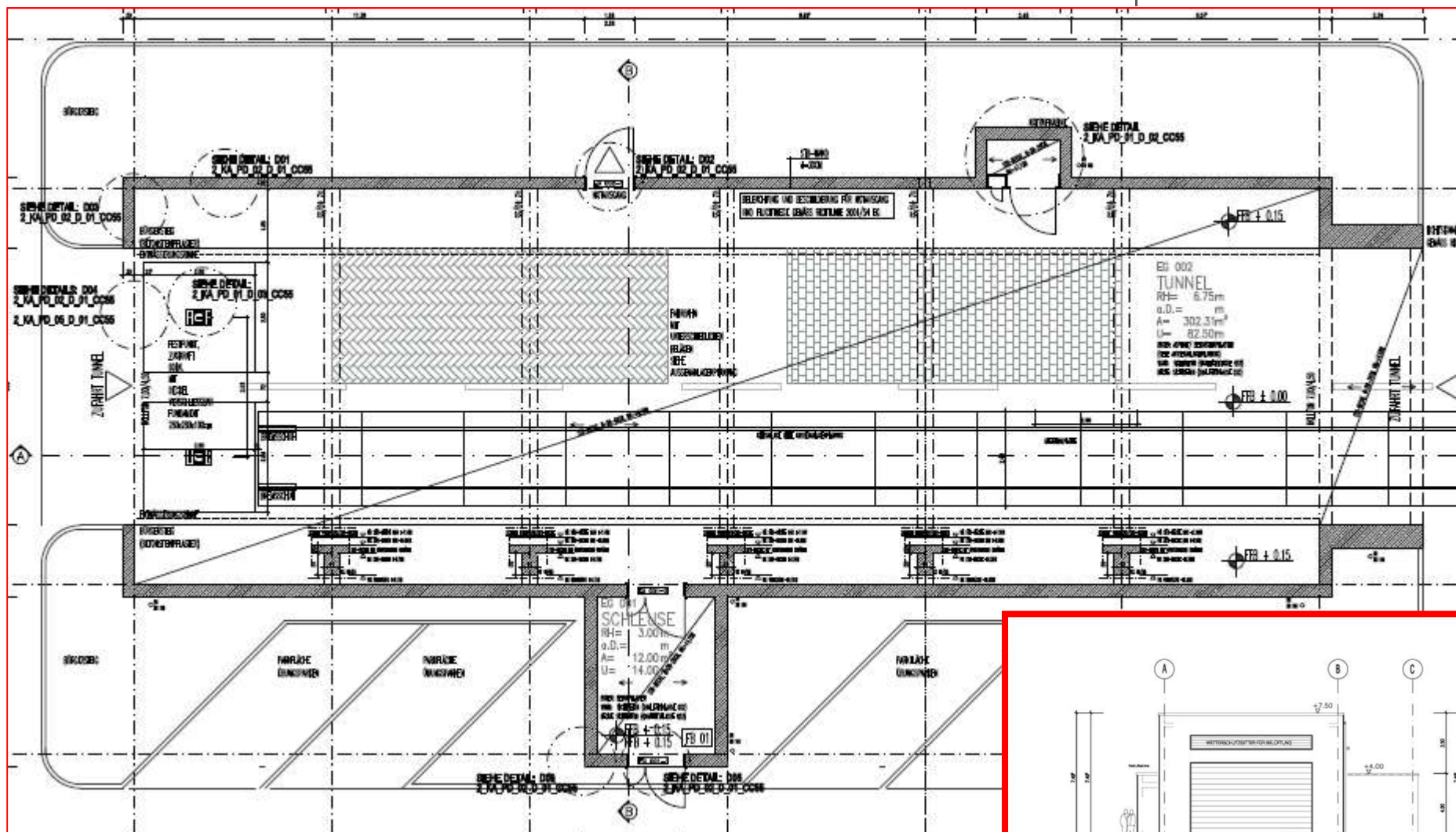
LE GOUVERNEMENT
DU GRAND-DUCHÉ DE LUXEMBOURG



Tunnel simulation



LE GOUVERNEMENT
DU GRAND-DUCHÉ DE LUXEMBOURG

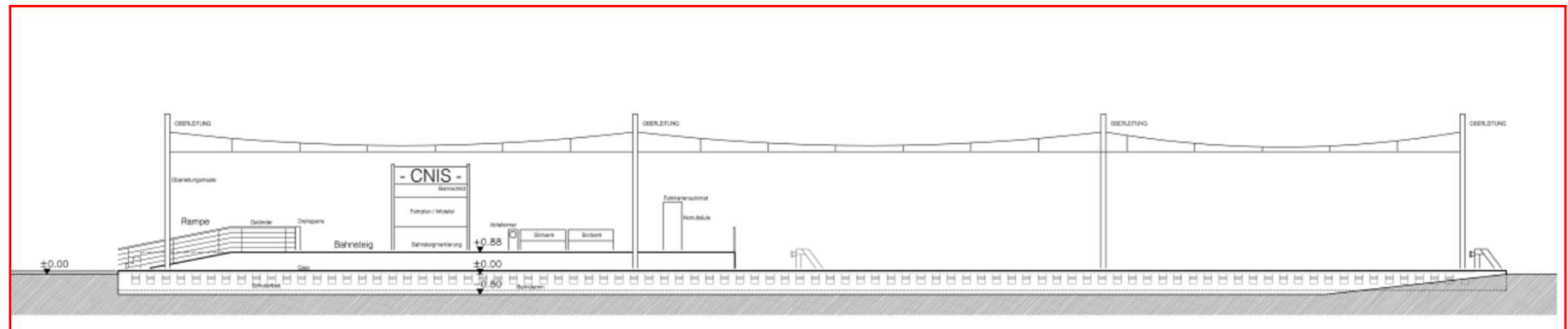
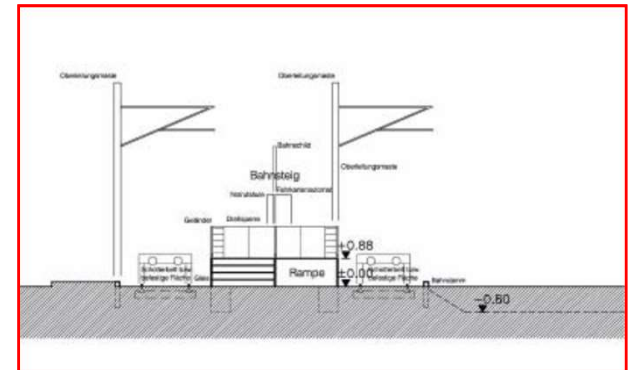
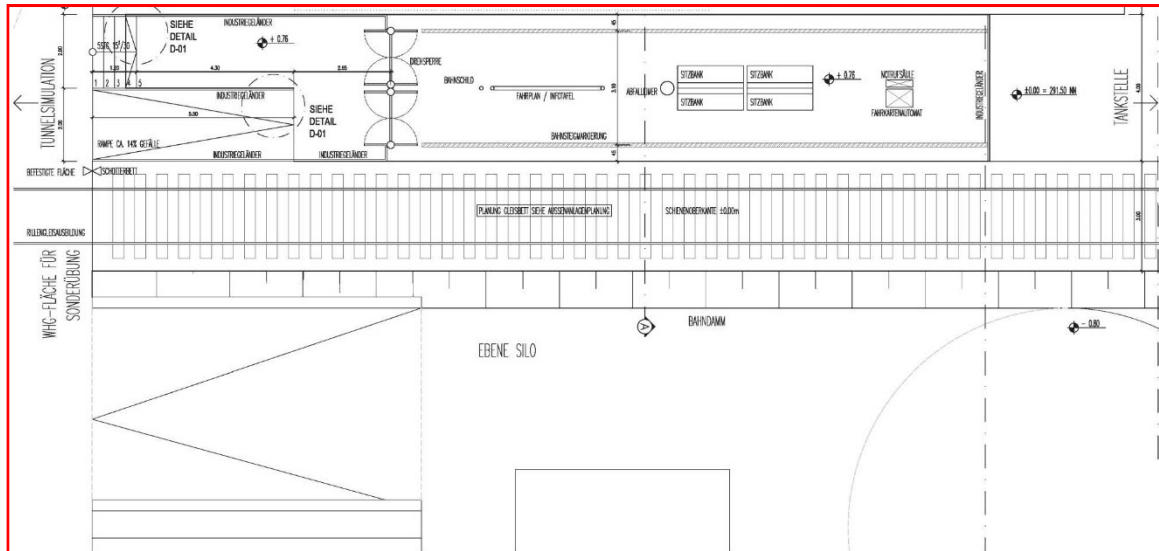


ANSICHT WEST

Train simulation



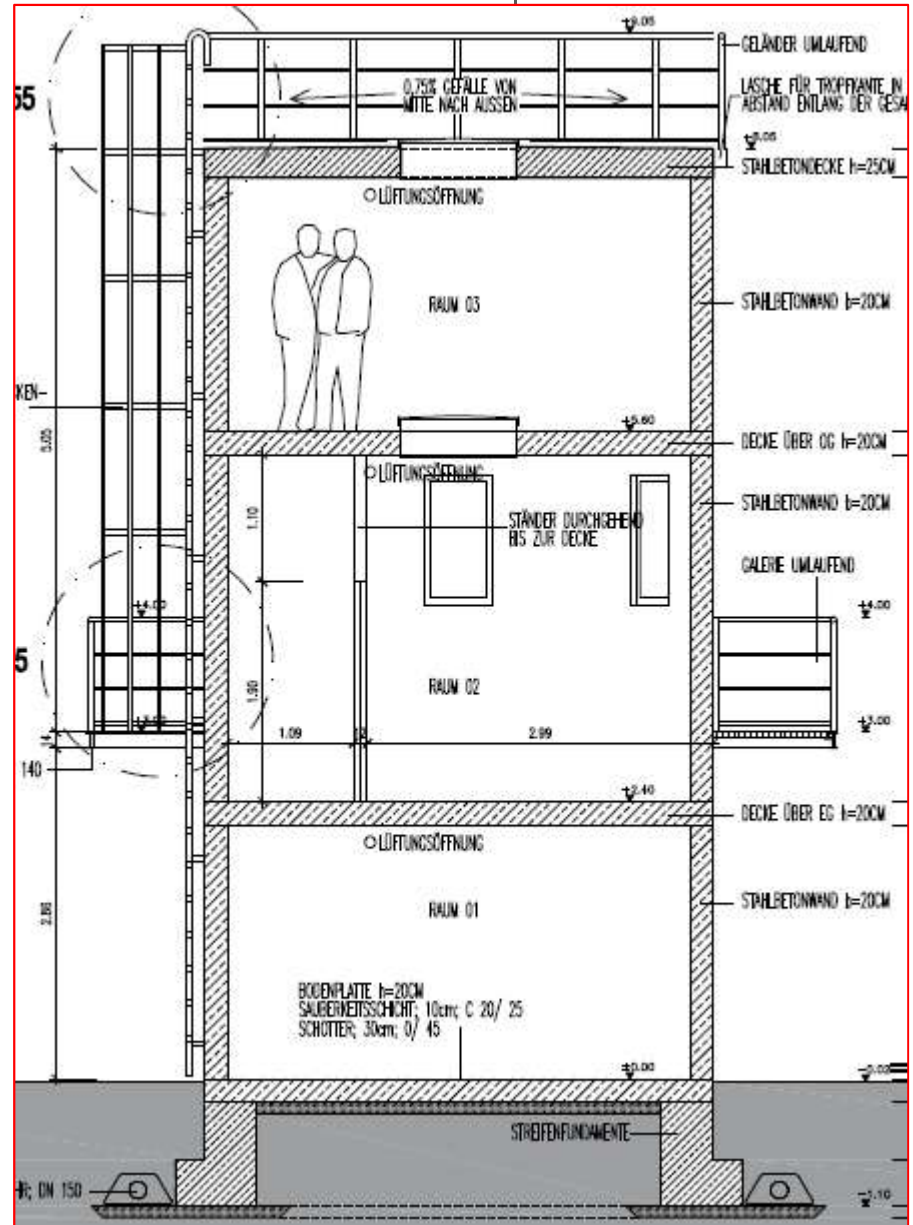
LE GOUVERNEMENT
DU GRAND-DUCHÉ DE LUXEMBOURG



Silo installation



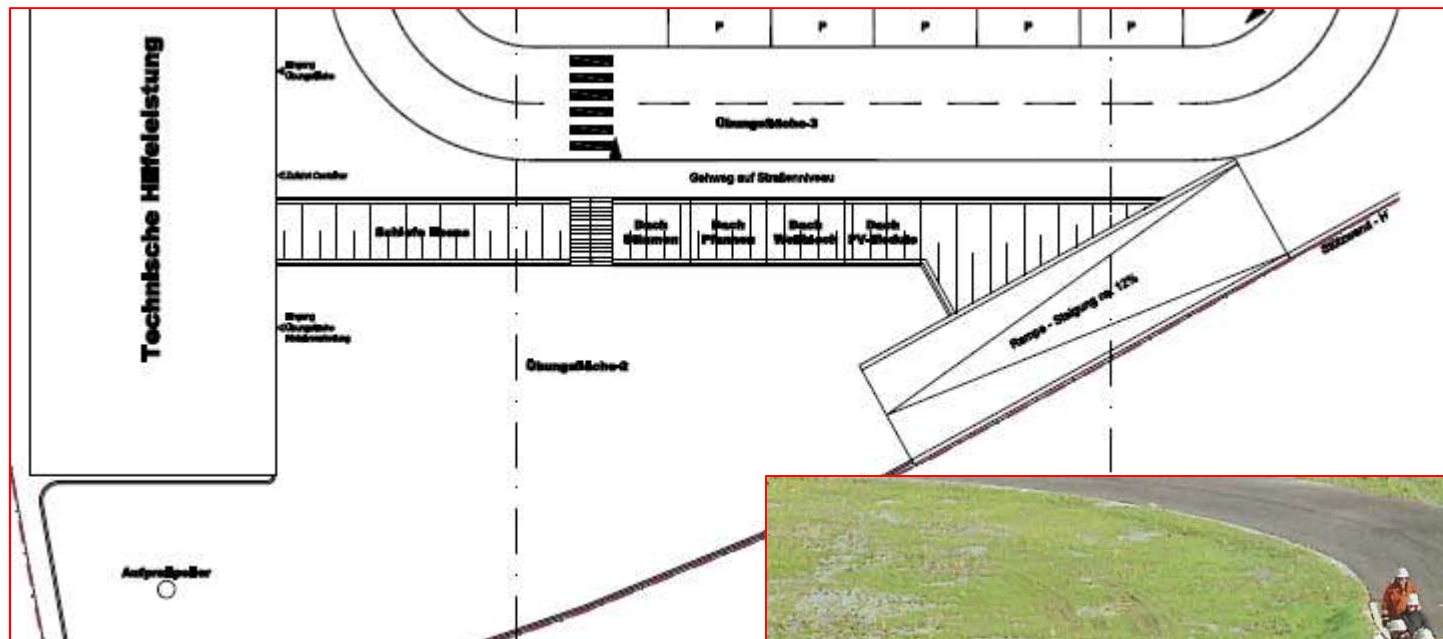
LE GOUVERNEMENT
DU GRAND-DUCHÉ DE LUXEMBOURG



Ramp



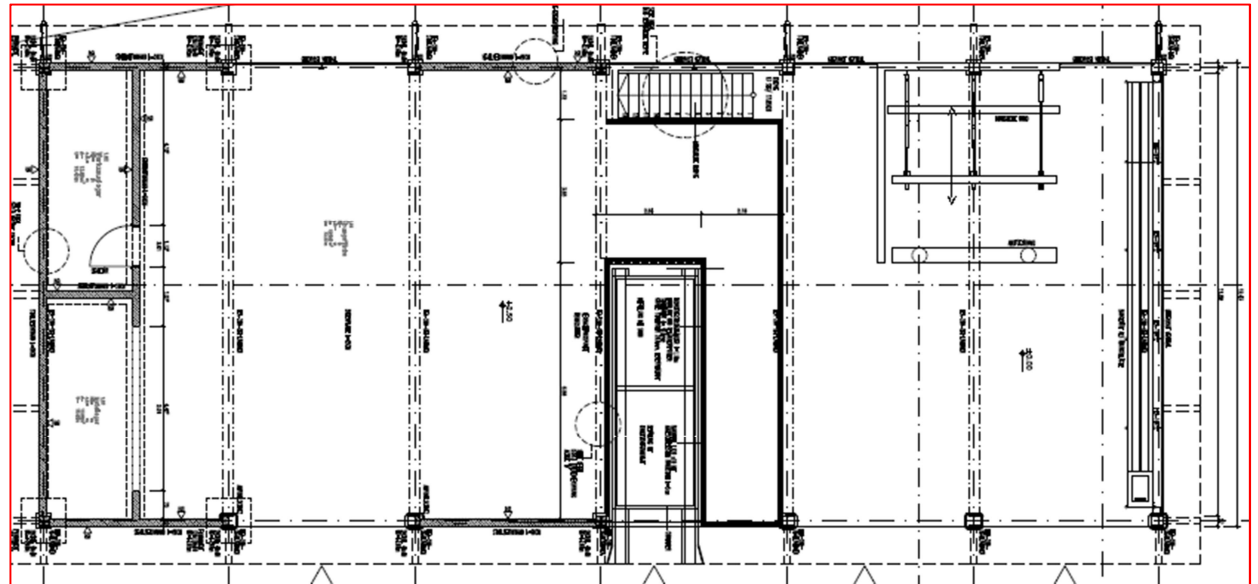
LE GOUVERNEMENT
DU GRAND-DUCHÉ DE LUXEMBOURG



Exercise place with a roof



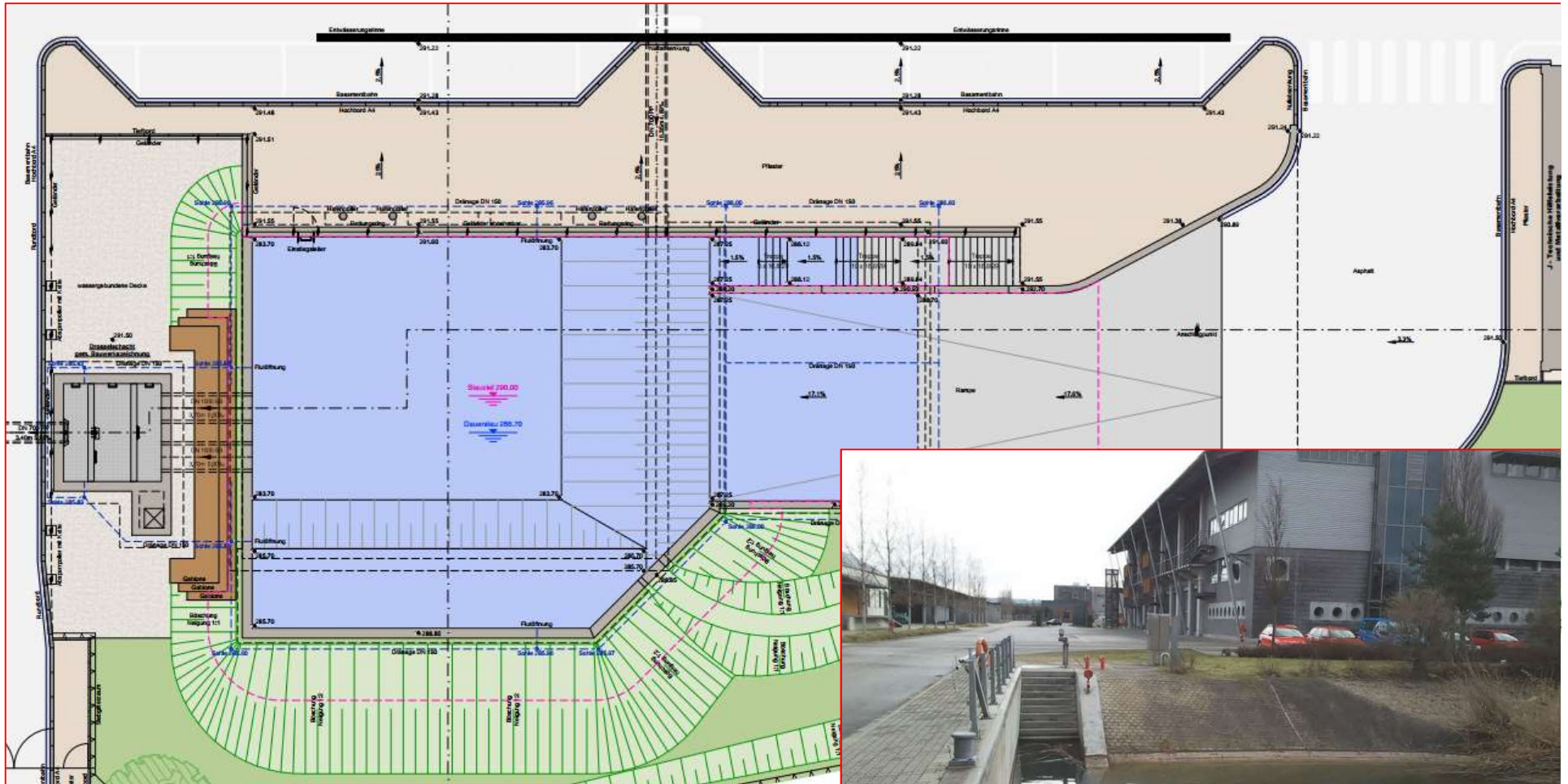
LE GOUVERNEMENT
DU GRAND-DUCHÉ DE LUXEMBOURG



Exercise place with a little lake



LE GOUVERNEMENT
DU GRAND-DUCHÉ DE LUXEMBOURG





Thank you for your attention