



European Transport Safety Council



REVIVE: Good Practice in Emergency Intervention in the EU

Antonio Avenoso,
Executive Director, ETSC
20th March 2019, Bucharest

The 5 pillars of road safety

1. Road safety management
2. Infrastructure
3. Safe vehicles
4. Road user behaviour
5. Post collision care





IMPROVING POST-COLLISION RESPONSE AND EMERGENCY CARE IN EUROPE

The REVIVE Project

- Launched in 2016
- Supported by **TOYOTA**



Scope of the project

- The REVIVE Project is focused on the **emergency/rescue chain**: from the moment a road collision occurs until the injured person is transferred to a medical facility;
- Objective: **Improvements** in emergency response that can help prevent deaths and **life-changing injuries in road collisions**;
- The emergency response is not getting a fair share of attention in terms of research, good practice exchange and measures.
- Improvements are being made, but collisions still occur

Main deliverables

- **5 country round tables** in 5 regions of Europe covering the EU28;
- **5 case studies** outlining best practice examples in post collision care;
- **A Synthesis Report** for experts and policy makers;
- **Advocacy work** in advising national and EU decision makers on post collision care;
- **A video reportage** explaining the importance of efficient post-collision care when saving lives;
- **A final international conference** in Brussels in 2019.

**18th
June**

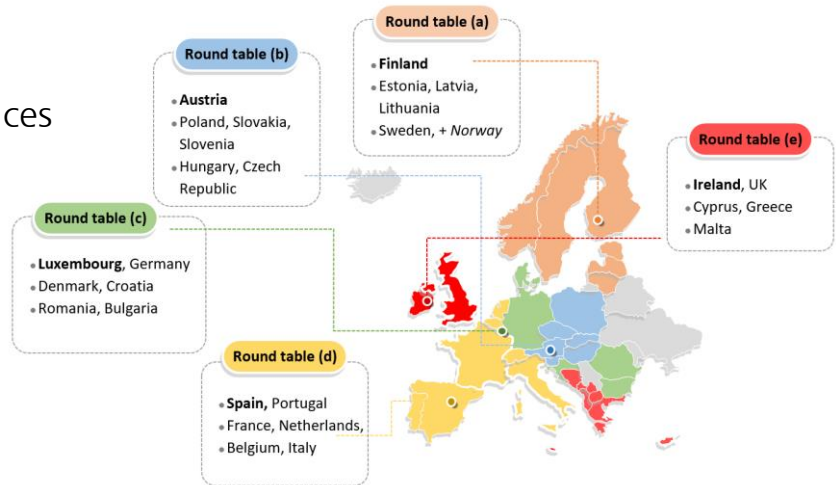
Round table discussions

- Representatives from

- Road Safety
- Emergency Medical Services
- Fire and Rescue services

- Discussions focus on:

- What works well
- What doesn't work well
- Emerging and interesting methods/practices
- National and international initiatives



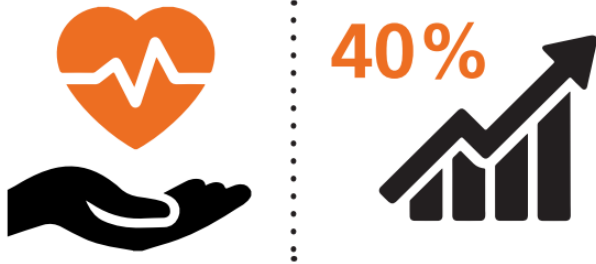
ETSC REVIVE Advocacy

- **Valletta Declaration** adopted in March by informal ministerial meeting and formally approved in June 2017 by the Council.
- Setting a target to **half serious road traffic injuries between 2020-2030** based on 2020 figures.
- In the declaration, the ministers promise to ensure deployment of eCall and reduce response time.

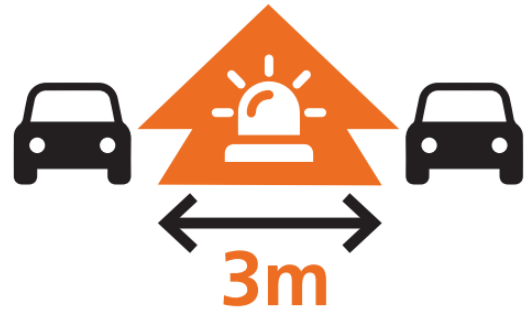
How can you get engaged

- **Monitor good practices and challenges** in post-collision response and let us know.
- **Share your position/** recommendations/ events/ training opportunities on post-collision response.
- **Tell us** about changes in your national legislation, new studies, **research** etc.
- For more details please contact ETSC REVIVE Project Officer **Laurence Atchison** la@etsc.eu
- Updates can be found at www.etsc.eu/revive

- FACTFILE - EMERGENCY CORRIDOR

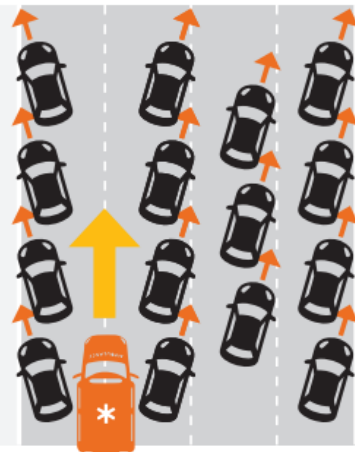


**MAKES POST-COLLISION
RESPONSE FASTER AND
CAN INCREASE THE
CHANCE OF SURVIVAL BY
UP TO 40 %**

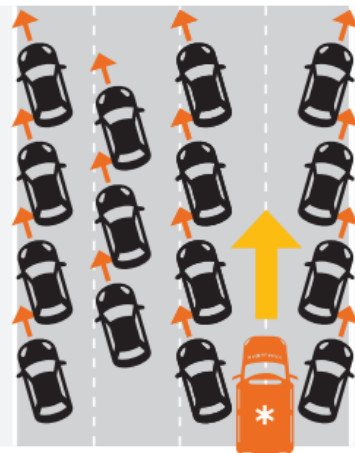
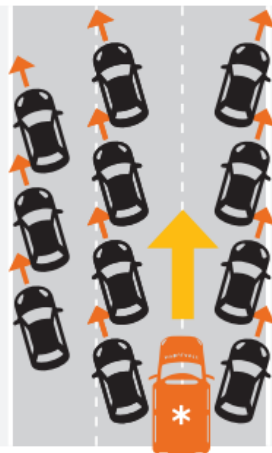


**HAS TO BE AT LEAST 3
METRES WIDE TO MAKE IT
POSSIBLE FOR EMERGENCY
VEHICLES TO PASS,
ESPECIALLY AMBULANCE
AND FIRE ENGINES**

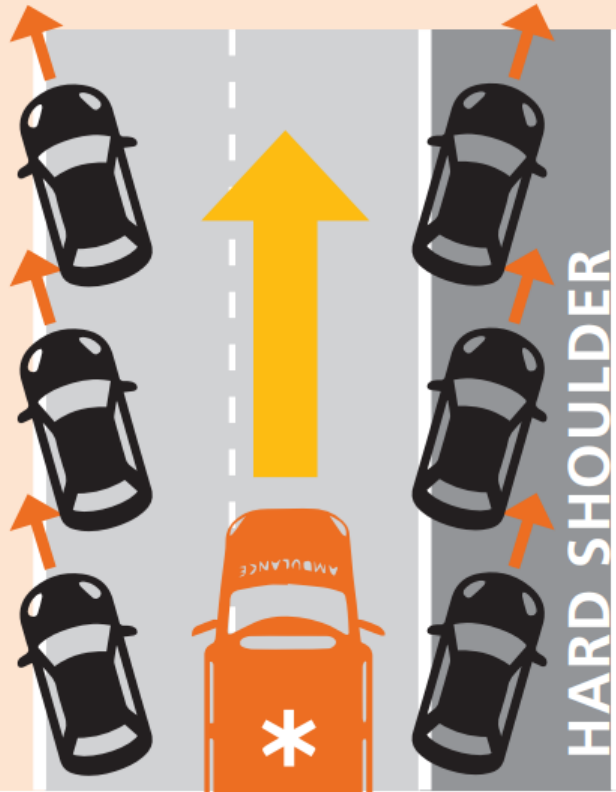
AUSTRIA, GERMANY, HUNGARY, LUXEMBOURG, SLOVENIA, SWITZERLAND



CZECH REPUBLIC

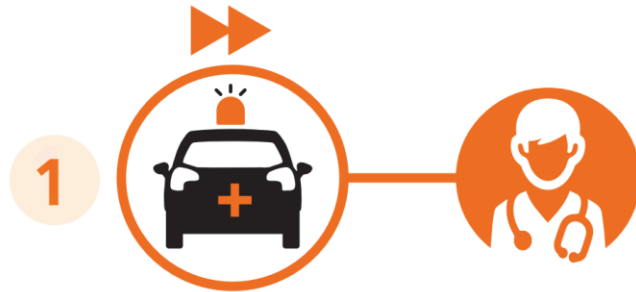


It is a common misconception that a hard shoulder exists in order to allow emergency vehicles to pass.



- FACTFILE -

RENDEZ-VOUS (RV) SYSTEM



- An emergency doctor arrives at the collision in a rapid response vehicle



- An ambulance arrives separately with medical personnel and stretchers

Different situations, different combinations

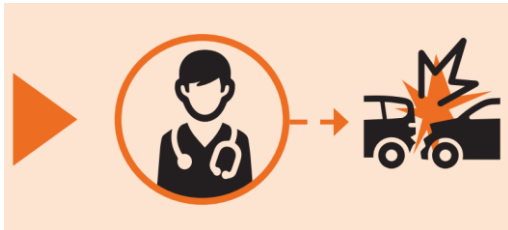
- Collision with minor injuries



- Minor injury that deteriorates



- No or light injury



- Serious injury



Benefits of the RV system



Ambulance crews
and emergency
doctors work
independently

Smaller numbers
can deal with many
incidents



Time is saved due to
fewer return trips to
the hospital

Doctors can focus
on collision where
they are needed
most



By using a smaller
vehicle, the
emergency doctor is
highly mobile

This helps lead to
shorter arrival times



European Transport Safety Council



**THANK YOU FOR
YOUR ATTENTION**

For more information on the project:



www.etsc.eu/revive



[@etsc_eu](https://twitter.com/etsc_eu)



aa@etsc.eu