

INFRASTRUCTURE AND ROAD SAFETY

Growing the economy
and saving lives



Asociația
Pro Infrastructură

Ionuț Ciurea
Vice-President & Executive Director

MONITORING
THE MAIN TRANSPORT
INFRASTRUCTURE
PROJECTS IN ROMANIA

5+ years of monitoring
almost 100 aerial footage sessions
hundreds of photo reports
more than 2 million YouTube views



The most active
community of its
type in Romania

PEUNDEMERG.RO
FORUM
founded in September 2011
more than 2000 members
followed by all stakeholders



A3 in Bucharest (Aktor)
Railway overpass



A1 Lugoj-Deva lot 3 (Comsa)
Ecoduct and service area





A1 Lugoj-Deva lot 4 (UMB)
Finished ecoduct

FOUR MAIN TOPICS IN THIS PRESENTATION

DN68A road safety and traffic problems

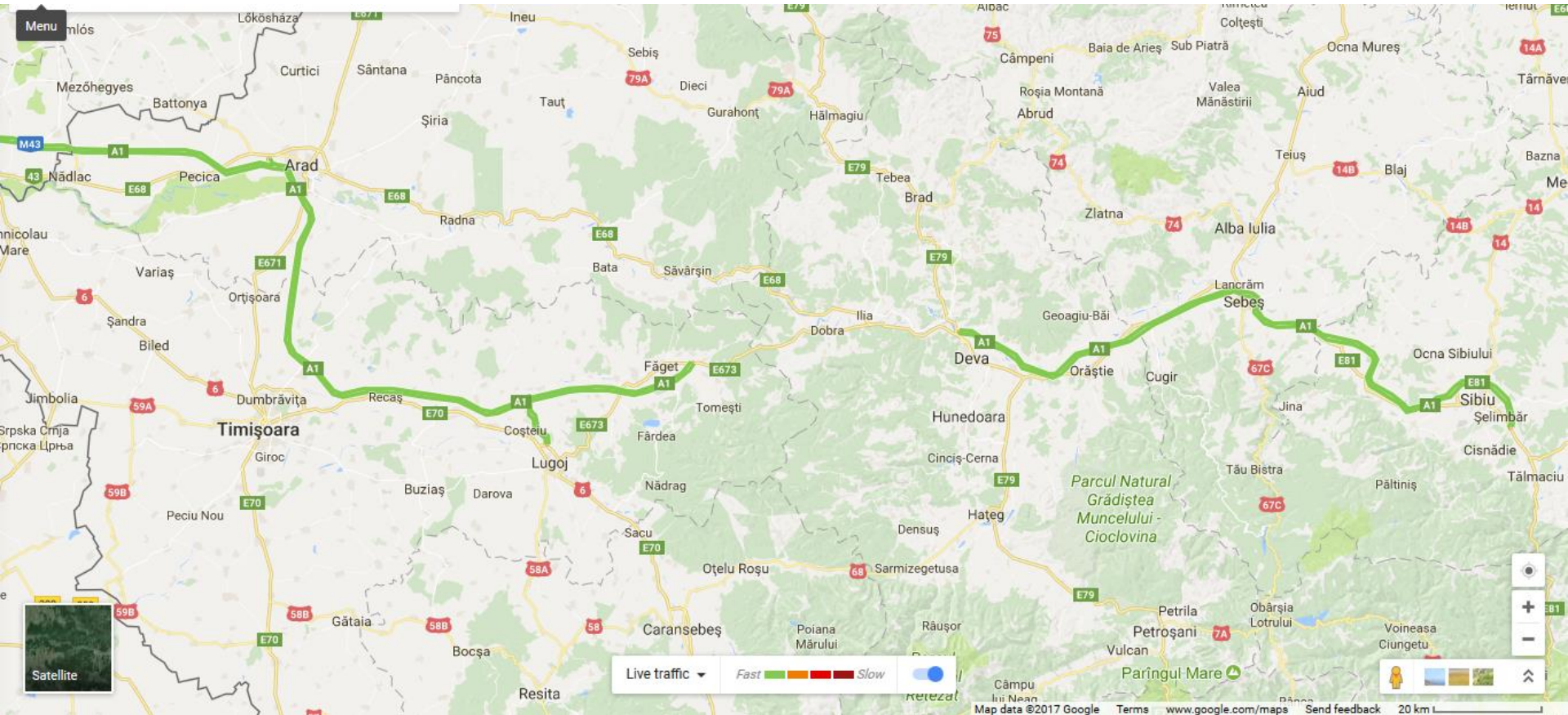
Designing and upgrading roads

Maintenance issues

Motorway behavior

DN68A ROAD SAFETY AND TRAFFIC PROBLEMS

Putting a lot of pressure on a road
which wasn't designed to handle
motorway traffic



Menu

Satellite

Live traffic Fast Slow



Search Google Maps



Cosești

Holdea

Nemeșești

Coșevita

Baștea

Sintești

Zorani

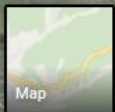
Margina

Homojdia

Coșava

Breazova

Pietroasa



Map

Live traffic

Fast Slow



Curtea

Imagery ©2017 CNES / Airbus, DigitalGlobe, Map data ©2017 Google

Terms www.google.com/maps

Send feedback

1 km



3D









DN68A ROAD SAFETY AND TRAFFIC PROBLEMS

Embankment reinforcing in a few places

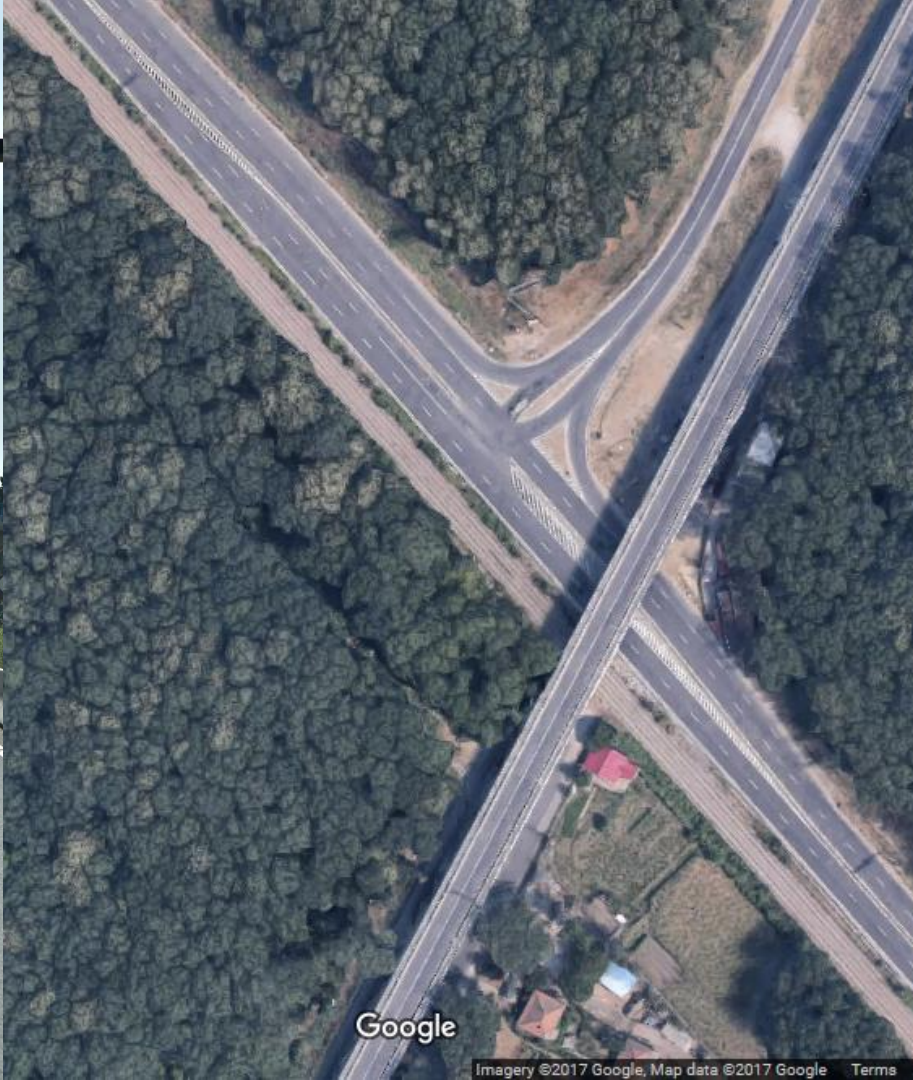
New asphalt and road surface marking (all 14 km)

New guard rails, especially in hazardous areas

Road sign project to inform & temper drivers

DESIGNING AND UPGRADING ROADS

Poorly designed crossroads and interchanges
that create “black spots”



DESIGNING AND UPGRADING ROADS

Design interchanges, not X-shape crossroads

Upgrade existing crossroads to interchanges

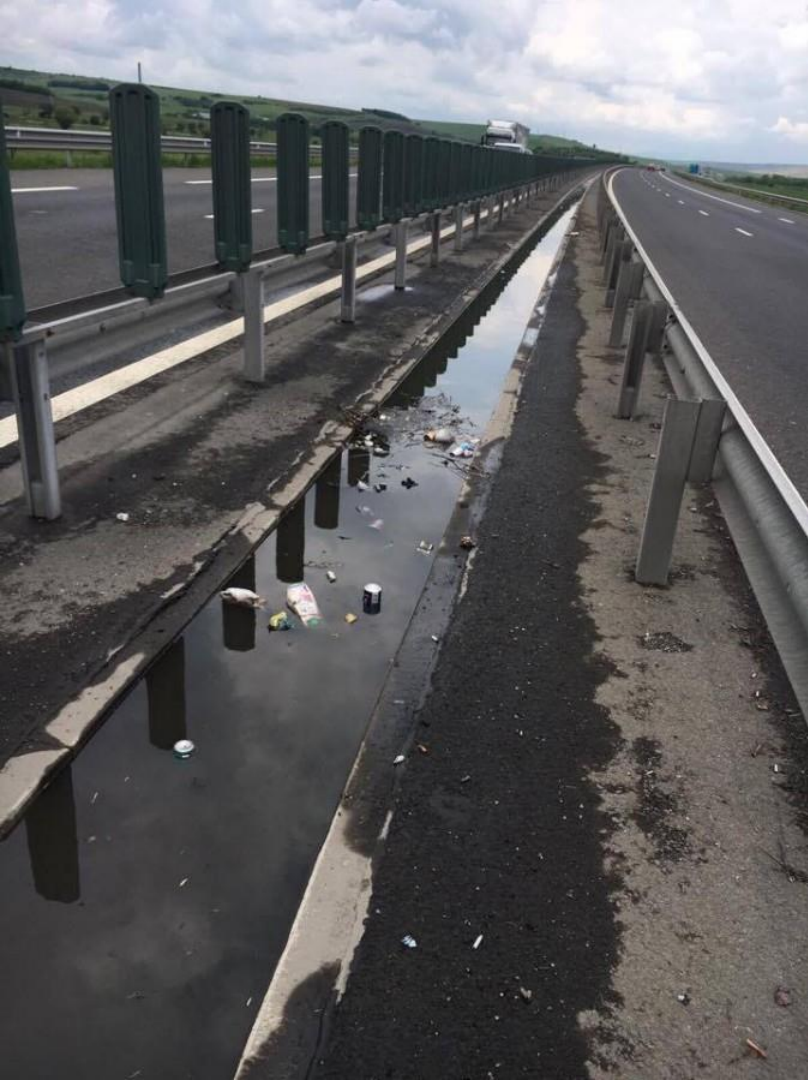
Road safety auditors should be selected by ARR

Road signs are not enough

MAINTENANCE ISSUES

Poorly funded road maintenance budgets lead to poor road surface quality, lack of clear road markings, damaged (or missing) guardrails, damaged (or missing) road signs, lack of (or missing) other road safety elements









ARMĂNII NU CHEARĂ

1918



BASARABIA E ROMÂNIA



MAINTENANCE ISSUES

Better funding

More teams, more/better equipment

Faster response times

Faster tenders (good documentation & evaluation)

Longer warranty period

MOTORWAY BEHAVIOR

Maintenance and emergency response teams

Traffic police

Drivers





A1 Nádlač Oráštie
P WC
200m



80

HEADLINE
MAGNAN ↑
SARA ↑
SIBOG ↑

80



3011 Bencsolt Bóna
via Margina Fágel

UTILAJE DE
DEZAPEZIRE IN
ACTIUNE!





ATENTIE LUCRARI
KM 262 - KM 263
!

MOTORWAY BEHAVIOR – MAINTENANCE TEAMS

Use electronic traffic signs

At least a few hundred meters for pre-signaling

Proper training and safety equipment for workers

Modern equipment

Implementing ITS (software, connections)



MOTORWAY BEHAVIOR – TRAFFIC POLICE

Changing/updating laws for radar usage

Fixed position or moving radars

Sending the fine directly to the driver's home

Careful signaling in case of emergency/accident





MOTORWAY BEHAVIOR – DRIVERS

Keeping a safe distance and adapting speed
depending on road, traffic and weather conditions

Aggressive driving (tailgating)

Stopping on the emergency lane

Entering (or exiting) the motorway aggressively

Switching lanes

Using the emergency lane in case of accident

Driving slow on the emergency lane

E D U C A T I O N

Responsibility