

YOUNG EUROPEANS ACTING FOR ROAD SAFETY



WIELICZKA

Dangerous pedestrian crossing



inż. Magdalena Depta

inż. Marta Mączka

Cracow University of Technology



CONTENTS

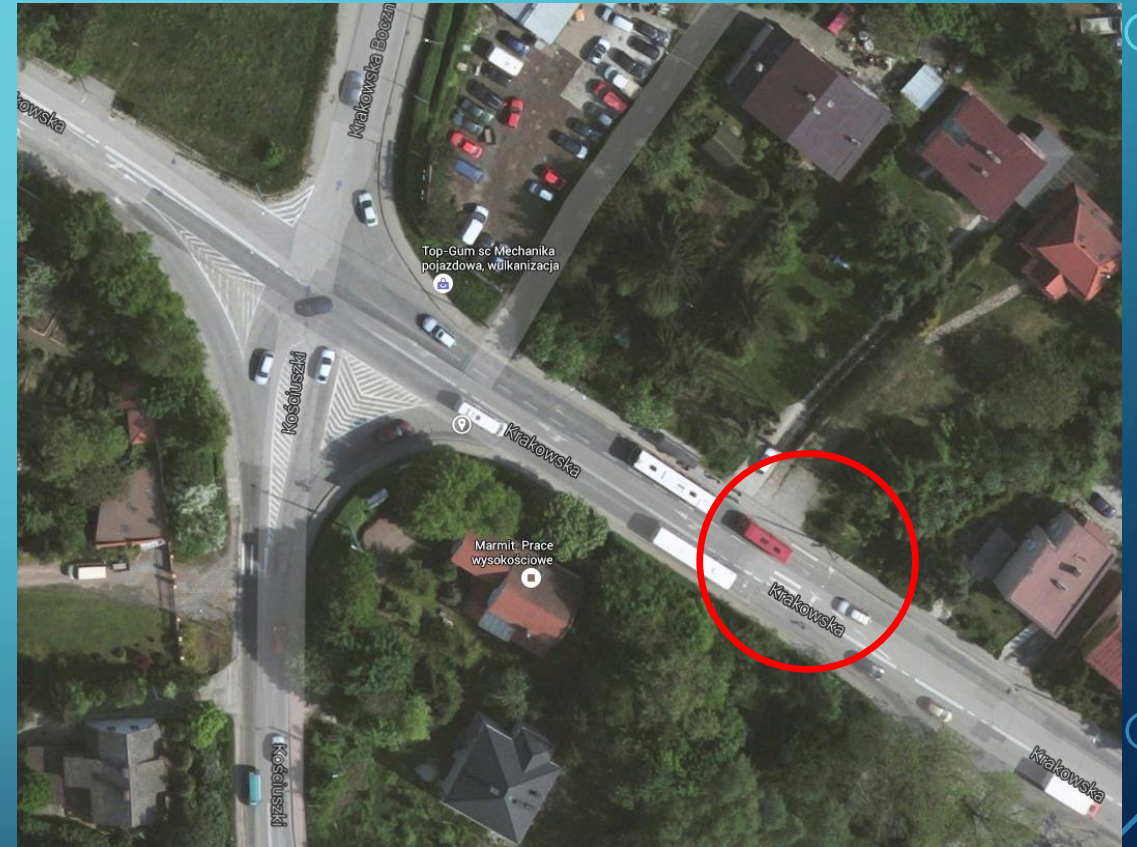
- Introduction
- Target
- 1st proposed solution
- 2nd proposed solution
- Strategy
- Possible difficulties

INTRODUCTION

Crossroad is located on a road leading out of town (towards Cracow). Area is strongly urbanized (houses, services undertaking).

Krakowska Street has 3 lanes.

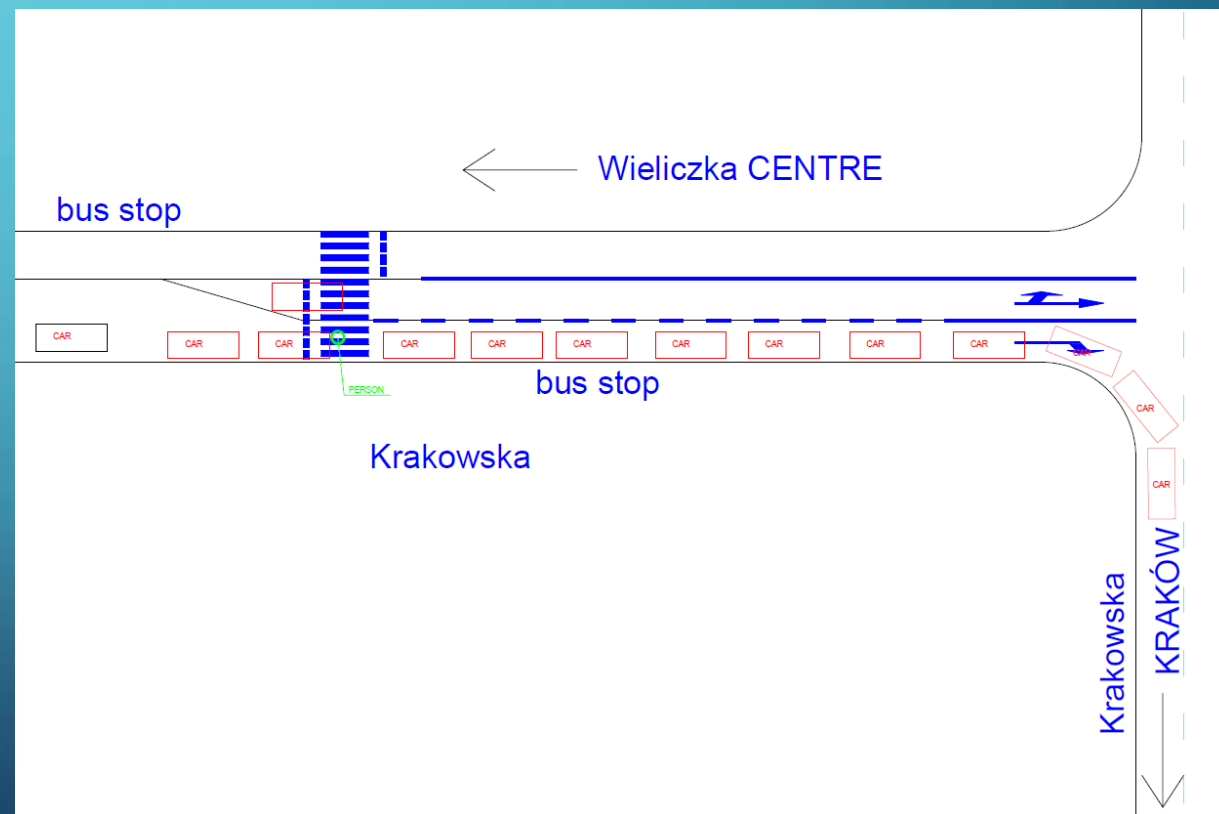
There is a bus stop and, next to it, a walkway.



In the morning peak hour there is traffic congestion on the right line turn (towards Cracow). The situation is worsened further by bus drivers stopping on the bus stop „Wieliczka CPN” as there is no dedicated bus turnout.



Some drivers wanting to overtake the bus or other cars standing on lane to turn right use the lane to go straight or turn left. This is dangerous for pedestrians who want to pass the road as they must do it behind the cars standing in traffic jam. Pedestrians may be run over by vehicles because of that.



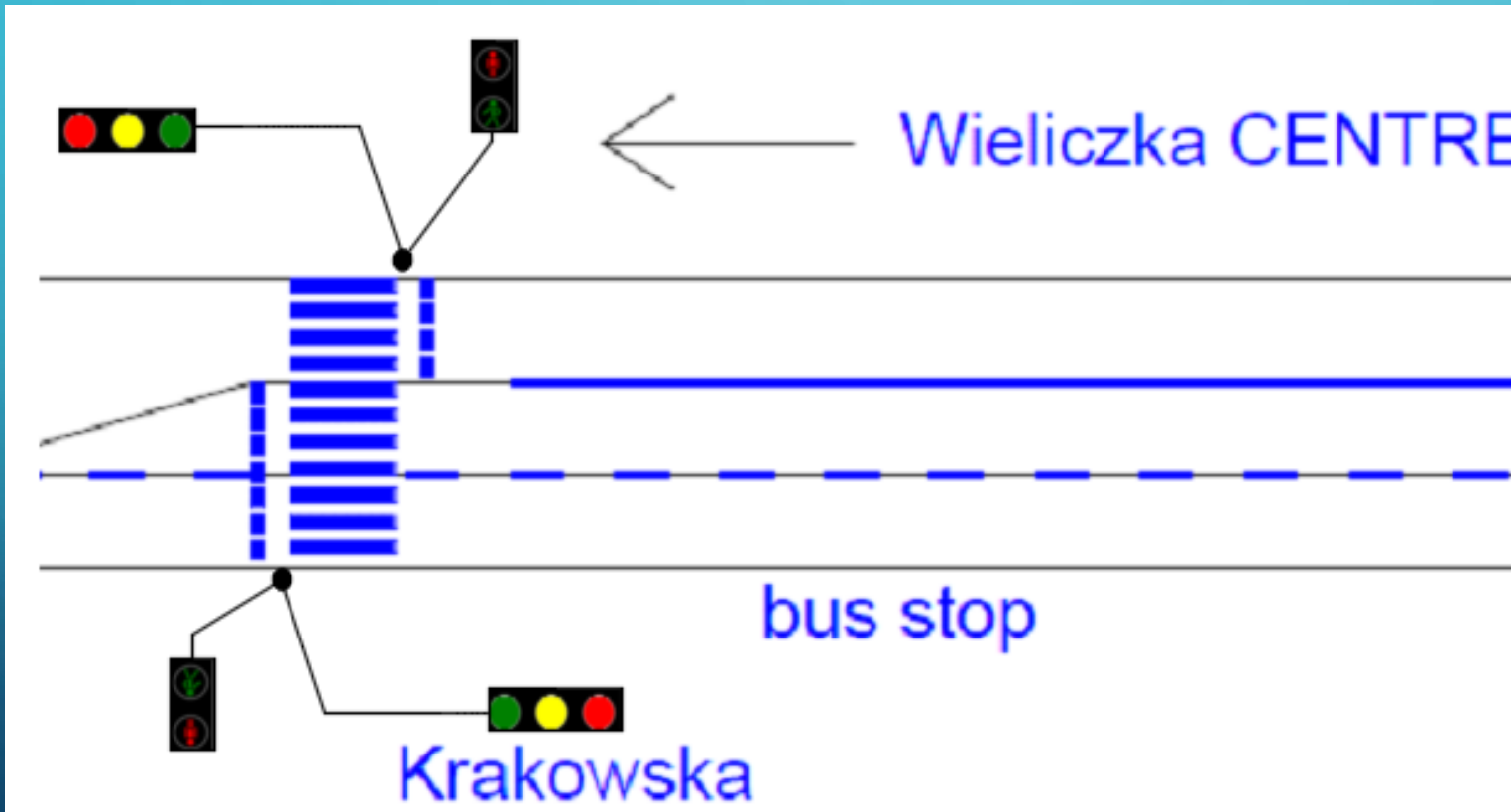
TARGET

- We want to show how dangerous are the pedestrian crossings when drivers can't see the pedestrians getting close to the zebra.
- We want present a solution for this problem based on the pedestrian crossing in Wieliczka.



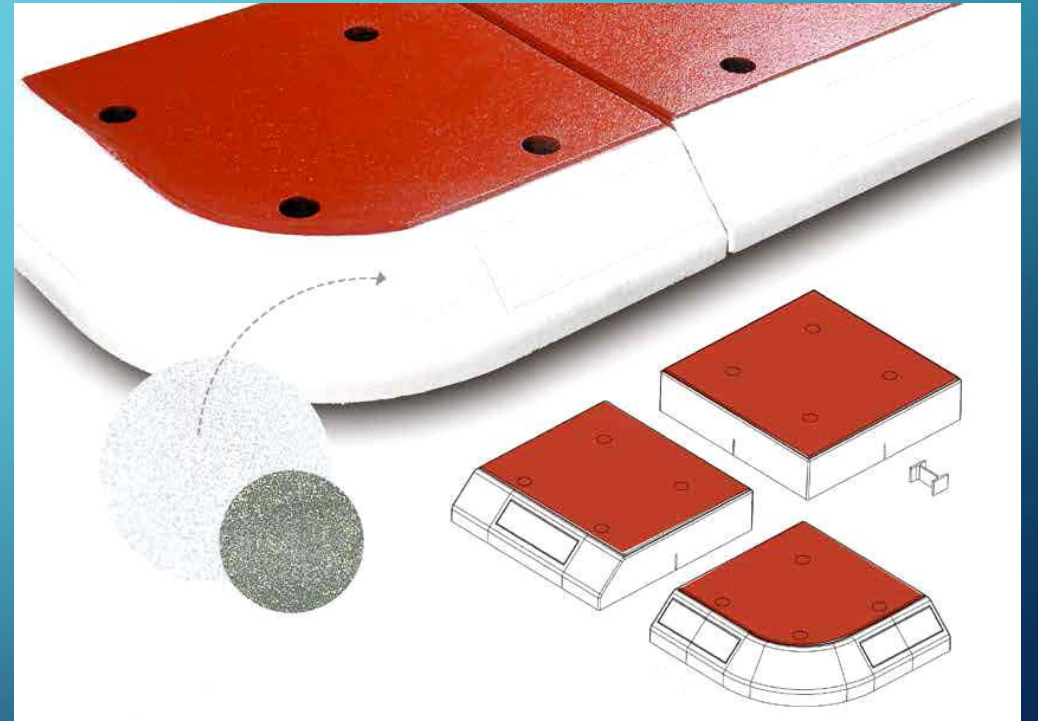
PROPOSED SOLUTION 1ST

First proposal is to install the traffic lights.

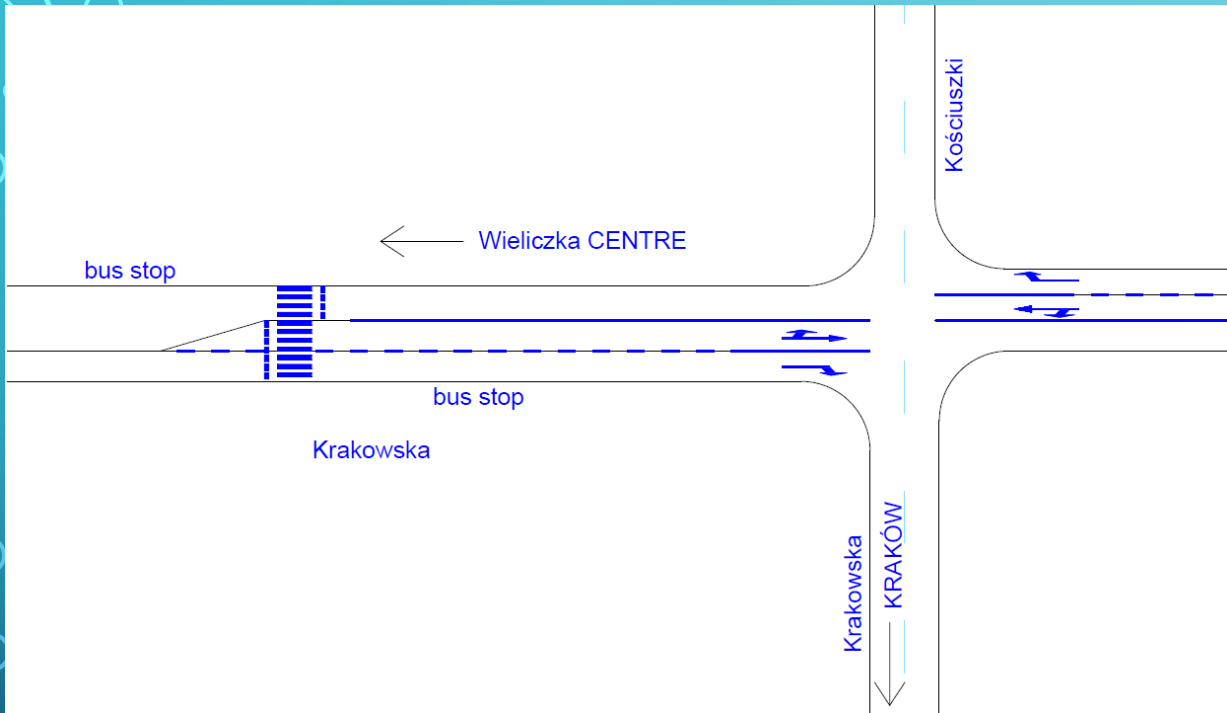


PROPOSED SOLUTION 2ND

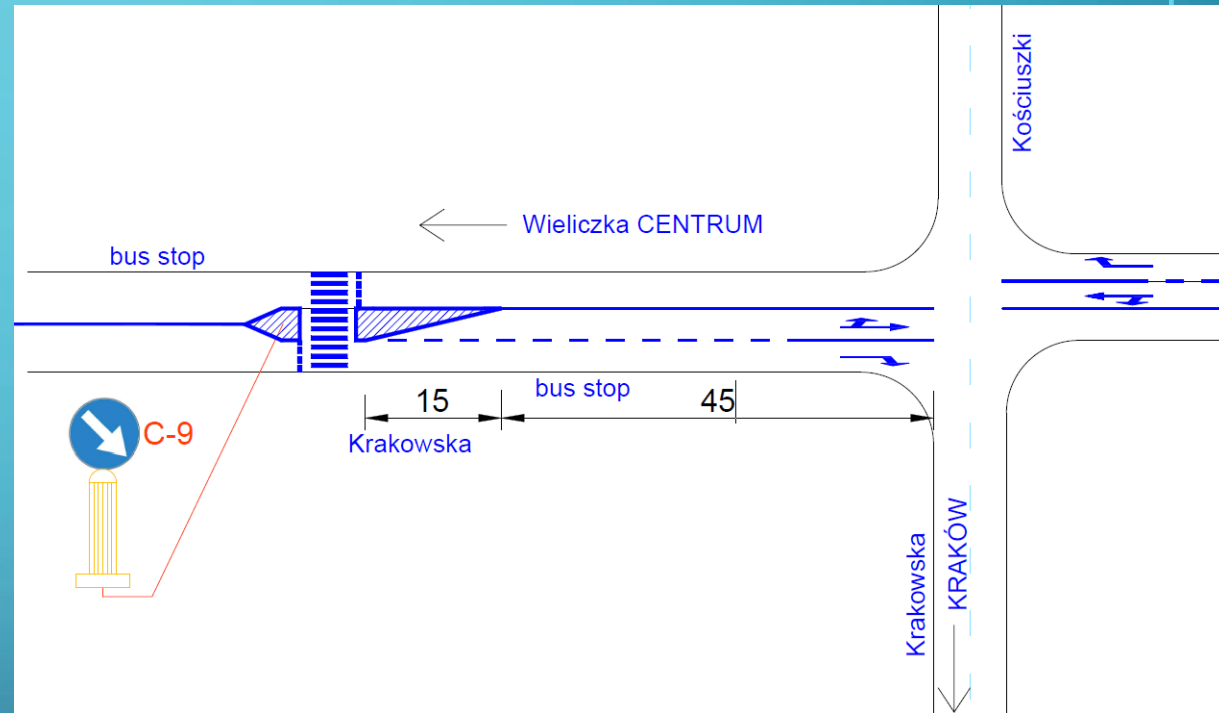
Our second proposition for improving the safety of the pedestrians is to build refuge island in this place.



PROPOSED SOLUTION 2ND



Current state



Proposed design

ADVANTAGES OF THE PROPOSED SOLUTION

- The island shortens lane which goes straight and lane to turn left - no pedestrians who go from behind cars
- Constricts lane (optically) – cars slow down
- The island will make overtaking impossible
- Pedestrians will focus on only one direction when crossing the road



STRATEGY

Contact with the Cracow University of Technology	November - December 2016
Contact with road administration	Up to March 2017
Estimate cost of both solutions	Up to January 2017
Attempt to find a partner	January – March 2017
Conduct a questionnaire	Up to April 2017
Prepare a final report	End of 2017

POSSIBLE DIFFICULTIES

- Maintaining good relations with local authorities
- Finding a partner
- Non obligatory questionnaire - insufficient results number



The top corners of the slide feature decorative circuit-like patterns. On the left, several lines with circular nodes extend downwards from the top edge. On the right, a few lines with circular nodes extend upwards from the top edge. The background is a gradient from light blue at the top to dark blue at the bottom.

THANKS FOR YOUR ATTENTION !

Nous vous remercions De votre attention!

The bottom corners of the slide feature decorative circuit-like patterns. On the left, several lines with circular nodes extend upwards from the bottom edge. On the right, a few lines with circular nodes extend downwards from the bottom edge.

Danke für Ihre Aufmerksamkeit!